



**INDUSTRY
LEADING FIRETUBE
PERFORMANCE**

Firetube performance, perfected.

SVF™ | STAINLESS
VERTICAL
FIRETUBE

Industry-leading thermal efficiency up to 96.8%

Stainless steel firetube heat exchanger

Advanced *Unity™* control

Easy to install and service

Weil-McLain reliability

Firetube performance, perfected.

The latest in high efficiency stainless steel firetube technology couples with Weil-McLain industry-leading boiler design for installation ease and service delivered in one complete package. For boiler replacement or new construction, the SVF 1500-3000 stainless vertical firetube SVF satisfied even the most demanding bid specs and performance applications.

Industry-Leading Thermal Efficiency

Featuring an alternating opposed indentation design, the SVF firetube geometry optimizes heat transfer resulting in industry leading thermal efficiencies up to 96.8%.

- Vertical firetube with single-pass, counter-flow water travel design for efficient heat transfer
- Cooled cover-plate to recapture and redirect heat back in to the heat exchanger and minimize external temperature

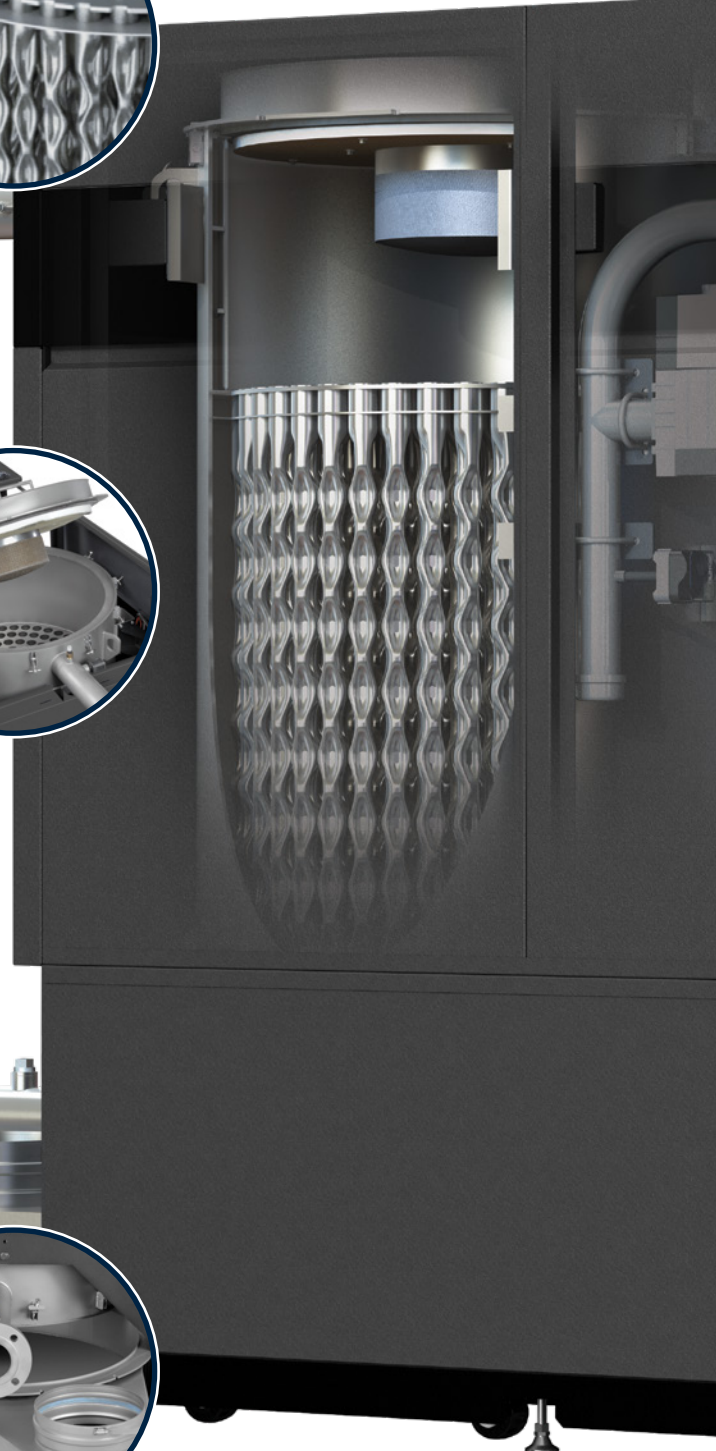
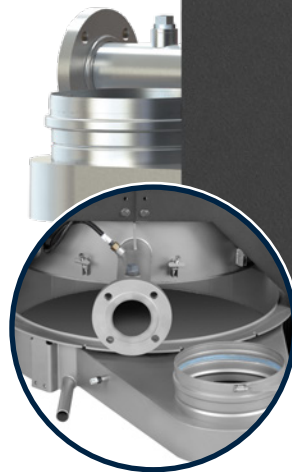
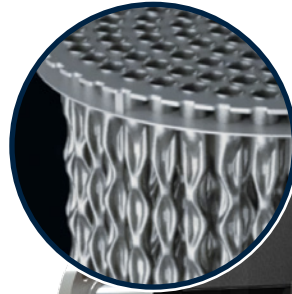
Heat Exchanger Design for Longevity

- 316L stainless steel tube/tube sheet and condensate tray with 304 stainless heat exchanger shell made of material
- Robotic, precision weldments are generously spaced to guard against thermal expansion and thermal shock failures
- Wide-mouth firetube diameters reduce the number of required tube-sheet weldments versus high tube count designs
- Serviceable and replaceable integrated condensate tray

Installation Ease

SVF boilers are designed with the contractor in mind with set-up and installation features to save time, labor and money

- Fast removal shipping crate with integral unloading ramp
- Industrial-grade roller casters allow boiler placement into tight spaces and without fork truck requirement
- Door-fit design allows passage through standard 36" doorways
- Integrated burner-in-cover plate design minimizes overhead design requirement to 18"



The complete bid spec

Who says you can't have it all? Our uniquely designed SVF products cover all the necessary bid specs for new construction.

- ASME Certification
- Industry-leading efficiency
- Vertical firetube design
- Up to 10:1 turn down ratio
- Natural gas/propane
- 160 psi working pressure
- Installation and service ease
- Low NOx emissions
- Full line of venting options
- 100% stainless steel heat exchanger and shell
- **Unity™ user-friendly and system compatible controls**
- **“Door-Fit” design**
- **Corrosion protection/resistance solution**
- **Weil-McLain reliability**



Effortless Unity™ Controller

- English text control with set-up wizard makes every install simple, straight-forward and customizable—even with hybrid applications
- Field-proven control technology with thousands of active running applications
- Up to eight boiler cascading and lead/lag operation
- Common control logic communicates across Weil-McLain Evergreen, SlimFit and SVF families (70-3000 MBH)

Service Ease

Easy maintenance is a hallmark of Weil-McLain commercial high efficiency boilers. Regular maintenance and service is streamlined by service-oriented design engineering.

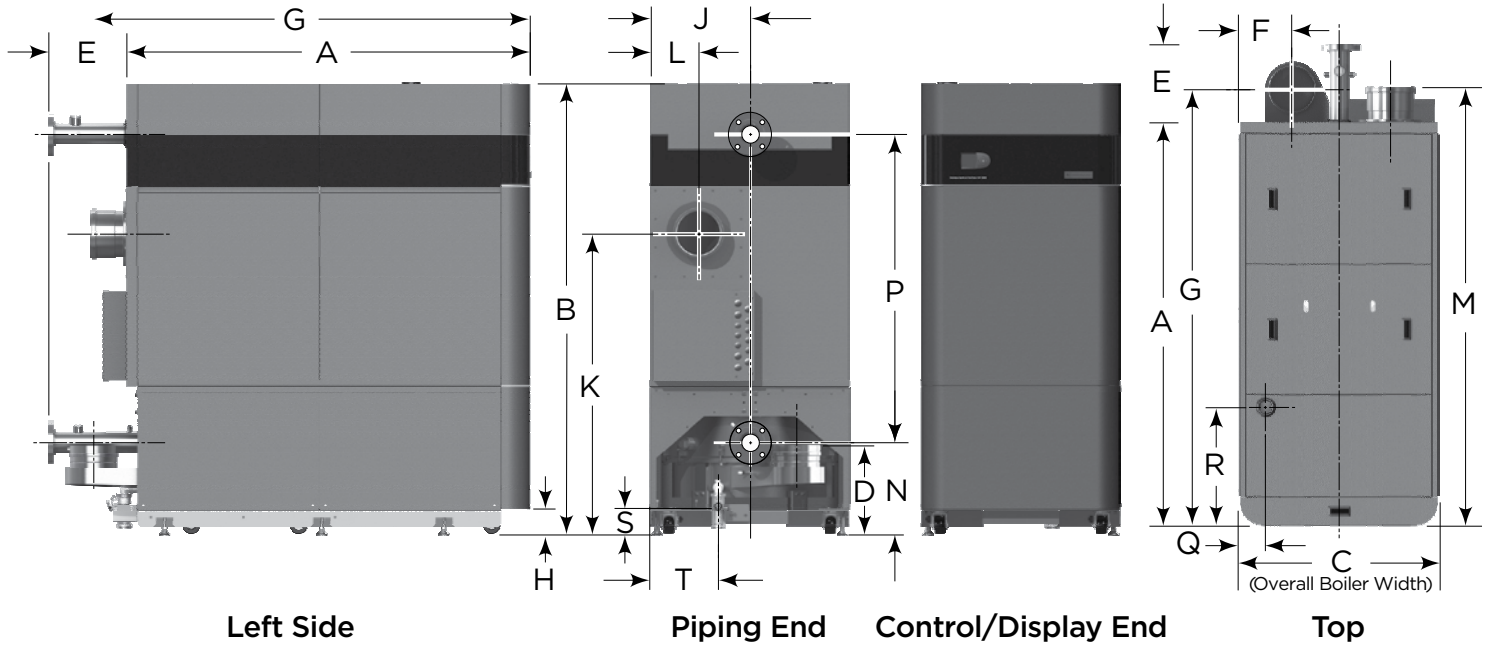
- Counter-balanced hinged cover plate design mitigates need for rigging
- Cover plate access hatch enables quick burner and firetube inspection and heat exchanger washdown
- Adjustable height control panel for improved front access to service and calibration points.
- Dual site glasses for burner fire inspection without panel removal

Boiler Room & System Compatibility

- Zero-clearance capable for side-by-side installation for close boiler room applications
- A wide range of flow rates with very low pressure drops accommodate variable primary and primary/secondary boiler systems
- Cascade control redundancy for reliable system performance with no downtime and optimized boiler plant operation
- Building Automation System integration via Modbus and BACnet MSTP as standard equipment

Contact your Weil-McLain representative or visit Weil-McLain.com to learn more.

Dimensions and Product Specifications



Model No.	A	B	C	D	E	F	G	H	J	K	L	M	N	P	Q	R	S	T
1500/2000	70 ¹ / ₁₆ "	79"	35 ¹ / ₈ "	15 ⁵ / ₈ "	13 ³ / ₈ "	9 ¹ / ₄ "	76 ¹ / ₁₆ "	4 ¹ / ₂ "	17 ³ / ₈ "	52 ¹ / ₁₆ "	8 ³ / ₈ "	76 ¹ / ₁₆ "	16 ¹ / ₄ "	53 ¹ / ₁₆ "	4 ⁷ / ₁₆ "	20 ³ / ₄ "	4 ¹ / ₁₆ "	11 ¹ / ₁₆ "
2500/3000	70 ¹ / ₁₆ "	79"	35 ¹ / ₈ "	15 ⁵ / ₈ "	16 ¹ / ₄ "	8 ³ / ₈ "	77 ¹ / ₁₆ "	4 ¹ / ₂ "	17 ³ / ₈ "	52 ¹ / ₁₆ "	8 ³ / ₈ "	76 ¹ / ₁₆ "	16 ¹ / ₄ "	53 ¹ / ₁₆ "	4 ⁷ / ₁₆ "	20 ³ / ₄ "	4"	10 ¹ / ₄ "

(height dimensions based on 4 1/4" spacing from floor to bottom)

Model No.	AHRI Thermal Efficiency	AHRI Combustion Efficiency	Max Pressure (psi)	Max Input (MBH)	Gross Output (MBH)	Net AHRI Rating (MBH)	Turn Down	Water Conn	Gas Conn	Air/Intake Vent Size (Diameter)	Length	Width†	Height	Shipping Weight (lbs)
SVF 1500	96.5%	-	160	1500	1448	1259	7.5:1**	3" Flange	2" FNPT	8"	84.4"	35.2"	79.3"	2,445
SVF 2000	96.2%	-	160	1999	1923	1672	10.1:**	3" Flange	2" FNPT	8"	84.4"	35.2"	79.3"	2,445
SVF 2500	96.8%	-	160	2499	2419	2104	8.3:1	3" Flange	2" FNPT	10"	87.0"	35.2"	79.3"	2,650
SVF 3000	-	95.8%	160	3000	2874	2499	10:1	3" Flange	2" FNPT	10"	87.0"	35.2"	79.3"	2,650

**Turn down ratios for natural gas, refer to engineering tech data for propane.

†34 1/4" with easy removal of jacket side panels.

Industry Leading Efficiency

- Up to 96.8% Thermal Efficiency*
- ASME Certified Stainless Steel Firetube Heat Exchanger and Shell
- Alternating, Opposed Indentation Firetube Geometry for Maximum Heat Transfer
- 160 psi Working Pressure
- 30 psi Relief Valve

Modulating, Low Emissions Burner Design

- Natural Gas or Propane
- Up to 10:1 Turndown Ratio*
- Low Gas Pressure Operation
- Direct Spark Ignition
- Variable Speed Blower Assembly
- Swirl Plate Enhanced Venturi Mixing System
- Intake Combustion Air Filter
- Negative Pressure Regulated Gas Valve
- 50 VA Transformer
- Temperature & Pressure Gauge
- Outdoor Temp. Sensor
- Outlet & Inlet Water Temp. Sensor
- Flue Gas Temp. Sensor
- System Water Temp. Sensors
 - Immersion Style—Supply & Return

Venting Options

- Direct Exhaust—Vertical (CAT II)
- Direct Vent—Sidewall, Vertical, & Side Intake with Vertical Exhaust (CAT IV)
- Direct Exhaust—Vertical (CAT IV)

*model dependent

Complete Jacket Assembly

- Fully Removable Jacket
- Rugged, Steel Frame & Panels

Easy Install/Serviceability

- Easy Set-up with Control Wizard
- Industrial-Grade Roller Casters and Leveling Legs
- Shipping Crate Ramp
- Hinged Cover Plate
- "Door-Fit" Design
- Zero-Clearance to Combustibles
- Stainless Steel Burner with Woven Fiber Mesh
- Removable, Stainless Steel Condensate Tray
- Single-Point Installation
 - All Field Connections (Excludes Gas/Front) Out Back of Boiler

Multiple Boiler Features

- Up to 8 Boilers, Multiple System functionality with Lead/Lag Capability
- Series, Parallel, or SmartSequencing™
- Lead Boiler Rotation
- Variable Primary Flow Design Capable
- (3) Boiler Priorities Capability—Either (2) Network and (1) Local or (1) Network and (2) Local
- (24) Zone Inputs and Outputs with (8) Total Cascaded Boilers via Zone Stacking™
- Aux Inputs—Flow Switch, End Switch, Etc.
- System Aux Outputs—System Pump or Damper

Control Features

- SVF 1500/2000—120V/1Ph/60Hz
- SVF 2500/3000—208V/3Ph/60Hz
- Manual Reset Push Button through Display
- Operating Status Color LCD Display
- Preset Operating Parameters Including Typical Heating Systems
- Configurable Outdoor Reset
- Rate Setting for Each Input/Output
- Standard Modbus Connectivity
- Additional Heat Demand Functionality
- Contact with 0-10V Output
- Labeled Terminal Blocks for Field Terminations
- Ignition Control
- High Limit & Modulating Temp. Control
- Alarm Control Functionality
- Onboard Time & Date
- Low Water Cut-Off—Manual Reset
- Warm Weather Shutdown
- Freeze Protection
- Boiler Service Interval & Contractor Info

CSD-1 Compliant

- Manual Reset LWCO
- Manual Reset High & Low Gas Pressure Switches
- UL 353 Certified High Limit Control with Manual Reset
- UL 353 Certified Operating Control

Non-Pro-Rated Warranty

- 10 Year Heat Exchanger Warranty
- 2 Year Parts Warranty

Optional Equipment

- Pressure Relief Valve—50/80/100/150 psi
 - System Water Temp. Sensors
 - Strap-On—Supply & Return
 - BacNet or LonWorks Converter Kit
 - Annual Maintenance Kit
 - Corrosion Inhibitor
 - Condensate Neutralizer Kit
 - Anti-Freeze
- Boiler Certifications**
- ASME IV, CSA, AHRI
 - SCAQMD*
 - Commercial Energy Star*

In the interest of continual improvements in product and performance, Weil-McLain reserves the right to change specifications without notice.

Weil-McLain offers BIM-Revit product content to help architects, engineers and contractors design projects accurately and efficiently.



Weil-McLain.com