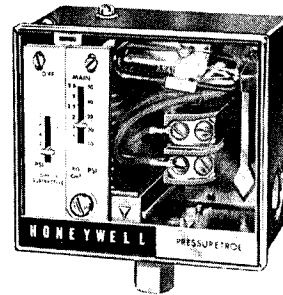




SPECIFICATION DATA

L404A,B,C,D,F, T,V,W, & Y; L604A PRESSURETROL* CONTROLLERS

application: The L404 and L604 Pressure-trol Controllers are high limit controls used in liquid, air, or other non-corrosive gas installations. They are particularly suited to steam heating applications. Do not use these controllers in combustible mediums or those which may be chemically injurious to the brass bellows. The L404T, V, W, and Y models have stainless steel bellows and are suited to heavy fuel oil applications.



construction: These controllers have a bellows operated mercury switch, with the exception of the L404F which has an spdt snap-acting switch.

Manual reset models have a trip-free reset mechanism which ensures that the "limit" role of the controller cannot be defeated by jamming the reset lever.

All models have subtractive differential. All

adjustments are on the front and top of the control. Switch action as well as main scale and differential pressure settings, can be seen through the clear plastic cover.

The device can be pipe-thread-mounted, or surface-mounted by means of screws through the rear of the case. A permanent plumb bob inside the case provides for leveling at installation.

specifications:

MODELS:

Model Number	Psi ^a Range	Maximum Op. Press. (psi)	Pressure Differential at Mid-Scale	Type	Switching Action		
					On Pressure Rise	On Pressure Fall	
L404A	2-15	25	1 to 6 psi	Spst	L404A breaks	L404A makes	
	5-50	85	2 to 12 psi				
L404B	10-150	225	5 to 16 psi	Spst	L404B makes	L404B breaks	
	20-300	350	10 to 40 psi				
L404C	2-15	25	—	Spst	L404C breaks	L404C makes by Manual reset only	
L404Db	5-50	85	—		L404D makes	L404Dbreaks by Manual reset only	
(Manual reset)	10-150	225	—				
	20-300	350	—				
L404F ^c	2-15	20	1 to 5 psi	Spdt		breaks	
	5-50	85	3.4 to 14 psi			makes	
	10-150	225	7 to 21 psi				
	20-300	350	18 to 50 psi				
L404T	10-50	75	4 to 12	Spst	L404T breaks	L404T makes	
L404V	25-150	225	8 to 16		L404V makes	L404V breaks	
L404W	10-50	75	manual reset	Spst	L404W breaks	L404W makes by manual reset only	
L404Y (Manual reset)	25-150	225			L404Y makes	L404Y breaks by manual reset only	
L604A ^d	2-15	25	1 to 6 psi	Spdt	R-W makes and R-B breaks	R-W breaks and R-B makes	
	5-50	85	2 to 12 psi				
	10-150	225	5 to 16 psi				
	20-300	350	10 to 40 psi				

NOTES:

- See CONVERSION TABLE, page 2, for metric equivalents.
- 2-15, 5-150 psi ranges only.
- These Controllers can be converted from spst to spdt in the field by removing the "sticker" from third terminal of the snap switch.
- This Controller is calibrated at several pressure points so as to insure the minimum error over the entirety of the various ranges.

CONVERSION TABLE (Range psi):

Units (psi)	Units (Kg/cm ²)
2 to 15	0.14 to 1.05
5 to 50	0.35 to 3.5
10 to 150	0.70 to 10.0
20 to 300	1.40 to 20.0

MAXIMUM AMBIENT TEMPERATURE: 150 F.

ADJUSTMENT MEANS: External adjustment screws.
 Scaleplate(s) visible through clear plastic cover.
 Scaleplate(s) calibrated in both psi and kg/cm².
 MOUNTING MEANS: 1/4 NPT pipe threads, or surface mount. Siphon furnished with most models.
 APPROVAL BODY LISTINGS: Underwriter's Laboratories, Inc. and Canadian Standards Association.
 DIMENSIONS: See Fig. 1.

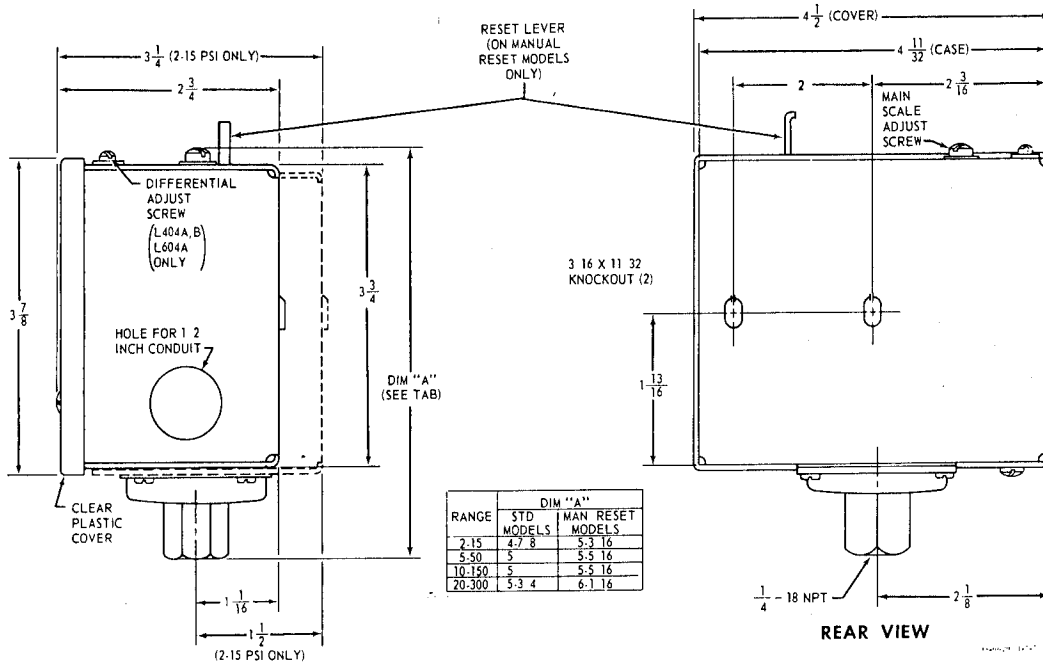


Fig. 1—Approximate Dimensions in Inches.

SWITCH RATINGS (amperes):

		120V AC	240V AC	120V DC	240V DC
L404	Full Load	8.0	5.1	2.4	1.2
	Locked Rotor	48.0	30.6	24.0	12.0
	Resistance Load	10.0	5.0	5.0	2.0
L604	Full Load	8.0	5.1	2.0	1.0
	Locked Rotor	48.0	30.6	20.0	10.0
	Resistance Load	10.0	5.0	8.0	4.0

SPECIAL MODELS AVAILABLE:

- L404A model with mounting lugs
Call ranges.
- L404B model with mounting lugs.
(0 to 15, 2 to 50, and 5 to 150 psi).

typical operation:

Pressure variation in the controlled system causes the bellows-operated switch to make or break contact to energize motorized valves or to start or stop heating equipment.

PRESSURE SENSING ELEMENTS: Stainless-steel diaphragm (2-15, 5-50, 10-150 psi ranges), brass bellows (20-300 psi range).

WHEN SPECIFYING, INDICATE:

- Model number.
- Range.
- Special features.
 - Knurled adjustment knob.
 - Siphon.
 - Special models as listed above.

