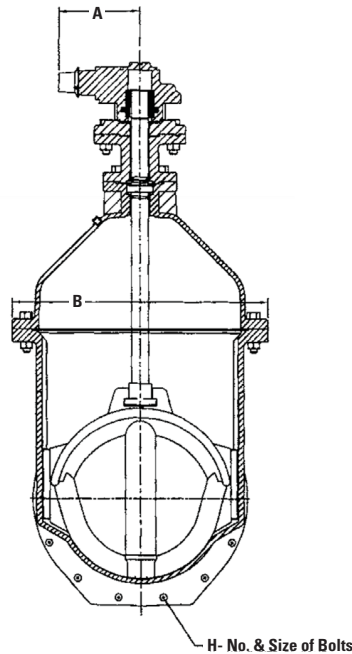
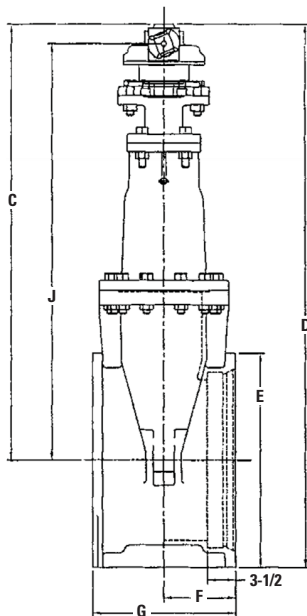
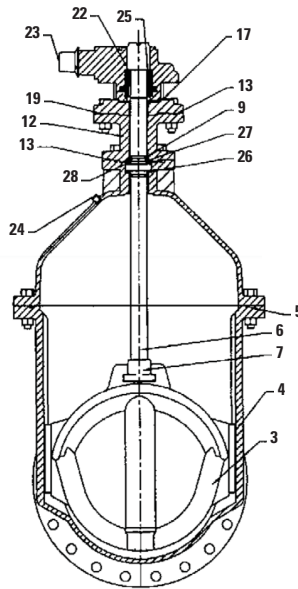
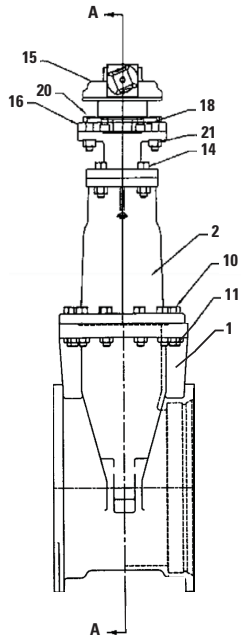


NRS RSGV with MECHANICAL JOINTS and BEVEL GEARING, 14"-24"

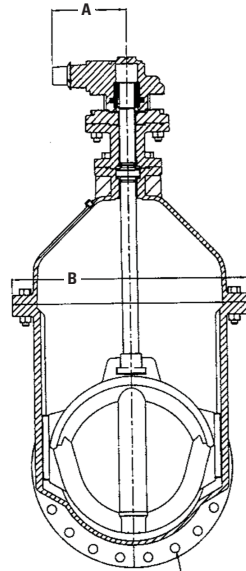
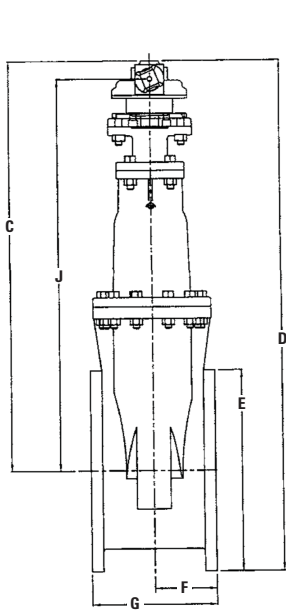


| PARTS LIST | | | |
|------------|---|----------------------------|------------------------------|
| No. | PART | MATERIAL | ASTM DESIGNATION |
| 1 | Body | Ductile Iron | ASTM A536 GR 65-45-12 |
| 2 | Cover | Ductile Iron | ASTM A536 GR 65-45-12 |
| 3 | Wedge | Ductile Iron / Rubber EPDM | ASTM A536 GR 65-45-12 / EPDM |
| 4 | Wedge Cap (18"-24") | Delrin | Delrin |
| 5 | O-ring | Rubber | NBR |
| 6 | Stem | Bronze | ASTM B584 C86700 |
| 7 | Stem Nut | Bronze | ASTM B584 C86700 |
| 9 | O-ring | Rubber | NBR |
| 10 | Hex Head Bolt | Stainless Steel | ASTM F593-304 |
| 11 | Hex Nut | Stainless Steel | ASTM F593-304 |
| 12 | Extension | Ductile Iron | ASTM A536 65-45-12 |
| 13 | O-ring | Rubber | NBR |
| 14 | Hex Head Bolt | Stainless Steel | ASTM F593-304 |
| 15 | Actuator - 3:1 (18"-24") 2:1 (14"-16") | | |
| 16 | Adapter Plate | Ductile Iron | ASTM A536 GR 65-45-12 |
| 17 | Actuator Gasket | Rubber | NBR |
| 18 | Socket Head Bolt | Alloy Steel | Alloy Steel |
| 19 | O-ring | Rubber | NBR |
| 20 | Hex Bolt | Stainless Steel | ASTM F593-304 |
| 21 | Hex Nut | Stainless Steel | ASTM F593-304 |
| 22 | Key | Steel | |
| 23 | OP Nut | Ductile Iron | ASTM A536 65-45-12 |
| 24 | Pipe Plug | Steel | Steel |
| 25 | Drive Sleeve | Steel | AISI 1023 |
| 26 | Cover Bushing | Bronze | ASTM B584 C86700 |
| 27 | Extension Bushing | Bronze | ASTM B584 C86700 |
| 28 | Thrust Bearing (18"-24") | Delrin | Delrin |

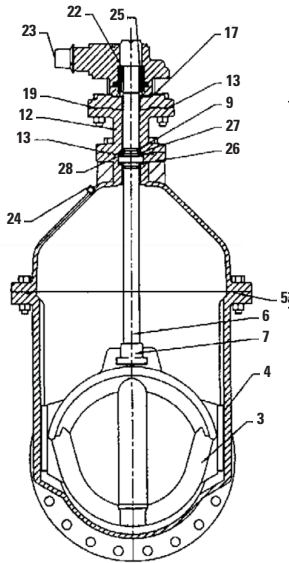
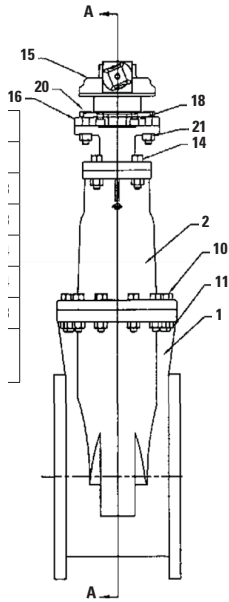
| DIMENSIONS | | | | | | | | | |
|------------|--------|----------|--------|--------|--------|--------|----|-----------|--------|
| SIZE | A | B | C | D | E | F | G | H | J |
| 14 | 9-1/8 | 26-11/16 | 48-5/8 | 59 | 20-1/4 | 8-1/2 | 17 | 3/4" x 10 | 46-5/8 |
| 16 | 9-1/8 | 26-11/16 | 47-5/8 | 59 | 22-1/2 | 8-1/2 | 17 | 3/4" x 12 | 45-5/8 |
| 18 | 10-1/8 | 32-1/4 | 55-3/4 | 68-1/4 | 24-3/4 | 9-5/32 | 18 | 7/8" x 12 | 53-3/4 |
| 20 | 10-1/8 | 32-1/4 | 54-3/4 | 68-1/4 | 27 | 9-5/32 | 18 | 7/8" x 14 | 52-3/4 |
| 24 | 10-1/8 | 38 | 59-7/8 | 75-1/8 | 31-1/2 | 9-1/2 | 19 | 3/4" x 16 | 57-3/8 |

30" & larger sizes require gearing.
24" are furnished with rollers, tracks, and scrapers.

NRS RSGV with FLANGED ENDS and BEVEL GEARING, 14"-24"



H- No. & Size of Bolts
Drilling per ANSI B16.1
Class 125



PARTS LIST

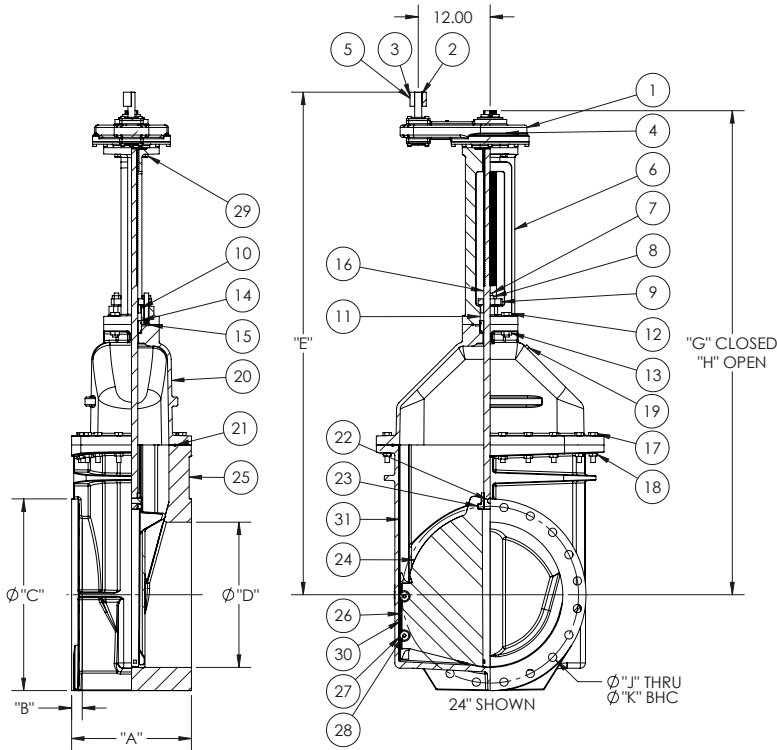
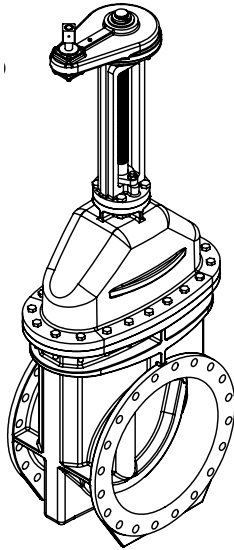
| No. | PART | MATERIAL | ASTM DESIGNATION |
|-----|---|----------------------------|------------------------------|
| 1 | Body | Ductile Iron | ASTM A536 GR 65-45-12 |
| 2 | Cover | Ductile Iron | ASTM A536 GR 65-45-12 |
| 3 | Wedge | Ductile Iron / Rubber EPDM | ASTM A536 GR 65-45-12 / EPDM |
| 4 | Wedge Cap (18"-24") | Delrin | Delrin |
| 5 | O-ring | Rubber | NBR |
| 6 | Stem | Bronze | ASTM B584 C86700 |
| 7 | Stem Nut | Bronze | ASTM B584 C86700 |
| 9 | O-ring | Rubber | NBR |
| 10 | Hex Head Bolt | Stainless Steel | ASTM F593-304 |
| 11 | Hex Nut | Stainless Steel | ASTM F593-304 |
| 12 | Extension | Ductile Iron | ASTM A536 65-45-12 |
| 13 | O-ring | Rubber | NBR |
| 14 | Hex Head Bolt | Stainless Steel | ASTM F593-304 |
| 15 | Actuator - 3:1 (18"-24") 2:1 (14"-16") | | |
| 16 | Adapter Plate | Ductile Iron | ASTM A536 GR 65-45-12 |
| 17 | Actuator Gasket | Rubber | NBR |
| 18 | Socket Head Bolt | Alloy Steel | Alloy Steel |
| 19 | O-ring | Rubber | NBR |
| 20 | Hex Bolt | Stainless Steel | ASTM F593-304 |
| 21 | Hex Nut | Stainless Steel | ASTM F593-304 |
| 22 | Key | Steel | |
| 23 | OP Nut | Ductile Iron | ASTM A536 65-45-12 |
| 24 | Pipe Plug | Steel | Steel |
| 25 | Drive Sleeve | Steel | AISI 1023 |
| 26 | Cover Bushing | Bronze | ASTM B584 C86700 |
| 27 | Extension Bushing | Bronze | ASTM B584 C86700 |
| 28 | Thrust Bearing (18"-24") | Delrin | Delrin |

DIMENSIONS

| SIZE | A | B | C | D | E | F | G | H | J |
|------|--------|----------|--------|--------|--------|-------|----|-------------|--------|
| 14 | 9-1/8 | 26-11/16 | 48-5/8 | 59-1/2 | 21 | 7-1/2 | 15 | 1" x 12 | 46-3/8 |
| 16 | 9-1/8 | 26-11/16 | 47-5/8 | 59-1/2 | 23-1/2 | 8 | 16 | 1" x 16 | 45-3/8 |
| 18 | 10-1/8 | 32-1/4 | 55-3/4 | 68-1/4 | 25 | 8-1/2 | 17 | 1-1/8" x 16 | 55-3/4 |
| 20 | 10-1/8 | 32-1/4 | 54-3/4 | 68-1/4 | 27-1/2 | 9 | 18 | 1-1/8" x 20 | 52-3/4 |
| 24 | 10-1/8 | 38 | 60-3/8 | 76-1/4 | 32 | 10 | 20 | 1-3/8" x 20 | 57-7/8 |

30" & larger sizes require gearing.
24" are furnished with rollers, tracks, and scrapers.

OS&Y RSGV with FLANGED ENDS and SPUR GEARING, 14"-24"



| PARTS LIST | | |
|------------|--------------------------|--|
| No. | PART | MATERIAL |
| 1 | EXEECO IS7 | Bronze ASTM B584 C83600 |
| 2 | Square Key | GR 2 ZN SAE J429 |
| 3 | OP Nut | Gray Iron ASTM A126 Class B |
| 4 | Output Sleeve | Aluminum Bronze ASTM B505 C95800 |
| 5 | Roll Pin | Stainless Steel |
| 6 | Yoke | Gray Iron ASTM A126 Class B |
| 7 | Stud | ASTM F593 S30400/S31600 |
| 8 | Hex Nut | ZN A307 GRADE B / ASTM F593 S30400/S31600 |
| 9 | Follower Plate (14"-16") | Gray Iron ASTM A126 Class B |
| 10 | Packing Gland | Bronze ASTM B584 C83600 |
| 11 | Packing | Braided, Lubricated (Non-Asbestos) Fiber |
| 12 | Hex Cap Screw | GR 2 ZN SAE J429 / 304SS ASTM 18-8SS |
| 13 | Hex Nut | ZN A307 Grade B / ASTM F593 S30400/S31600 |
| 14 | Bushing | ZN A307 Grade B / ASTM F593 S30400/S31600 |
| 15 | Yoke O-ring | EPDM |
| 16 | Stem | 304SS ASTM A276 S30400 / 316SS ASTM A276 S31600 / Silicon Bronze "A" (Everdur) ASTM B98 C65500 |
| 17 | Hex Cap Screw | ZN A307 Grade B / ASTM F593 S30400/S31600 |
| 18 | Hex Nut | ZN A307 Grade B / ASTM F593 S30400/S31600 |
| 19 | Pipe Plug | 18-8SS |
| 20 | Cover | Ductile Iron ASTM A536 65-45-12 ASTM B16 Alloy 306 |
| 21 | Cover O-Ring | EPDM |
| 22 | Stem O-Ring | EPDM |
| 23 | Stem Nut | Bronze ASTM B584 C87610 / Bronze ASTM B584 C87850 / Bronze ASTM B763 C99500 (NDZ) (14"-20") Bronze ASTM B584 C83600 (24") |
| 24 | Wedge | Ductile Iron ASTM A536 Grade 65-45-12 |
| 25 | Body-Flanged Type | Ductile Iron ASTM A536 Grade 65-45-12 |
| 26 | Scraper (24") | Bronze ASTM B584 C83600 |
| 27 | Roller (24") | Bronze ASTM B584 C83600 |
| 28 | Pin (24") | Stainless Steel AISI 303 |
| 29 | Hex Cap Screw | ZN A307 Grade B / ASTM F593 S30400 / S31600 |
| 30 | Wedge Cap (18"-20") | Delrin |
| 31 | Track (24") | Stainless Steel AISI 316 |

| DIMENSIONS | | | | | | | | | | No. Turns to Open | Weight (lbs.) |
|------------|-----|----------|----------|---------|---------|---------|----------|-------------|---------|-------------------|---------------|
| SIZE | A | B | C | D | E | G | H | J | K | | |
| 14 | 15" | 1-3/8" | 21-1/16" | 14-1/4" | 64-1/2" | 59-3/4" | 74-3/4" | 1" X 12 | 18-3/4" | 52 | 670.00 |
| 16 | 16" | 1-7/16" | 23-1/2" | 16-1/4" | 64-1/2" | 59-3/4" | 74-3/4" | 1" X 16 | 21-1/4" | 52 | 735.00 |
| 18 | 17" | 1-9/16" | 25" | 18-1/4" | 74-5/8" | 71-1/4" | 92-9/16" | 1-1/4" X 16 | 22-3/4" | 64 | 1100 |
| 20 | 18" | 1-11/16" | 27-1/2" | 20-1/4" | 74-5/8" | 67-3/8" | 94-3/8" | 1-1/4" X 20 | 25" | 64 | 1325 |
| 24 | 20" | 1-7/8" | 32" | 24-1/4" | 83-1/2" | 81-3/8" | 110-5/8" | 1-3/8" X 20 | 29-1/2" | 88 | 1900 |