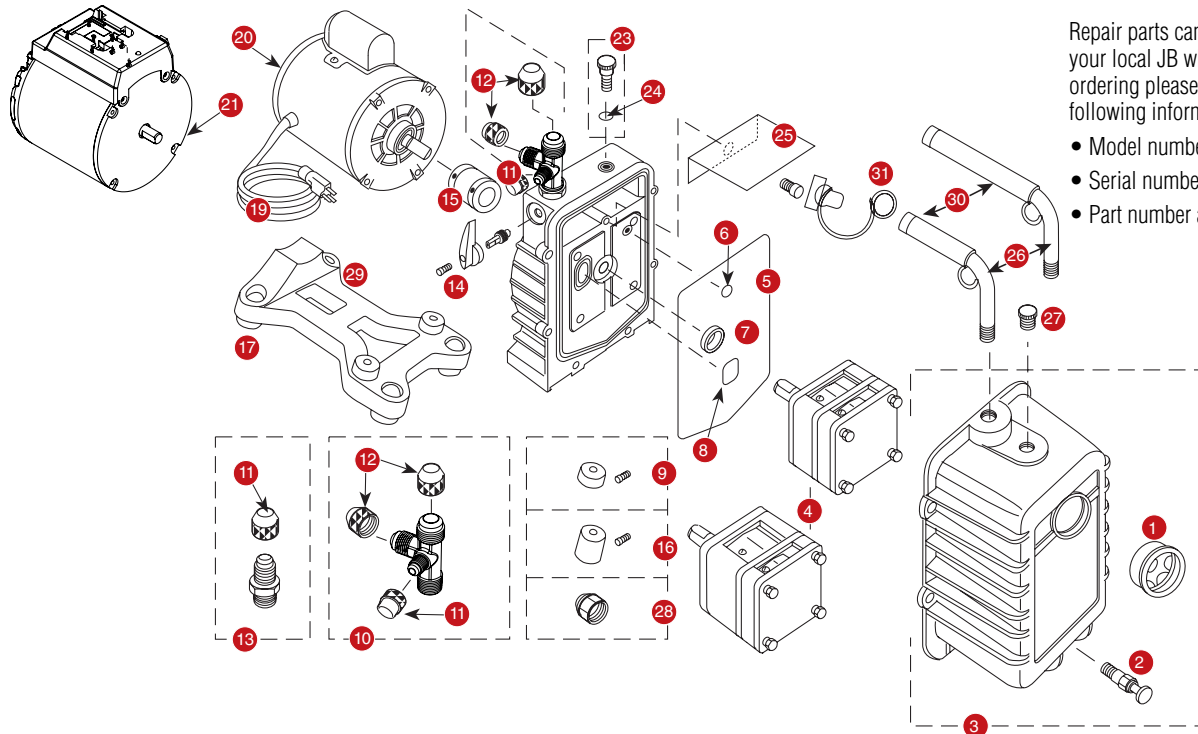




# PLATINUM®

## VACUUM PUMP REPAIR PARTS; DV-42N THROUGH DV-285



Repair parts can be ordered from your local JB wholesaler. When ordering please provide the following information:

- Model number
- Serial number
- Part number and description

PLATINUM® SERIES REPAIR PARTS – ALL MODELS		
REF.NO.	PART NO.	DESCRIPTION
1	PR-1	Sight glass
2	PR-2	Drain valve
6	PR-211	Trap o-ring, gas ballast
7	PR-3	Shaft seal
8	PR-315	Trap o-ring, intake
9	PR-4	Rubber foot and screw assembly – 1 per package (Prior to 2006)
10	PR-78	Angled intake tee with caps
	PR-76	Intake tee cross with caps (models prior to 2020)
11	NFT5-4	1/4" O-ring, cap
12	NFT5-6	3/8" O-ring, cap
	NFT5-8	1/2" O-ring, cap
14	PR-209	Plastic isolation valve handle and screw w/stem, O-rings and retainer (not interchangeable w/PR-210)
15	PR-208	Flexible coupler* 1-1/2"(Start of 1995) 2-1/2" (Prior to 12/1994)*
	PR-308	Flexible section only 7/8"; use w/PR-208 flexible coupler*
	PR-6	Flexible coupler* 2-1/4"
16	PR-77	1-5/8" Middle section; use w/PR-6 flexible coupler*
	PR-42	Motor foot w/screw (prior to 2006)
17	PR-59	Base foot
19	PR-31	Line cord (Marathon motor) old style
	PR-58	Line cord (Emerson motor) new style

PLATINUM® SERIES REPAIR PARTS – ALL MODELS		
REF.NO.	PART NO.	DESCRIPTION
20	PR-54	Rocker switch w/wire leads (Emerson) models since 2004
21	PR-607	FLEX motor
	PR-206	1/2 Hp, 115v, 60 Hz Motor w/line cord and switch
	PR-207	1/2 Hp, 115/230v, 50/60 Hz Dual Voltage Motor (not shown)
	PR-307	1/2 Hp, 115/230v, 50/60 Hz Spark Proof Motor (not shown)
23	PR-7	Gas ballast valve w/o-ring
24	P90009	O-ring, gas ballast valve
25	PR-40	Splash guard and screw (excludes 3 CFM manufactured before 1/01)
26	PR-75	Cushioned handle w/lift ring 1/2" NPT and DV-EP-8 as of 2008
	PR-205	Cushioned handle 3/8" NPT
	PR-605	Cushioned handle w/lift ring FLEX
27	PR-22	Oil fill plug w/o-ring
28	PR-56	Adapter nut w/nut o-ring
30	PR-500	Cushion and cap 3/8" NPT
	PR-501	Cushion and cap 1/2" NPT
	PR-601	Cushion and cap FLEX
31	DV-EP6	Tethered safety cap 3/8" NPT (prior to 2008)
	DV-EP8	Tethered safety cap 1/2" NPT (as of 2008)

Emerson® is a registered trademark of US Motors. Marathon® is a registered trademark of Marathon Electric.  
\* Coat with thread sealant when replacing.





# PLATINUM<sup>®</sup>

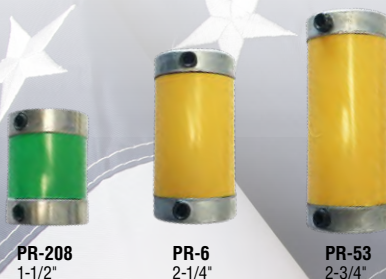
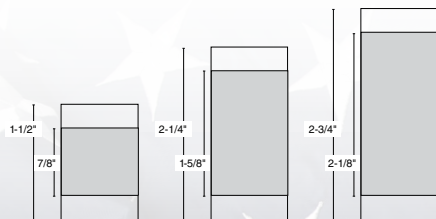
## VACUUM PUMP REPAIR PARTS; DV-42N THROUGH DV-285

PLATINUM <sup>®</sup> SERIES REPAIR PARTS – MANUFACTURED AFTER JANUARY 2001		
REF.NO.	PART NO.	DESCRIPTION
3	PR-300	DV-42N through DV-200N cover assembly w/sight glass and drain valve
	PR-301	DV-285N Cover assembly w/sight glass and drain valve
4	PR-302	DV-42N and DV-85N Cartridge w/o-rings and cover seal
	PR-303	DV-142N Cartridge w/o-rings and cover seal
	PR-304	DV-200N Cartridge w/o-rings and cover seal
	PR-314	DV-285N Cartridge w/o-rings and cover seal
5	PR-311	Cover seal
13	PR-32	1/4" Intake w/cap
20	PR-35	Rocker switch w/prongs (Marathon 1101-0105)
29	PR-62	Pump base (includes feet); fits all pumps with serial #0101 and higher
PLATINUM <sup>®</sup> SERIES REPAIR PARTS – MANUFACTURED BEFORE JANUARY 2001		
5	PR-217	Cover seal
8	PR-215	Trap o-ring, intake
14	PR-210	Metal isolation valve handle and screw
PLATINUM <sup>®</sup> SERIES REPAIR PARTS – NOT SHOWN		
PR-18	Cartridge valve repair kit (includes DV-285N as of 2007 models)	
PR-52	DV-285N Cartridge valve repair kit (prior to 2007 models)	
PR-45	Pump repair kit PR-1, PR-59 (4), PR-42, PR-208	
PR-211	Trap gas ballast o-ring	

### Flexible Couplers

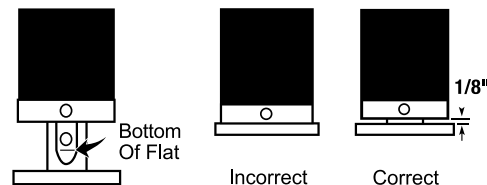
Flexible couplers are a three part assembly (Figure 1). Two metal hubs that look like gears and a flexible middle section. The one hub is attached to the shaft of the motor and the other is attached to the shaft of the cartridge. NOTE: The color of the flexible middle section can be black, yellow or green. The middle sections of the PR-208 and the PR-6 can be ordered separately. The PR-208 has a "D" bore in the metal hubs to prevent hubs from spinning on shafts.

1994 and older = PR-6  
 1995 and newer (including BEAST) = PR-208  
 Prior to 2001 -250 models after serial#0198 and dual pumps prior to 1988 = PR-53



### Replacing Coupler (Motor Removed)

Coat setscrew threads with removable thread sealant. Align coupler setscrew with flat surface of cartridge shaft. Tighten screw so coupler slides on to shaft but stops at the bottom of the flat. Tighten until screw head is flush with coupler surface (approx. 40 in-lbs).



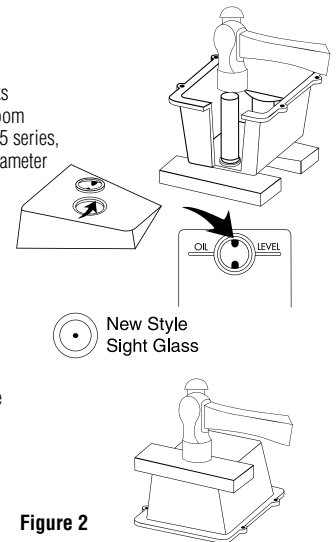
### Sight Glass Repair

**Step 1:** With cover off of the pump, lay on two blocks of wood. Pop out the sight glass using a broom handle or other object as a punch. For DV-85 series, DV-142 series, or DV-200 series use a 1" diameter punch (Figure 2).

**Step 2:** Clean the surface with acetone or nail polish remover. Put loctite on the inside surface of the hole.

**Step 3:** Install the new sight glass from the outside. The hole position does not matter with the new style sight glass.

**Step 4:** With the wood block covering the sight glass, tap the sight glass into place. Replace the cover on the pump.



### Tethered Safety Exhaust Caps

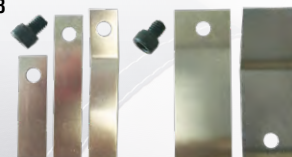
Red tethered safety exhaust caps for handles help prevent oil leakage out handles if pump is overturned during transportation.

DV-EP-6 3/8" NPT  
 DV-EP-8 1/2" NPT



### Cartridge Valve Repair Kit

PR-18



### Cord Options

