



Advanced Heating
& Hot Water Systems

Phoenix

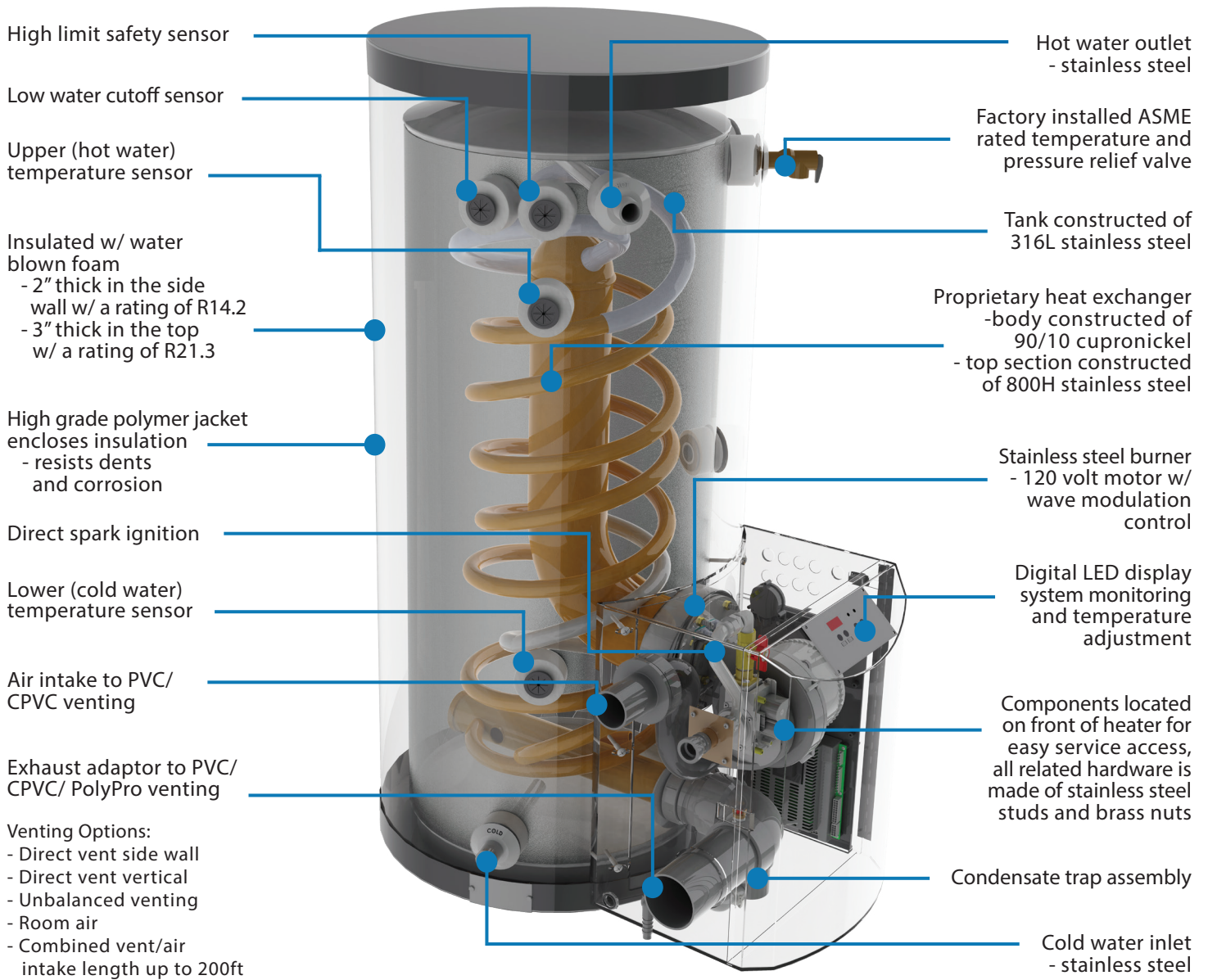
316L Stainless Steel
Gas Fired Water Heater



A BRAND OF  **ARISTON**
THERMO USA

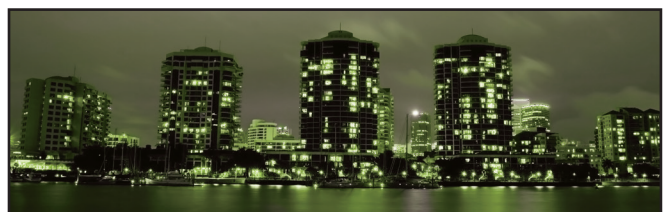
Commercial Water Heater

SPECIFICATION GUIDE



MODEL	Input Modulation	100°F Rise
PH100-55	35,000-100,000	115
PH130-55	35,000-130,000	148
PH160-55	40,000- 160,000	184
PH199-55	40,000-199,000	229
PH100-80	35,000-100,000	116
PH130-80	35,000-130,000	150
PH160-80	40,000-160,000	184
PH199-80	40,000-199,000	229
PH100-119	35,000-100,000	117
PH130-119	35,000-130,000	152
PH160-119	40,000-160,000	184
PH199-119	40,000-199,000	230

Model	Input Modulation
PH130-80S	35,000-130,000
PH199-80S	40,000-199,000
PH130-119S	35,000-130,000
PH199-119S	66,000-199,000
PH199-119SNHX	66,000-199,000
PH199-55SA	40,000- 199,000



SUPERIOR STAINLESS STEEL CONSTRUCTION

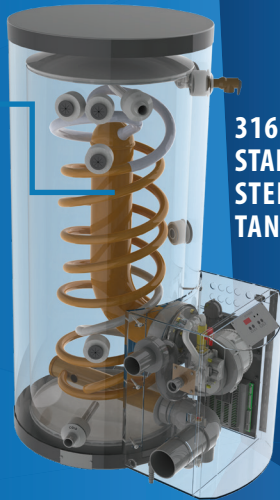
Why Choose A Stainless Steel Tank?



HTP has produced more stainless steel tanks in North America since 1976, than any other company in the industry.

HTP'S UNIQUE HEAT EXCHANGER

- Durable Construction
- High Performance
- Excellent Heat Transfer Capabilities
- Self Cleaning: Eliminating Scale Build-up



316L STAINLESS STEEL TANK



Our Components are Made of Durable Materials:

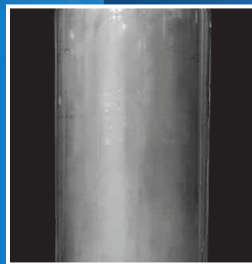
- Dip Tubes
- Port Outlets
- Heat Exchanger
- Tank Construction

Made with High Grade 316L and 800H Stainless Steel Materials.



The Advantages

Stainless Steel vs. Glass-Lined



HTP's
119 GAL. Tank
405 LBS. (Ship. Weight)



Top Competitor's
119 GAL. Tank
555 LBS.

- Eliminates Scale Build-up on HX
- Prolongs Tank Life
- Lightweight Construction

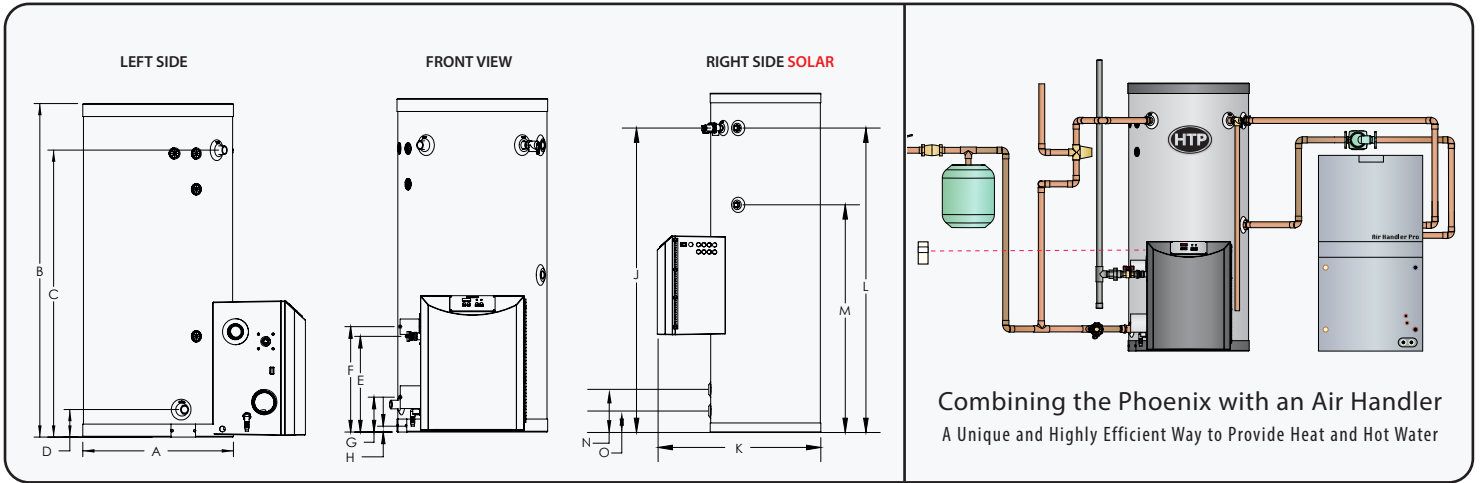
Phoenix Water Heaters

- UL/ULC listed
- exceed ASHRAE 90.1b-1992 efficiency requirements
- ANSI Z 21.10.3 certified
- comply w/ NOx emissions set forth in SCAQMD Rule 1146.2-1998
- factory assembled, test-fired, and adjusted for proper combustion parameters
- operate at altitudes up to 4,500 feet above sea level without additional parts or adjustments

Note: Due to variations by state in CSD-1 requirements, please consult with the factory for all controls required in your jurisdiction

...Because They Are Built To Last!

DIMENSIONS & SPECIFICATIONS



PHOENIX WATER HEATER AND SANITIZER BOOSTER DIMENSIONS																	
MODEL	GAL.	A	B	C	D	E	F	G	H	J	K	L	M	SYSTEM RELIEF PIPE	GAS LINE CONN.	AUXILIARY CONN.	
PH100-55/ PH130-55 PH160-55/ PH199-55	55	23"	52"	45"	5"	14-3/4"	16-1/4"	5-1/4"	1"	45"	34-1/4"	45"	27-1/2"	3/4"	3/4"	1" FNPT	
PH100-80/ PH130-80 PH160-80/ PH199-80	80	23"	72"	64"	5"	17"	18-1/2"	7-3/4"	3-1/4"	64"	34-1/4"	64"	29-3/4"				
PH100-119/ PH130-119 PH160-119/ PH199-119	119	27"	74"	66-1/4"	7-1/2"	18-3/4"	21-1/2"	10-1/2"	5"	66-1/2"	38-1/2"	66-1/2"	31"				
PH199-55SA	55	23"	52"	45"	5"	14-3/4"	16-1/4"	5-1/4"	1"	45"	34-1/4"	45"	27-1/2"				

PHOENIX SOLAR WATER HEATER DIMENSIONS																	
SRCC SYSTEM AVAILABLE	MODEL	GAL.	A	B	C	D	E	F	G	H	J	K	L	M	N	O	
PH-80S	PH130-80S/ PH199-80S	80	23"	72"	65"	5-3/4"	36"	37-1/2"	27"	22-1/2"	64-3/4"	34"	64-3/4"	48-3/4"	9-3/4"	5-1/4"	
PH-119S	PH130-119S/ PH199-119S	119	27"	74"	66"	7-1/4"	36-3/4"	38-1/4"	27-1/4"	23-1/4"	66-1/4"	38-1/4"	66-1/4"	49-1/4"	11-1/2"	7"	

PHOENIX WATER HEATER AND SANITIZER BOOSTER SPECIFICATIONS										
MODEL	BTU's	AIR INTAKE/ EXHAUST VENT	INLET/ OUTLET	SHIPPING WEIGHT	MAX. TEMP LIMIT	AHRI CERTIFIED <small>www.ahridirectory.org</small>			Ratings not Certified by AHRI	
						First Hr. Rating	UEF	THERMAL EFFICIENCY	First Hr. Rating	
PH100-55	100,000	2"	1" NPT	175 LBS	160 F	187 GAL.	.89			
PH130-55	130,000	2"	1" NPT	175 LBS	160 F			94%		205 GAL.
PH160-55	160,000	3"	1" NPT	175 LBS	160 F			95%		245 GAL.
PH199-55	199,000	3"	1" NPT	175 LBS	160 F			95%		295 GAL.
PH100-80	100,000	2"	1-1/2" NPT	235 LBS	160 F	132 GAL.	.93			
PH130-80	130,000	2"	1-1/2" NPT	235 LBS	160 F			95%		227 GAL.
PH160-80	160,000	3"	1-1/2" NPT	235 LBS	160 F			96%		265 GAL.
PH199-80	199,000	3"	1-1/2" NPT	235 LBS	160 F			95%		314 GAL.
PH100-119	100,000	2"	1-1/2" NPT	405 LBS	160 F	214 GAL.	.90			
PH130-119	130,000	2"	1-1/2" NPT	405 LBS	160 F			96%		257 GAL.
PH160-119	160,000	3"	1-1/2" NPT	405 LBS	160 F			96%		295 GAL.
PH199-119	199,000	3"	1-1/2" NPT	405 LBS	160 F			96%		335 GAL.
PH199-55SA	199,000	3"	1" NPT	175 LBS	184 F			95%		295 GPH

PHOENIX SOLAR WATER HEATER SPECIFICATIONS									
SRCC SYSTEM AVAILABLE	MODEL	BTUH	AIR INTAKE/ EXHAUST VENT	INLET/ OUTLET	AUXILIARY CONN.	GAS LINE CONN.	SYSTEM RELIEF PIPE	SHIPPING WEIGHT	MAX. TEMP LIMIT
PH-80S	PH130-80S PH130-119S	130,000	2"	1" NPT	1"	3/4"	3/4"	245 LBS	160 F
PH-119S	PH199-80S PH199-119S	199,000	3"	1" NPT	1"	3/4"	3/4"	415 LBS	160 F

Note: All units are compatible with natural gas or liquid propane, but must be specified upon placing an order.

STANDARD FEATURES

- Modulating Burner
- 5:1 Turndown Ratio
- Vents in PVC, CPVC, Stainless Steel, ULC S636
- Limited Warranty
7 Year Residential
3 Year (5 Year Option Available) Commercial

WHAT'S IN THE BOX

- Intake PVC Tee w/ Screens
- Exhaust PVC Coupling w/ Screens
- Installation Manual
- Solar Addendum (Solar Models Only)
- LP Conversion Kit (Natural Gas Models Only)

OPTIONAL EQUIPMENT

- Outdoor Sensor
- 2", 3" PVC Concentric Vent Kit
- 3", 4" Stainless Steel Outside Termination Vent Kit
- Condensate Neutralizer
- PC Connection Cable w/ Software
- Sanitizer Booster Kit

