

**hilmar**<sup>®</sup>  
**RETOOL + CONQUER**<sup>™</sup>

**PRODUCT CATALOG**

The work takes you from superheat to freezing cold. And requires you get really comfortable in the dark, dirty and downright cramped. You gotta find a way to keep your cool even when the customer has been without hers for 27 hours. The tools in your truck are the only help you've got. And that's the kicker. Because while the work keeps getting more complex, the tools haven't evolved much at all. UNTIL NOW.



## Table of Contents

<b>VACUUM PUMPS</b>		<b>FLARING TOOLS</b>	
Vacuum Pumps	2-4	Flare Family	33
Vacuum Pump Oil	5	Orbital Flare	34-35
Vacuum Gauge	6	Orbital Flare Kit	36
Recovery Machine	7	Large Basic Flare	37
<b>VALVE CORE REMOVAL TOOL</b>		Basic Flare	38
Valve Core Removal Tools	8	Quick-Engage Flare and Swage Kit	39
<b>MANIFOLDS</b>		Large Flare/Swage	40-41
Manifold Family	9-10	Basic Flare/Swage Kit	42
4-Valve Aluminum Manifold	11-14	<b>SWAGING TOOLS</b>	
2-Valve Aluminum Manifold	15-16	Swage Family	43-44
2-Valve Basic Manifold	17	Compact Swage Tool Kit	45
Replacement Parts	18	Deluxe Compact Swage Tool Kit	46
<b>ELECTRONIC TOOLS</b>		Punch Swage Set	47
Dual Readout Thermometer	19	Multi-Swage Punch	47
Thermocouple Clamp	20	<b>TUBING CUTTERS</b>	
<b>GAUGES</b>		Tubing Cutters Family	48-49
Gauge Family	21	Small Diameter Tubing Cutters	50
Analog Gauges	22	Large Diameter Tubing Cutters	51
<b>HOSES</b>		Plastic Tubing Cutter	52
Hose Family	23	Ratcheting Plastic Tubing Cutters	53
Refrigeration Hoses	24	<b>SHEET METAL &amp; DUCT TOOLS</b>	
Refrigeration Hoses with Ball Valve Adapters	25	Sheet Metal & Duct Tools Family	54-55
Ball Valve Extensions	26	Aviation Snips	56
Refrigeration Hoses with Ball Valve Ends	27	Offset Aviation Snips	56
Stainless Steel Evacuation Hoses	28	Tinner Snips	57
<b>BENDING TOOLS</b>		Aluminum Handle Snip	57
Bender Family	29	Pipe Duct Cutter	58
Compact Bender Kits	30	V-Notcher	58
Tri Tube Benders	31	Snap Lock Punch	59
Spring Benders	32	Hand Crimpers	59
		Hand Seamers	60
		Folding Tools	61
		Duct Stretcher	61
		Hole Cutters	62
		Duct Slitting Tool	62
		Duct Knife	63
		Cable Tie Tensioning Tool	63

At hilmor, we're revolutionizing the HVAC/R world by creating tools that are a step ahead. Every tool we make is designed to give you all the features you need and none of the ones you don't. We're determined to deliver smart, innovative solutions when and where you need them most. So, you'll be fully equipped to retool and conquer.

## Table of Contents

<b>DRIVING TOOLS</b>		<b>SERVICE TOOLS</b>	
Driving Tools Family	64	Service Tools Family	99
Fast Connect Magnetic Nut Driver Set	65	Service Wrenches	100
Fast Connect Screwdriver Bit Set	66	Inspection Mirrors	101
Magnetic Nutsetters	67	Fin Straightening Tools	102
Magnetic Nut Drivers	68-70	Nitrogen Purge Tool	103
Quick-Change Magnetic Nut Drivers	71-72	Deburring Tools	104
Ratcheting 9 in 1 Multi-Tool	73	Tube Prep Brushes	104
9 in 1 Multi-Tool	74	Locking Pliers Pinch-Off Tool	105
6 in 1 Stubby Multi-Tool	74		
Impact Fasteners Bits	75	<b>WORK LIGHTS</b>	
Fast Connect Bit Extension	76	Work Lights Family	106
Keystone Tip Demolition Screwdrivers	77-78	Work Light	107
Keystone Tip Screwdrivers	79	Mini Work Light	107
Cabinet Tip Screwdrivers	79	Portable Work Light	108
Terminal Block Screwdriver	80	Pivoting Work Light	108
Phillips Tip Screwdrivers	80	Compact Work Light	109
Screwdriver Sets	81	Pocket Work Light	109
Precision Screwdriver Set	82		
<b>PLIERS, WRENCHES &amp; WIRE STRIPPERS</b>		<b>WORKSITE STORAGE</b>	
Hex Key Sets	83-84	Worksite Storage Family	110
Pliers, Wrenches & Wire Strippers Family	85	HVAC/R Tote	111
Digital Adjustable Torque Wrench	86-87	Backpack Tool Bag	112
Adjustable Wrenches	88	Tool Center Bag	113
Tongue & Groove Pliers	89-90	HVAC/R Refrigerant Tank & Utility Backpack	114
Lineman's Pliers	91	HVAC/R Carrying Strap	115
Long Nose Pliers	91	Zipper Pouch	116
Diagonal Cutting Pliers	92	HVAC/R General Purpose Gloves	117
Crimping Tool	92	HVAC/R Sheet Metal Gloves	117
Wire Strippers	93		
Self-Adjusting Wire Stripper	94	<b>KITS</b>	
		HVAC/R Starter Kit	118-119
<b>UTILITY KNIVES</b>		<b>WARRANTY/PRESSURE-TEMPERATURE CHART</b>	
Utility Knives and Blades Family	95-96	Warranty	120
Retractable Utility Knife	97	Pressure-Temperature Chart	121
Folding Utility Knife	98		

# YOUR DAYS OF MESSING AROUND WITH CLUNKY, UNRELIABLE PUMPS ARE OVER.



The first thing you'll notice is how two durable hoist points allow you to transport your Vacuum Pump with ease. Simply attach the hilmar HVAC/R Carrying Strap, throw it over your shoulder and get to work. Several innovative features also help make changing oil easier. The front of the pump where the oil is stored is sloped downwards, creating a natural path for oil to drain faster. A large sight glass allows oil to be checked more easily and an oversized oil fill port makes pouring in new oil easier. These vacuum pumps have been retooled to make evacuation as easy as possible.



**Hilmer**  
VACUUM PUMP OIL  
ACETTE SPALIA ROZCIĄŻAJĄCE OLEJ WAKUUMOWY  
ACETTE SPALIA ROZCIĄŻAJĄCE OLEJ WAKUUMOWY  
ACETTE SPALIA ROZCIĄŻAJĄCE OLEJ WAKUUMOWY  
**HIGH PERFORMANCE  
VACUUM PUMP OIL**

**Hilmer**



# VACUUM PUMP

Your days of messing around with clunky, unreliable pumps are over. These two-stage rotary vane vacuum pumps have been retooled with features to make pulling vacuum down to 25 microns a breeze.



### Hands-Free Carry

Two durable hoist points make transporting the vacuum pump easier. Compatible with the hilmer HVAC/R Carrying Strap.



### Drains Oil Quickly

A sloped and channeled housing helps oil drain fast.



### Extra Confidence

A leak-proof blank-off valve isolates the pump from the system for accurate vacuum readings and easy oil change without losing a vacuum.



### Easy To Check Oil

Quickly identify oil level and detect oil contamination through a large sight glass.



### Quick, Easy Access

Easy access to a large oil fill port.

## Product Specifications

Item Numbers	1947970	1948121	1948122	1950532
Product Descriptions	VP3	VP5	VP9	VP12
CFM	3	5	9	12
Oil Capacity	11 oz.	11 oz.	17 oz.	15 oz.
Motor HP	1/3	1/2	1	1
<b>Dimensions</b>				
Length	13-1/2"	13-1/2"	15-3/4"	15-3/4"
Width	4-3/4"	4-3/4"	5-1/2"	5-3/4"
Height	10-1/2"	10-1/2"	10-3/4"	10-1/4"
Weight	19.7 lbs	19.7 lbs	22.9 lbs	25.5 lbs



Vacuum Pump  
1950532

Vacuum Pump  
1948122

Vacuum Pump  
1948121

Vacuum Pump  
1947970

# VACUUM PUMP OIL

Working in basements and crawlspaces all day, you're bound to get dirty. And so is your vacuum pump oil. Oil is the lifeblood of a vacuum pump and filters moisture and contaminants from the system. Clean oil means longer life for your pump and deeper, faster vacuum pulls.

## Product Specifications

Item Number	1948211	1948212
Product Descriptions	VPOQ	VPOG
Volume	Quart (Case of 12)	1 Gallon (Case of 6)

## Dimensions\*

Length	2-5/8"	4-1/8"
Width	4-1/8"	7"
Height	8-7/8"	12"
Weight	3 lbs.	8 lbs.

\*Per Bottle



Vacuum Pump Oil  
1948212, 1948211

# VACUUM GAUGE

Easy positioning. Easier readings. Easily, the year's best vacuum gauge.



### Easy to Read

LED backlit screen for easy to read display.



### Long Battery Life

80 hour battery life for Remote Sensor and Handheld.\*



### Added Convenience

Programmable audible micron alarm with high and low settings.



### Added Versatility

Includes foldable hook and magnet to easily attach to any unit.

\*measured with LED backlight turned off

## Product Specifications

Item Number	1950217
-------------	---------

Product Description	VG
---------------------	----

### Contents

1 - Remote Sensor with 3 AAA Batteries  
1 - Handheld Display with 3 AA Batteries  
1 - 1/4" Female Flare Adaptor  
1 - Protective Case

### Dimensions

Length	9.2"
Width	4.9"
Height	12-1/5"

### Replacement Parts

Item Number	1950219
-------------	---------

1 - Vacuum Gauge Sensor

Item Number	1950531
-------------	---------

1 - Vacuum Gauge Sensor

1 - Vacuum Gauge Transmitter



Vacuum Gauge Kit  
1950217



# RECOVERY MACHINE

Pulls like a powerhouse. Lifts like a feather. The recovery machine designed for you.



### Quick, Easy Access

Conveniently located hose ports make connecting hoses easier and reduces strain



### Accurate, Easy to Read

Digital LCD Screen provides accurate and easy to read pressure readings.



### Superior Security

High- and low-pressure automatic shutoff protects machine and helps ensure safety.



### Convenient Storage

Dedicated power cord wrap protects the cord and secures the plug.

## Product Specifications

Item Number	1950536
-------------	---------

Product Description	RM
---------------------	----

### Dimensions

Length	9.2"
Width	4.9"
Height	12-1/2"
Weight	17-1/2 lbs.

### Replacement Parts

Item Number	1950537
-------------	---------

Product Description	
---------------------	--

1- Intake Filter

1- O-Ring



Lightweight Brushless DC  
Refrigerant Recovery Machine  
1950536

# VALVE CORE REMOVAL TOOL

Valve Core Removal Tools are designed to make work more efficient, but there's nothing efficient about losing tools or equipment. The hilmor Valve Core Removal Tool has a built-in rare earth magnet on the back of the plunger for convenient jobsite storage. After removing the core for evacuation or change-out, the plunger and valve core can be stored on the side of the unit. The tool comes in both 1/4" and 5/16" sizes. The hilmor Valve Core Removal Tool uses a spring gripper, as opposed to an O-ring to grab valve cores, increasing the life of the tool.

## Product Specifications

Item Number	1947967	1947968
Product Descriptions	VCRT14	VCRT516
Connection Size	1/4"	5/16"
Maximum Allowable Working Pressure	800 PSI	800 PSI
Burst Pressure	4000 PSI	4000 PSI
Operating Temperature	-20° F to +180° F	-20° F to +180° F

## Dimensions

Length	2-1/2"	2-1/2"
Width	5-3/4"	5-3/4"
Height	7-7/8"	7-7/8"
Weight	8 oz.	8 oz.



### Jobsite Storage

Built-in rare-earth magnet for convenient plunger storage, minimizing lost parts on the job.



### Superior Versatility

Vacuum tested to 20 microns and tested to 800 PSI working pressure.



### Reliable Core Gripper

Securely and confidently remove valve cores for unrestricted flow.



### Vacuum Gauge Port

1/4" side flare to easily connect a vacuum gauge.



Built-in rare-earth magnet for convenient jobsite storage.



Valve Core Removal Tool  
1947967, 1947968

# BUILT TO HANDLE ANY CLIMATE THROWN THEIR WAY.



Manifolds operate as your sidekicks on every job. They need to be durable. They need to not leak. They need to excel in even the most extreme conditions. The hilmor line of Manifolds is ready to be put to work with replaceable stainless steel valve seats and SAE-style O-rings. The list of features goes on and on, but the one that matters most is their ability to withstand all the pressures you encounter — day in and day out.



# 4-VALVE ALUMINUM MANIFOLD

We know that manifolds are your lifeline. So, when we decided to retool the features and design, we were meticulous down to the last detail.



## Extra Confidence

Built to last with a forged aluminum body. Designed to be leak-resistant with replaceable stainless steel valve seats, SAE-style O-rings and a securely seated, large sight glass.



## Quick on the Job

Get faster vacuum pulls with a true 3/8" bore throughout the valve.



## Comfortable Grip

A rubberized handle makes it easier to use in wet and dirty environments.



## Glows in the Dark

Light-activated paint illuminates, so you won't be left in the dark.



## Built-in Pressure Reminder

A pressure reminder allows you to set the pressure ring and reference it later.



Rubberized handles are optimally sized for quick and painless turns.



Front-mounted hose positions give you easier access.



4-Valve Aluminum  
Manifold with Hoses  
1839130

# 4-VALVE ALUMINUM MANIFOLD

## Product Specifications

Item Numbers/Product Descriptions					
Refrigerants	With 60" Hoses and Ball Valve Adapters	Without Hoses	Temp.	Pressure Range Low	Pressure Range High
R410A	1839109 4V410H	1839111 4V410	F/C	-30" HG/300/ 500 psi	0/800 psi
HP22-407C-410A (Heat Pump)	1839128 4V22407410H	1839129 4V22407410		0/800 psi	0/800 psi
R22-404A-410A	1839130 4V22404410H	1839132 4V22404410	F	-30" HG/300/ 500 psi	0/800 psi
Accuracy	Class 1 - 1% Accuracy (full scale)				
Gauge Connection Type	1/8" NPT Male Fitting				
Valve Type	Double O-ring Piston Style				
Valve Seat (Orifice)	Replaceable Stainless Steel (SAE-style straight thread with O-ring)				
Sight Glass	Bonded steel with SAE-style straight thread with O-ring				
Vacuum Port	3/8" full bore (quantity 1)				
Charge Ports	1/4" (quantity 3)				
Hoses Included	1839143 H60BVS4 60" Hoses with Ball Valve Adapters - Set of 4				
Dimensions					
Length	8-7/8"	8-7/8"			
Width	4"	4"			
Height	7-1/8" without hook	7-1/8" without hook			
Weight	7.1 lbs.	3.4 lbs.			



**hilmer**

T1  
96.2  
96.2  
89.2  
°F  
T2



°C/°F



4-Valve Aluminum  
Manifold with Hoses &  
Dual Readout Thermometer  
1839131

# 4-VALVE ALUMINUM MANIFOLD WITH HOSES & DUAL READOUT THERMOMETER

## Product Specifications

Item Numbers/Product Descriptions					
Refrigerants	With 60" Hoses and Ball Valve Adapters		Temp.	Pressure Range Low	Pressure Range High
R410A	1839110	4V410HD	F/C	-30" HG/300/500 psi	0/800 psi
R22-404A-410A	1839131	4V22404410HD	F	-30" HG/300/500 psi	0/800 psi
Accuracy		Class 1 - 1% Accuracy (full scale)			
Gauge Connection Type		1/8" NPT Male Fitting			
Valve Type		Double O-ring Piston Style			
Valve Seat (Orifice)		Replaceable Stainless Steel (SAE-style straight thread with O-ring)			
Sight Glass		Bonded steel with SAE-style straight thread with O-ring			
Vacuum Port		3/8" full bore (quantity 1)			
Charge Ports		1/4" (quantity 3)			
Hoses Included		1839143 H60BVS4 60" Hoses with Ball Valve Adapters - Set of 4			
Thermometer Included		1839106 DROT2TCC Dual Readout Thermometer			
Two Thermocouples Included		1839108 TCC Thermocouple Clamp			
Dimensions					
Length	8-7/8"				
Width	4"				
Height	7-1/8" without hook				
Weight	7.3 lbs.				



# 2-VALVE ALUMINUM MANIFOLD

The rough-and-tumble durability of our 4-Valve with the simplicity of a 2-Valve design.



## Extra Confidence

Built to last with a forged aluminum body. Designed to be leak-resistant with replaceable stainless steel valve seats, SAE-style O-rings and a securely seated, large sight glass.



## Comfortable Grip

A rubberized handle makes it easier to use in wet and dirty environments.



## Easy to Read

Improved graphics and high-contrast colors deliver precise readings at a glance.



## Glow in the Dark

Light-activated paint illuminates, so you won't be left in the dark.



## Built-in Pressure Reminder

A pressure reminder allows you to set the pressure ring and reference it later.



A permanent location for the temperature clamps offers quick and convenient storage.



With a forged aluminum body, it can stand up to the roughest, toughest conditions.



Rubberized handles are optimally sized for easy turns.

2-Valve Aluminum Manifold  
1839134

## Product Specifications

Item Numbers/Product Descriptions					
Refrigerants	Item Numbers	Product Descriptions	Temp.	Pressure Range Low	Pressure Range High
R22-134A-404A	1839126	2V22134404	F	-30" HG/120/350 psi	0/500 psi
R22-404A-410A	1839134	2V22404410	F	-30" HG/300/500 psi	0/800 psi
Accuracy		Class 1 - 1% Accuracy (full scale)			
Gauge Connection Type		1/8" NPT Male Fitting			
Valve Type		Double O-ring Piston Style			
Valve Seat (Orifice)		Replaceable Stainless Steel (SAE-style straight thread with O-ring)			
Sight Glass		Bonded Steel with SAE-style straight thread with O-ring			
Charge Ports		1/4" (quantity 3)			
Dimensions					
Length		8-7/8"			
Width		1-3/4"			
Height		7-1/8" without hook			
Weight		2.5 lbs.			

# 2-VALVE BASIC MANIFOLD

The hilmor 2-Valve Basic Manifold with 60" Hoses provides all the features you've come to expect from a standard manifold, and then some. It has a durable design, improved accessibility and smart functionality.

The 3-1/8" gauges have been optimized for greater readability with improved graphics, high-contrast color and glow-in-the-dark functionality. Sold with hilmor 60" hoses.



### Easy to Read

Improved graphics and high-contrast colors deliver precise readings at a glance.



### Glow in the Dark

Light-activated paint illuminates, so you won't be left in the dark.



### Comfortable Grip

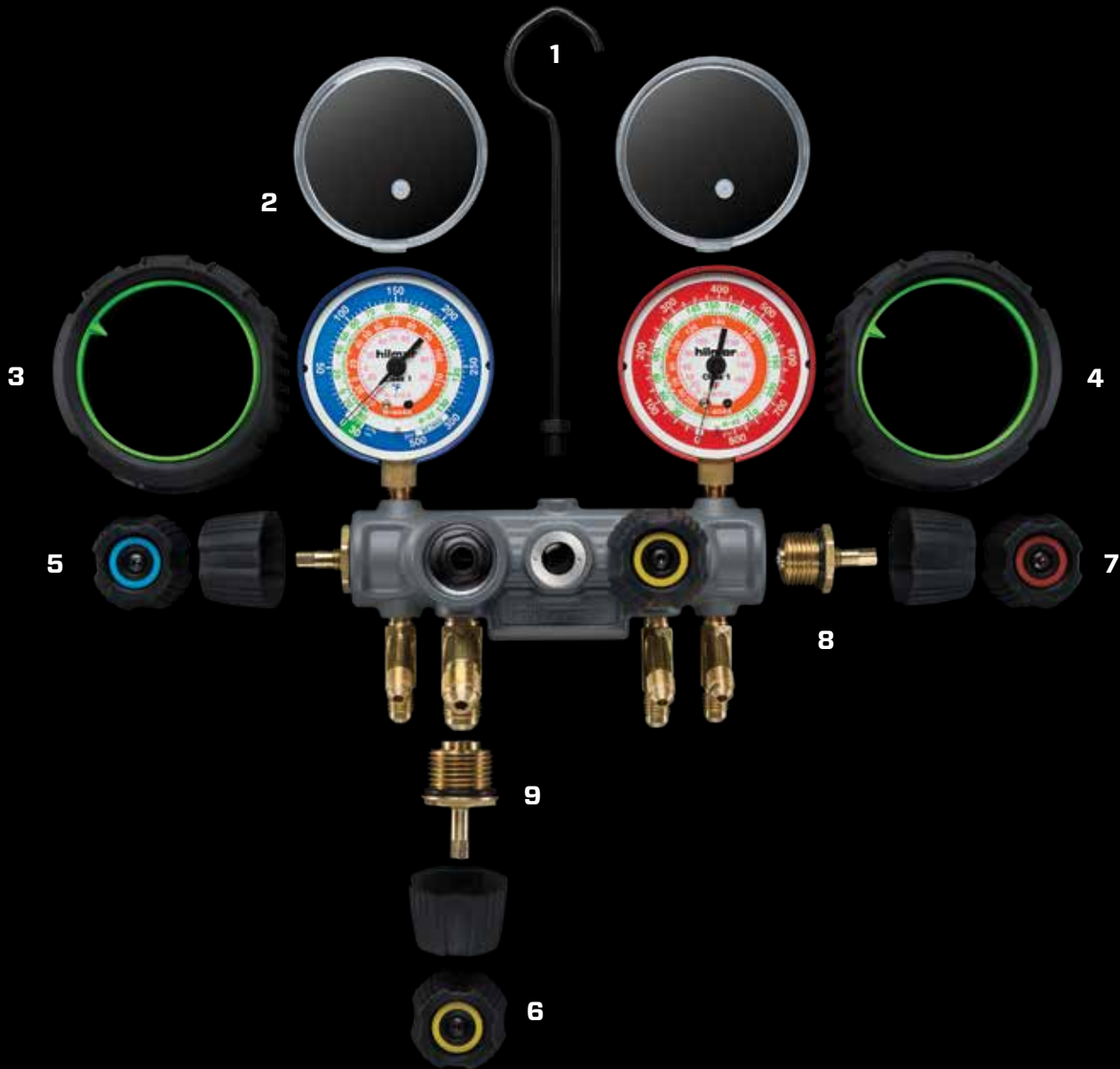
A rubberized handle makes it easier to use in wet and dirty environments.



2-Valve Basic Manifold  
with Hoses  
1932650

## Product Specifications

Item Numbers/Product Descriptions					
Refrigerants	With 60" Hoses		Temp.	Pressure Range Low	Pressure Range High
R410A	1839114	2VB410H	F/C	-30" HG/300/500 psi	0/800 psi
R22-404A-410A	1932650	2VB22404410H	F	-30" HG/300/500 psi	0/800 psi
Accuracy	Class 1 - 1% Accuracy (full scale)				
Gauge Connection Type	1/8" NPT Male Fitting				
Valve Type	Double O-ring Piston Style				
Charge Ports	1/4" (quantity 3)				
Hoses Included	1839153 H60S3 Hose 60" - Set of 3				
Dimensions					
Length	7-1/4"				
Width	3"				
Height	6"				
Weight	3.9 lbs.				



## Replacement Parts

Category	Item Numbers	Product Descriptions	Location #
Manifolds	1932944	AMH Analog Manifold Hook	1
Gauges	1932986	AGL Analog Gauge Lens	2
Gauges	1932947	LAGBR Low Side Analog Gauge Boot w/Ring	3
Gauges	1932948	HAGBR High Side Analog Gauge Boot w/Ring	4
Manifolds	1932949	MVHB Manifold Valve Handle - Blue	5
Manifolds	1932951	MVHY Manifold Valve Handle - Yellow	6
Manifolds	1932950	MVHR Manifold Valve Handle - Red	7
Manifolds	1932945	VSA2 2-Valve Seat Assembly (2-1/4")	8
Manifolds	1932946	VSA4 4-Valve Seat Assembly (3-1/4", 1-3/8")	9

# DUAL READOUT THERMOMETER



## Makes Calculations Easier

The industry's only manifold-compatible compact thermometer with two readings to help simplify the calculation of superheat and subcool.



## Superior Versatility

Use it on any gauge set, or remove it and use it independently.



## Reads Temperatures Quickly

Two easy-to-use, K-style tube-clamp thermocouples get you to the temperature reading quickly.



This thermometer is the first in the industry to attach to any manifold.

## Product Specifications

Item Number	1839106
Product Description	DROT2TCC
Two Thermocouples Included	1839108 TCC Thermocouple Clamp
Batteries	AA x 1 (included)
Battery Life	151 hours
Connection Type	K
Measurement Range	Resolution Accuracy
Temperature	-76°F to 999.9°F .10° F/C +2.0 C°/+3.6°F
Operating Temperature Range	0°C to +50°C (LCD)

## Dimensions

Length	1-3/4"
Width	1-5/8"
Height	3-7/8"
Weight	11 oz.



Dual Readout Thermometer  
1839106

# THERMOCOUPLE CLAMP

Get right to it on up to 1-1/8" tubing with hilmor's Thermocouple Clamp. A K-style connection offers a secure fit and is easy to use with other devices. It is a perfect pairing for the hilmor Dual Readout Thermometer. When the job is done, it is easy to stow it away. Simply wrap the thermocouple wire around the handle, and secure the plug into the clamp.



### Fast, Precise Readings

Gets right to the temperature reading up to 1-1/8" tubing.



### Secure Connection

K-style connection provides a tight fit and easy use with other devices.



### Secure Storage

Stow it away simply by wrapping the thermocouple wire around the clamp and securing the plug.



Protect the thermocouple plug when not in use by wrapping the cord around the handle and plugging into the side socket.

## Product Specifications

Item Number	1839108
Product Description	TCC
Connection Type	K
Accuracy	+-2.0°C/+-3.6°F
Operating Temperature (plastic)	-40°F to 250°F

## Dimensions

Length	5-1/4"
Width	7/8"
Height	3-1/4"
Weight	3 oz.



Attach K-style clamp to an easily accessible spot on the hilmor manifold.



K-style clamp securely attaches to tubing up to 1-1/8" for measurements on the double.



Thermocouple Clamp  
1839108

# FINALLY, THE BRAINS OF YOUR OPERATION CAN TAKE A BUMP TO THE HEAD.



Analog Gauge  
1839092



Analog Gauge  
1839093

# ANALOG GAUGES

You need accurate readings, and you need them at a glance. hilmor gauges were made for just that. Simply choose the gauge you need, and put it to work.

**Tt**

### Easy to Read

Improved graphics and high-contrast colors deliver precise readings at a glance.



### Rugged and Durable

High-impact protective boots and steel construction mean dropping it won't ruin your day.



Forget the flashlight. These gauges are equipped with glow-in-the-dark capabilities.



A pressure reminder allows you to set the pressure ring and reference it later.

## Product Specifications

Item Numbers/Product Descriptions					
Refrigerants	Low-side (Blue)	Pressure Range	High-side (Red)	Temp.	Pressure Range
R410A	1839082 AG410L	-30" HG/300/500 psi	1839083 AG410H	F/C	0/800 psi
R22-134A-404A	1839088 AG22134404L	-30" HG/120/350 psi	1839089 AG22134404H	F	0/500 psi
HP22-407C-410A (Heat Pump)	1839090 AG22407410L	0/800 psi	1839091 AG22407410H	F	0/800 psi
R22-404A-410A	1839092 AG22404410L	-30" HG/300/500 psi	1839093 AG22404410H	F	0/800 psi
Accuracy	Class 1 - 1% Accuracy (full scale)				
Size	3-1/8" (80mm) Gauge				
Fitting	1/8" NPT Male connection				
Included Parts	Protective boot and dial indicator ring				
Dimensions					
Depth	1-3/4"				
Diameter	3-5/8"				
Weight	6 oz.				



# THIS JOB TAKES SOME THICK SKIN.

# LUCKILY, OUR HOSES HAVE IT.



If you can stand the pressure, your hoses should, too. We've rethought and retooled the hoses you use every day with smart features like an extra abrasion-resistant layer for superior protection in tough conditions. All of our Hoses are rated for 800 PSI working pressure to work with the newest high-pressure refrigerants. Simply select the Hose and Ball Valves you need. You can choose from Hoses and Ball Valve Adapters individually, or buy them as a set.

# REFRIGERATION HOSES

Hilmor 36" and 60" Hoses are designed with smart features including an extra abrasion-resistant layer for tough environments.



### Superior Protection

An extra abrasion-resistant layer for the tough environments of HVAC/R.



### Handles High Pressure

Rated for 800 PSI working pressure to work with high-pressure refrigerants.



36" Vacuum Hose  
1839159



## Product Specifications

### 60" Hoses

Item Numbers	Product Descriptions	Diameter
1839150	H60R Hose 60" - Red	1/4"
1839151	H60B Hose 60" - Blue	1/4"
1839152	H60Y Hose 60" - Yellow	1/4"
1839153	H60S3 Hose 60" - Set of 3	1/4"
1839154	H6038 Hose 60" - VAC	3/8"

Maximum Allowable Working Pressure 800 PSI

Burst Pressure 4000 PSI

Operating Temperature -20°F to +180°F

End Connection Straight by 45 degree

### Dimensions

Length 60"  
Weight 8 oz.

### 36" Hoses

Item Numbers	Product Descriptions	Diameter
1839156	H36B Hose 36" - Blue	1/4"
1839158	H36S3 Hose 36" - Set of 3	1/4"
1839159	H3638 Hose 36" - VAC	3/8"

Maximum Allowable Working Pressure 800 PSI

Burst Pressure 4000 PSI

Operating Temperature -20°F to +180°F

End Connection Straight by 45 degree

### Dimensions

Length 36"  
Weight 6 oz.

## Replacement Parts

Category	Item Numbers	Product Descriptions	Location #
Hoses	1932984	HGL Hose Gaskets (3/8", Pack of 10)	1
Hoses	1932982	HGS Hose Gaskets (1/4", Pack of 12)	2
Hoses	1932985	HTD Hose Threaded Depressors, Pack of 6	3

# REFRIGERATION HOSES WITH BALL VALVE EXTENSIONS

Rated for 800 PSI working pressure to work with high-pressure refrigerants. Includes an easy-turn valve for added control of refrigerant loss.



### Superior Protection

An extra abrasion-resistant layer for the tough environments of HVAC/R.



### Handles High Pressure

Rated for 800 PSI working pressure to work with high-pressure refrigerants.



60" Refrigeration Hoses with Ball Valve Extensions  
1839143

## Product Specifications

Item Numbers	Product Descriptions	Length	Diameter	Weight
1839140	H60BVR Hose Ball Valve Ext - Red	60"	1/4"	15 oz.
1839141	H60BVB Hose Ball Valve Ext - Blue	60"	1/4"	15 oz.
1839142	H60BVY Hose Ball Valve Ext - Yellow	60"	1/4"	15 oz.
1839143	H60BVS4 Hose Ball Valve Ext - Set of 4	60"	1/4" & 3/8"	3.8 lbs.
1839144	H60BV38 Hose Ball Valve Ext - VAC	60"	3/8"	1.3 lbs.
1935930	H72BVS3 Hose Ball Valve Ext - Set of 3	72"	1/4"	3.0 lbs.
1936001	H72BVBV Hose Ball Valve Ext - VAC	72"	3/8"	1.5 lbs.
1936002	H72BVS4 Hose Ball Valve Ext - Set of 4	72"	1/4" & 3/8"	4.5 lbs.

Maximum Allowable Working Pressure

800 PSI

Burst Pressure

4000 PSI

Operating Temperature

-20°F to +180°F

Hoses End Connection

Straight by Straight

Ball Valve Extension Connection

Straight by 45 degree

# BALL VALVE EXTENSIONS

We all know that controlling refrigerant loss on the jobsite is a big deal. And the hilmor Ball Valve Extension is here to help. It is designed with an extra 6" of hose for additional length.



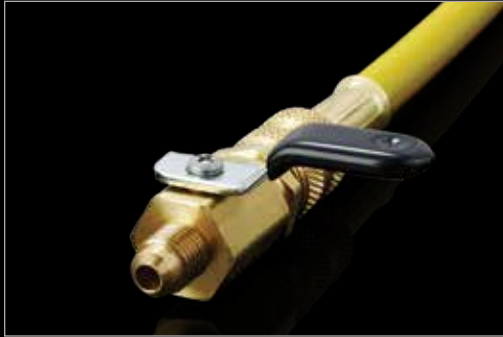
## Superior Protection

An extra abrasion-resistant layer for the tough environments of HVAC/R.



## Handles High Pressure

Rated for 800 PSI working pressure to work with high-pressure refrigerants.



Knob turns quickly and easily to restrict flow from hoses.

## Product Specifications

Item Numbers	Product Descriptions	Diameter
1839148	BVR Ball Valve Ext - Set of 3	1/4"
1839149	BVB Ball Valve Ext - VAC	3/8"

Maximum Allowable Working Pressure 800 PSI

Burst Pressure 4000 PSI

Operating Temperature -20°F to +180°F

End Connection Straight by 45 degree

### Dimensions

Length 8"

Weight 4 oz.



# REFRIGERATION HOSES WITH BALL VALVE ENDS

Our retooled hoses includes an easy turn valve for added control of refrigerant loss. Features an extra abrasion-resistant layer for superior protection in tough conditions. All of our hoses are rated for 800 PSI working pressure to work with the newest high-pressure refrigerants.



## Minimize Refrigerant Loss

Easy-turn valve for added control of refrigerant loss.



## Handles High Pressure

Rated for 800 PSI working pressure to work with high-pressure refrigerants.



## Small Space Capable

A compact design allows it to be used even in cramped spaces.

## Product Specifications

Item Number	Product Descriptions	Diameter
1935917	H48BVES3 Set of 3	1/4"
1935918	H48BVEBV Vacuum	3/8"

Maximum Allowable Working Pressure 800 PSI

Burst Pressure 4000 PSI

Operating Temperature -20° F to 180° F

End Connection Straight by 45°

## Dimensions

Weight 1.8 lbs. 1 lb.



Ball Valve Ends  
H48BVES3

# STAINLESS STEEL EVACUATION HOSES

When pulling a vacuum, use hilmor Stainless Steel Evacuation Hoses to help prevent permeation and outgassing for a faster evacuation.

## Product Specifications

Item Numbers	Product Descriptions	Length	Diameter	Connections
1950568	14SSH36	36"	1/4"	1/4" x 1/4"
1950569	38SSH36	36"	3/8"	1/4" x 3/8"
1950570	14SSH60	60"	1/4"	1/4" x 1/4"
1950651	38SSH60	60"	3/8"	1/4" x 3/8"
Maximum Working Pressure		800PSI		
Burst Pressure		4000PSI		



Stainless Steel Evacuation Hoses  
1950568, 1950569, 1980570, 1950651

# IT TAKES BRAINS AND BRAWN TO BEND TUBES.



Compact Bender Kit with Reverse  
Bending Attachment  
1926598

# COMPACT BENDER KITS

## 1839032 Compact Bender Kit

Body and crossbar for 1/4" to 7/8", 1/4", 5/16", 3/8", 1/2", 5/8", 3/4" and 7/8" mandrels.

## 1926598 Compact Bender Kit with Reverse Bending Attachment

Body and crossbar for 1/4" to 7/8", 1/4", 5/16", 3/8", 1/2", 5/8", 3/4", 7/8" mandrels and Reverse Bending Attachment.



### Simple Setup

Universal crossbar and color-coded mandrels make identifying and changing sizes quick and easy.



### One-handed Operation

A ratcheting mechanism and innovative release lever allow for bending with one hand.



### Small Space Capable

A compact design allows it to fit where others can't.

## Product Specifications

Item Numbers	1839032	1926598
Product Descriptions	CBK	CBKRB
Tube Sizes (O.D.)	1/4", 5/16"	

### Dimensions

Length	16-3/8"	16-3/8"
Width	12-1/4"	12-1/4"
Height	3-1/4"	3-1/4"
Weight	8.8 lbs.	10.8 lbs.

### Replacement Parts

Descriptions	Item Number
CBRBM Rev Bend Att	1890999

Tube Materials	Soft Tubing Only Copper, Steel, Aluminum, Brass
----------------	--



A reverse bending attachment for bends in the opposite direction.



A ratcheting lever gives you the brawn to bend tubes with one hand.



A quick-release button allows you to free the tube with ease and without damage.



A locking slider keeps the bender compact for storage and transport.



# TRI-TUBE BENDERS

From start to final bend, the hilmar Tri-Tube Bender has you covered. It just takes simple sizing.



### Simple Sizing

Indicators in the handles can help you find the correct tube size.



### Quick Identification

Color-coded to help you spot the right tube size and align in the groove.



### Precise Angles

Markings on the side help create up to 180° bends.

## Product Specifications

Item Numbers	1839026	1839027
Product Descriptions	TB1438	TB1412
Tube Sizes (O.D.)	1/4", 5/16", 3/8"	1/4", 3/8", 1/2"
<b>Dimensions</b>		
Length	14"	19"
Width	2-1/4"	3-1/2"
Height	3-1/4"	4-1/4"
Weight	1.1 lbs.	2.4 lbs.
Tube Materials	Soft Tubing Only Copper, Steel, Aluminum, Brass	



Tri-Tube Bender  
1839027

Tri-Tube Bender  
1839026

# SPRING BENDERS

Getting an accurate bend by hand isn't always easy. But, our Spring Benders can help simplify things. Four different benders are included to fit 1/4", 3/8", 1/2" and 5/8" tubing. Simply slip the Spring Bender over soft copper or aluminum tubing, and count on the spring to keep the tube from kinking.

## Product Specifications

Item Number	1839031			
Product Description	SB 4PC Set			
Tube Sizes (O.D.)	1/4"	3/8"	1/2"	5/8"
<b>Dimensions</b>				
Size	1/4"	3/8"	1/2"	5/8"
Length	11-1/3"	11-1/3"	11-1/3"	11-1/3"
Weight	5 oz.	5 oz.	5 oz.	5 oz.
Tube Materials	Soft Tubing Only Copper, Steel, Aluminum, Brass			



Spring Benders  
1839031

# GET IN. GET OUT. GET ON TO THE NEXT JOB.



Flaring and swaging is a big part of the job. That's why we made a big effort to guarantee you get a precise flare and swage every time. Convenience and comfort both come standard throughout hilmor's full line of flaring and swaging tools. Simply choose the tool that fits your needs, and get ready to conquer your next job.



Orbital Flare  
1838952

# ORBITAL FLARE

The hilmor Orbital Flare was designed to produce quality flares – again and again. A tube-stop arrow allows precise positioning and placement so you can keep that nickel in your pocket. Plus, a clutch mechanism stops the flare to eliminate cracking the tube.



### Precise Flares, Every Time

An off-center mounted cone spins on an axis to effectively produce quality flares.



### No Cracked Tubes

A clutch mechanism stops the flaring when the job is done.



### Simple Setup

A clothespin-inspired, spring-loaded block grips the tube securely.



### Easy to Position

A tube-stop arrow slides to set correct height and positioning while ball detents allow for easy flaring cone alignment.

## Product Specifications

Item Number	1838952
Product Description	FTO
Tube Sizes (O.D.)	3/16", 1/4", 5/16", 3/8", 1/2", 5/8", 3/4"
<b>Dimensions</b>	
Length	8-1/2"
Width	4-5/8"
Height	5-1/4"
Weight	3.8 lbs.
Tube Materials	Soft Tubing Only Copper, Steel, Aluminum, Brass
Flare Type	45 degree



A clutch mechanism stops the flare when the job is done to eliminate cracking the tube.



An off-center mounted cone helps to uniformly shape the tube.



Orbital Flare  
1838952

# ORBITAL FLARE KIT WITH TUBING CUTTER AND DEBURRING TOOL

The hilmer Orbital Flare Kit comes with everything you need to produce quality flares – again and again. The kit includes hilmer's Large Diameter Tubing Cutter (item # 1885384) for easy kink-free cuts, a Pocket Size Deburring Tool (item # 1891258) to smooth things over and, of course, our industry-leading Orbital Flare (item # 1838952).



### Storage

Kit included for convenient storage.



### Precise Flares, Every Time

An off-center mounted cone spins on an axis to effectively produce quality flares.



### No Cracked Tubes

A clutch mechanism stops the flaring when the job is done.



### Accurate Cutting

A unique, four-roller tracking system keeps the tube from threading.



### Professional Deburring

Conveniently deburr tubes and fittings 1/4" nominal and larger.

## Product Specifications

Item Number	1937685
Product Description	FTOK
Tube Sizes (O.D.)	3/16", 1/4", 5/16", 3/8", 1/2", 5/8", 3/4"
Tube Materials	Soft Tubing Only Copper, Steel, Aluminum, Brass

## Dimensions

Length	9"
Width	12-1/2"
Height	2-1/2"
Weight	5.8 lbs.

## Kit Contents

Orbital Flare, Large Diameter Tubing Cutter, Pocket Size Deburring Tool



Orbital Flare Kit  
1937685

# LARGE BASIC FLARE

The hilmor Large Basic Flare has all the advantages of hilmor flaring tools with the bulked-up size to handle 3/4" to 1-1/8" tubes. And it can fit into spaces other flaring and swaging tools can't.



## Durable

The cast steel yoke and hardened flaring bar are made to be knocked around.



## Control

Steel wing nuts make it easy to hold pipe secure.



## Quality Flares

An extra-long handle provides more leverage and self-centers for a consistent quality flare.

## Product Specifications

Item Number	1838955
Product Description	FTL
Tube Sizes (O.D.)	3/4", 7/8", 1-1/8"
<b>Dimensions</b>	
Length	7"
Width	6"
Height	5-1/4"
Weight	3.7 lbs.
Tube Materials	Soft Tubing Only Copper, Steel, Aluminum, Brass
Flare Type	45 degree



Large Basic Flare  
1838955

# BASIC FLARE

The hilmor flaring tools are the no-muss, no-fuss way to flare. Our Basic Flare handles 1/8" to 3/4" tubes.



## Durable

The cast steel yoke and hardened flaring bar are made to be knocked around.



## Control

Steel wing nuts make it easy to hold pipe secure.



## Quality Flares

An extra-long handle provides more leverage and self-centers for a consistent quality flare.

## Product Specifications

Item Number	1838956
Product Description	FT1834
Tube Sizes (O.D.)	1/8", 3/16", 1/4", 5/16", 3/8", 1/2", 5/8", 3/4"
<b>Dimensions</b>	
Length	8-3/4"
Width	5-1/4"
Height	4-1/4"
Weight	2.4 lbs.
Tube Materials	Soft Tubing Only Copper, Steel, Aluminum, Brass
Flare Type	45 degree



Basic Flare  
1838956



# QUICK-ENGAGE FLARE AND SWAGE KIT

Extra appendages are hard to come by these days. Instead, opt for the all-new hilmer Quick-Engage Flare and Swage. Simple setup, precise positioning and a secure hold allow you to quickly conquer and move on to the next job.



## Less Work

Allows for faster flares and swages because it requires fewer rotations.



## Simple Setup

A clothespin-inspired, spring-loaded block grips the tube securely.



## Easy to Position

A tube-stop arrow slides to set correct height and positioning, while ball detents allow for easy flaring cone alignment.

## Product Specifications

Item Number	1838947
Product Description	FS
Tube Sizes (O.D.)	3/16", 1/4", 5/16", 3/8", 1/2", 5/8", 3/4"
<b>Dimensions</b>	
Length	8-1/2"
Width	4-5/8"
Height	7-1/2"
Weight	3.5 lbs.
Tube Materials	Soft Tubing Only Copper, Steel, Aluminum, Brass
Flare Type	45 degree

## Kit Contents

1 Bar, 1 Quick-Engage Yoke, 1 Flare Cone 3/16" to 3/4",  
5 Swage Heads



Ball detents ensure proper and precise alignment to guarantee a perfect flare or swage every time.



Push down the yoke and with fewer rotations, you get a precise flare or swage.



An innovative spring-loaded block holds the tube firmly in place.



Quick-Engage Flare and Swage  
1838947

# LARGE FLARE/SWAGE

When you need a precise, quality flare or swage, the hilmor Large Flare/Swage delivers. Its compact design allows it to fit where others can't. And, with a long handle for additional leverage, it can help give you a leg up on any job.



## Durable

The cast steel yoke and hardened flaring bar are made to be knocked around.



## Control

Steel wing nuts make it easy to hold pipe secure.



## Small Space Capable

A compact design allows it to be used even in cramped spaces.



## Quality Flares

An extra-long handle provides more leverage and self-centers for a consistent quality flare.

## Product Specifications

Item Number 1838948

Product Description FSL

Tube Sizes (O.D.) 3/4", 7/8", 1-1/8"

### Dimensions

Length 7"  
Width 6"  
Height 6"  
Weight 6.4 lbs.

Tube Materials Soft Tubing Only  
Copper, Steel, Aluminum, Brass

Flare Type 45 degree



Easily changeable swage heads are made for 3/4", 7/8" and 1-1/8" tubing.



Large Flare/Swage  
1838948

# BASIC FLARE / SWAGE KIT

The Hilmer Basic Flare/Swage Kit has the no-muss, no-fuss tools to flare AND swage tubes in a variety of sizes. The small Basic Flare bar handles 1/8" to 7/16" tubes, while the large Basic Flare bar helps you take on 1/2" to 3/4" tubes. Swage head attachments for sizes 1/8" to 3/4" make an entirely new tool for tube working.



## Durable

The cast steel yoke and hardened flaring bars are made to be knocked around.



## Control

Steel wing nuts make it easy to securely hold tube.



## Small Space Capable

A compact design allows it to be used even in cramped spaces.



## Quality Flares

An extra-long handle provides more leverage and self-centers for a consistent quality flare.

## Product Specifications

Item Number	1937684
Product Description	FSB
Tube Sizes (O.D.)	1/8", 3/16", 1/4", 5/16", 3/8", 7/16", 1/2", 5/8", 3/4"
Tube Materials	Soft Tubing Only; Copper, Steel, Aluminum, Brass
Flare Type	45 degree

## Dimensions

Length	9"
Width	12-1/2"
Height	2-1/2"
Weight	5.0 lbs.

## Kit Contents

2 Bars, 1 Basic Flare/Swage Yoke, 1 Flaring Head, 5 Swage Heads



Basic Flare/Swage Kit  
1937684

# NO SWEAT. NO STRAIN. JUST PICTURE-PERFECT SWAGES.



At hilmar, we've built our swaging tools around the way you work. We've retooled the design to make swaging tools much more convenient and comfortable to use. And our tools deliver. Each one is made to be precise.



Compact Swage Tool  
1839015 and 1964041

# COMPACT SWAGE TOOL KIT

The new hilmor Compact Swage Tool is taking swaging to the next level. It has the power to swage 2-1/8" tubing and the control to swage 1/4" tubing without a crack. With its small, pistol-shape design, it can fit in the smallest of spaces. This proprietary design can reduce on-the-job fatigue with its easy setup and one-handed operation made possible by an innovative hydraulic mechanism and release button. It's even equipped for multiple sizes.



### Picture-perfect Swaging

Simply select the correct head, place it on the tool and make a quality swage.



### Less Effort, More Control

The power to swage 1-5/8" tubing and the control to swage 5/16" without splitting the tube.



### Small Space Capable

A compact design allows it to be used even in cramped spaces.



### One-handed Operation

The lever mechanism and release button allow for one-handed swaging without the fatigue.



Compact Swage Tool Kit  
1839015

## Product Specifications

### Compact Swage Tool Kit

Item Number 1839015

Product Description CS

Kit Contents 3/8", 1/2", 5/8", 3/4", 7/8" Expander Heads, Deburrer, Compact Swage Tool

Tube Sizes (O.D.) 3/8", 1/2", 5/8", 3/4", 7/8"

### Dimensions

Length 9"

Width 1-3/4"

Height 5"

Weight 8.5 lbs

### Expander Heads & Replacement Parts

Item Numbers	Descriptions	Sizes
1964042	CSEH14 Expander Head	1/4"
1839016	CSEH516 Expander Head	5/16"
1839017	CSEH38 Expander Head	3/8"
1839018	CSEH12 Expander Head	1/2"
1839019	CSEH58 Expander Head	5/8"
1839020	CSEH34 Expander Head	3/4"
1839021	CSEH78 Expander Head	7/8"
1839022	CSEH118 Expander Head	1-1/8"
1839023	CSEH138 Expander Head	1-3/8"
1839024	CSEH158 Expander Head	1-5/8"
1964043	CSEH218 Expander Head	2-1/8"
1839025	CSB Compact Swage Body Kit	N/A
1891258	Pocket Size Deburring Tool	N/A

Tube Materials Soft Tubing Only, Copper, Steel, Aluminum, Brass

Recommended Replacement Hydraulic Fluid HV-15

Recommended Expander Head Lubricant NLGI1 or NLGI2

# DELUXE COMPACT SWAGE TOOL KIT

Thoughtfully designed to fit into the smallest of spaces, the Hilmer Compact Swage Tool can knock out the picture-perfect swage in just one shot. An innovative hydraulic mechanism and release button let you take care of any job single-handedly.



### Picture-perfect Swaging

Simply select the correct head, place it on the tool and make a quality swage.



### One-handed Operation

The lever mechanism and release button allow for one-handed swaging without the fatigue.

## Product Specifications

### Deluxe Compact Swage Tool Kit

Item Number	1964041
Product Description	DCS
Deluxe Kit Contents	1/4", 5/16", 3/8", 1/2", 5/8", 3/4", 7/8", 1-1/8", 1-3/8", 1-5/8" Expander Heads, Pocket Size Deburring Tool, Compact Swage Tool
Tube Sizes (O.D.)	1/4", 5/16", 3/8", 1/2", 5/8", 3/4", 7/8", 1-1/8", 1-3/8", 1-5/8"

### Dimensions

Length	9"
Width	1-3/4"
Height	5"
Weight	8.5 lbs

### Additional Expander Heads

Item Numbers	Descriptions	Sizes
1964042	CSEH14 Expander Head	1/4"
1964043	CSEH218 Expander Head	2-1/8"



Deluxe Compact Swage Tool Kit  
1964041



# PUNCH SWAGE SET

Get the sizes you need, right when you need them, with the hilmor 5-piece Punch Swage Set. Punches are available in a set with 1/4", 5/16", 3/8", 1/2" and 5/8".



Punch Swage Set  
1839008

## Product Specifications

Item Number	1839008				
Product Description	S1458				
Tube Sizes (O.D.)	1/4"	5/16"	3/8"	1/2"	5/8"
<b>Dimensions</b>					
Size	1/4"	5/16"	3/8"	1/2"	5/8"
Diameter	1/2"	2/3"	2/3"	7/8"	7/8"
Height	3"	3"	3"	3-3/4"	3-3/4"
Weight	3 oz.	3 oz.	3 oz.	3 oz.	3 oz.
Tube Materials	Soft Tubing Only Copper, Steel, Aluminum, Brass				

# MULTI-SWAGE PUNCH

One punch. Multiple tube sizes. The hilmor Multi-Swage Punch is designed to fit 1/4" to 5/8" tubes. Made of steel and chrome-coated for a durable design with less friction against the tube.



The Multi-Swage Punch tool is intelligently designed with a broader base to reduce missed hits.

## Product Specifications

Item Number	1839009
Product Description	MS
Tube Sizes (O.D.)	1/4" to 5/8" (1/4", 5/16", 3/8", 1/2", 5/8")
<b>Dimensions</b>	
Diameter	7/8"
Height	5-1/4"
Weight	6 oz.
Tube Materials	Soft Tubing Only Copper, Steel, Aluminum, Brass



Multi-Swage Punch  
1839009

# CUT TIME, HARD WORK AND EXCESS TUBING.



Trim back on the unnecessary complexities of the job with hilmor's new line of tubing cutters. They're ruggedly durable and designed to slice through copper, PEX and PVC tubing like it's their job. Whether you're up on a ladder or stuck in a crawl space, hilmor tubing cutters will perform time and time again.



Ratcheting Plastic Tubing Cutter  
2-3/8" MAX OD  
1885395

# SMALL DIAMETER TUBING CUTTERS

When you're in a tight space, this tool can definitely cut it. hilmor's ruggedly durable Small Diameter Tubing Cutters offer precision cuts with minimal burrs.



## Rugged and Durable

An ergonomic, cast-zinc body and shock-resistant steel wheel reduce burrs while increasing life and durability.



## Small Space Capable

Compact design allows this tool to fit where others can't.



## Maximum Protection

A full-stop threading system offers maximum protection for cutting wheels.



## Precision Flare Cutting

A flare-cutting groove allows for precision removal of material. Item 1885383 only.



## Spare Blade Storage

A bonus blade comes with the tool and can be stored easily in the handle. Items 1885382 & 1885383 only.

## Product Specifications

Item Numbers	1885381	1885382
Product Descriptions	TC1858	TC181
Diameters	1/8" - 5/8"	1/8" - 1"

### Dimensions

Length	1-3/8"	1-3/4"
Width	3/4"	3/4"
Height	1-3/4"	2-3/8"
Weight	4 oz.	6 oz.

Item Number	1885383
Product Description	TC18118 TC
Diameter	1/8" - 1-1/8"

### Dimensions

Length	2"
Width	1"
Height	3"
Weight	8 oz.



Small Diameter Tubing Cutters  
1/8" - 5/8", 1/8" - 1", 1/8" - 1-1/8"  
1885381, 1885382, 1885383

# LARGE DIAMETER TUBING CUTTERS

This cutter can talk the talk without walking the walk. hilmor's Large Diameter Tubing Cutters feature a four-roller tracking system to keep the tube from threading. All the while, a shock-resistant steel wheel cuts through the tube like a knife through butter.



### Rugged and Durable

An ergonomic, cast-zinc body and shock-resistant steel wheel reduce burrs while increasing life and durability.



### Precision Flare Cutting

A flare-cutting groove allows for precision removal of material.



### Maximum Protection

A full-stop threading system offers maximum protection for cutting wheels.



### Spare Blade Storage

A bonus blade comes with the tool and can be stored easily in the handle.



### Accurate Cutting

A unique, four-roller tracking system keeps the tube from threading.



### Professional Deburring

Conveniently deburr tubes with a replaceable machinist's reamer.



### Quick on the Job

Quick-action ratcheting helps you get the job done in a snap. Item 1885385 only.

## Product Specifications

Item Numbers	1885384	1885385
Product Descriptions	TC18138	TC18134
Diameters	1/8" - 1-3/8"	1/8" - 1-3/4"

### Dimensions

Length	2-3/4"	3"
Width	1-3/4"	1-3/4"
Height	6-1/4"	7-7/8"
Weight	1.4 lbs.	1.7 lbs.

### Accessories

Item Number	1885386
Product Description	Small Tubing Cutter Wheels 2PK Fits hilmor Tubing Cutters: 1885381, 1885382
Item Number	1885387
Product Description	Tubing Cutter Wheels 2PK Fits hilmor Tubing Cutters: 1885383, 1885384, 1885385
Item Number	21024TCD
Product Description	Replacement Deburrer for 1885384 and 1885385



Large Diameter Tubing Cutters  
1/8"-1-3/8" and 1/8"-1-3/4"  
1885384, 1885385

# PLASTIC TUBING CUTTER

We've cut out the unnecessary complexity so you can cut plastic. hilmor's Plastic Tubing Cutter gets the job done with ease. Simple design and intuitive features allow you to get a handle on any cut.



## Rugged and Durable

An ergonomic, cast-aluminum body and stainless steel blade increase life and durability.



## Comfortable Grip

A rubberized handle makes it easier to use in wet and dirty environments.



## Easy to Open and Close

A conveniently positioned locking latch allows for true one-handed operation.

## Product Specifications

Item Number	1885388
Product Description	PTC Plastic Tube Cutter
Diameter	1-5/16" MAX OD

### Dimensions

Length	11"
Width	5-1/2"
Height	1-2/5"
Weight	13 oz.

### Replacement Blade

Item Number	1885390
Product Description	PTCRB Plastic TC Rep Blade



A stainless steel blade gives you the strength and precision for any cut.



Plastic Tubing Cutter  
1-5/16" MAX OD  
1885388

# RATCHETING PLASTIC TUBING CUTTERS



## Rugged and Durable

An ergonomic, cast-aluminum body and stainless steel blade increase life and durability.



## Comfortable Grip

A rubberized handle makes it easier to use in wet and dirty environments.



## Easy to Open and Close

A conveniently placed release button allows for true one-handed operation, while a locking tab secures the blade in place.

Ratcheting Plastic Tubing Cutter  
2-3/8" MAX OD  
1885395



## Rugged and Durable

An ergonomic, cast-aluminum body and high-carbon steel blade increase life and durability.



## Easy to Open

Simply pull both handles apart to quickly start the next cut.

## Product Specifications

Item Number	1885393
Product Description	RPTC158
Diameter	1-5/8" MAX OD

### Dimensions

Length	9"
Width	1-1/8"
Height	4-1/8"
Weight	1.0 lbs.

### Replacement Blade

Item Number	1885394
Product Description	RPTC158RB Rat TC Rep Blade

Ratcheting Plastic Tubing Cutter  
1-5/8" MAX OD  
1885393



## Product Specifications

Item Number	1885395
Product Description	RPPTC238
Diameter	2-3/8" MAX OD

### Dimensions

Length	13-1/8"
Width	1-1/3"
Height	6"
Weight	2.5 lbs.

### Replacement Blade

Item Number	1885396
Product Description	RPTC238RB Rat TC Rep Blade

# ALL THE TOOLS IT TAKES TO TACKLE DUCT WORK.



Whether you need to bend, crimp, pierce or cut sheet metal or duct work, our family of Sheet Metal and Duct Tools are up for the challenge.





3" Hand Seamer  
1891185

# AVIATION SNIPS

Cut sheet metal, duct, stainless steel. Oh, and time. Hilmor Aviation Snips feature color-coded handles that make finding the right tool quick and easy. Plus, they have a comfortable grip and durable blades.



### Rugged and Durable

High-carbon steel blades and a reinforced chrome silicon spring increase life and durability.



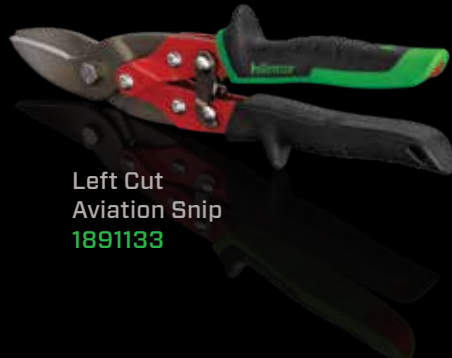
### Quick Identification

Color-coded handle inserts and splines make identification simple.



### Comfortable Grip

Over-molded handles reduce hand fatigue and won't slip or twist.



Left Cut Aviation Snip  
1891133



Right Cut Offset Aviation Snip  
1891138



Bulldog Aviation Snip  
1891136

## Product Specifications

### Aviation Snips

#### Item Numbers

1891133    1891134    1891135    1891172

#### Product Descriptions

SNIPAL    SNIPAR    SNIPAS    SNIPASLR

#### Capacity

CRS	18ga	18ga	18ga	18ga
SS	22ga	22ga	22ga	22ga

#### Dimensions

Length	10-3/8"	10-3/8"	10-3/8"	10-3/8"
Width	3-1/2"	3-1/2"	3-1/2"	9-1/2"
Height	7/8"	7/8"	7/8"	9-1/2"
Weight	1.1 lbs.	1.1 lbs.	1.1 lbs.	3.3 lbs.

#### Cutting Direction



3PC Set

### Bulldog & Offset Aviation Snips

#### Item Numbers

1891136    1891137    1891138

#### Product Descriptions

SNIPAB    SNIPOL    SNIPOR

#### Capacity

CRS	16ga	18ga	18ga
SS	20ga	22ga	22ga

#### Dimensions

Length	9-1/2"	10-1/4"	10-1/4"
Width	3-1/2"	3-1/4"	3-1/4"
Height	7/8"	1"	1"
Weight	1.0 lbs.	1.1 lbs.	1.1 lbs.

#### Cutting Direction



Color-coded handle inserts for quick identification.



Lock for quick and easy storage.

# TINNER SNIPS

Straight cuts. Curved cuts. Left and right. That's what a rubberized handle and hot-drop forged steel blades can do for you. The hilmor Tinner Snips get it done.



### Rugged and Durable

Precision-formed, hot-drop forged steel blades increase life and durability.



### Comfortable Grip

Over-molded handles reduce hand fatigue and won't slip or twist.

12" Tinner Snip  
1891175



# ALUMINUM HANDLE SNIP

If longer, cleaner cuts are your thing, this pair of snips is for you. It's lightweight, aluminum composition makes this tool easy to handle and comfortable in your hands.



### Rugged and Durable

Lightweight aluminum construction and replaceable blades increase life and durability.



### Less Work

A 3-1/2" cut length requires fewer cuts to complete the job.



### Added Versatility

Use either right or left hand to easily make cuts.



Aluminum Handle Snip  
1891173

## Product Specifications

Item Numbers 1891175

Product Descriptions SNIP12T

Sizes 12"

Capacity  
CRS 20ga  
SS 22ga

### Dimensions

Length 12-3/8"  
Width 4-3/8"  
Height 1/2"  
Weight 1.5 lbs.

Cutting Direction



## Product Specifications

Item Number 1891173

Product Description SNIP13AH

Capacity  
CRS 24ga  
SS 28ga

### Dimensions

Length 13"  
Width 4"  
Height 1/2"  
Weight 1.2 lbs.

Cutting Direction



### Replacement Blade

Item Number 1891174

Description SNIP13AHRB  
13" AL HAND REP BLADE

# PIPE DUCT CUTTER

The hilmore Pipe Duct Cutter offers rugged steel blades and a reinforced spring to cut through up to 18-gauge sheet metal and 22-gauge stainless steel with ease.



### Rugged and Durable

High-carbon steel blades and a reinforced chrome silicon spring increase life and durability.



### Comfortable Grip

Over-molded handles reduce hand fatigue and won't slip or twist.



### Pipe Duct Cutter

For cutting metal pipe and duct.

## Product Specifications

Item Number	1891189
-------------	---------

Product Description	SMTPCD
---------------------	--------

Capacity	
CRS	18ga
SS	22ga

### Dimensions

Length	10-1/2"
Width	3"
Height	7/8"
Weight	1.2 lbs.



Pipe Duct Cutter  
1891189

# V-NOTCHER

This tool puts the V-notch in HVAC/R. It's perfect for making clean 30° V-shaped cuts in sheet metal without distorting or crimping the material.



### Rugged and Durable

High-carbon steel blades and a reinforced chrome silicon spring increase life and durability.



### Comfortable Grip

Over-molded handles reduce hand fatigue and won't slip or twist.



### V-Notcher

Cuts V-shaped notch in sheet metal.

## Product Specifications

Item Number	1891180
-------------	---------

Product Description	SMTVN1
---------------------	--------

Capacity	
CRS	18ga
SS	22ga

### Dimensions

Length	9-1/4"
Width	3"
Height	7/8"
Weight	1.2 lbs.



V-Notcher  
1891180

# SNAP LOCK PUNCH

You've heard the saying. A screw is temporary, but the Snap Lock Punch is forever. This tool can join sheet metal, duct or pipe in a snap for a hold that lasts a lifetime.



### Rugged and Durable

Stainless steel blades and a reinforced chrome silicon spring increase life and durability.



### Comfortable Grip

Over-molded handles reduce hand fatigue and won't slip or twist.



### Snap Lock Punch

For joining sheet metal, duct and pipe.

## Product Specifications

Item Number	1891182
Product Description	SMTSLP
Capacity	
CRS	18ga
SS	22ga

### Dimensions

Length	8-7/8"
Width	3"
Height	7/8"
Weight	1.1 lbs.



Snap Lock Punch  
1891182

# HAND CRIMPERS

A crimping tool that won't cramp your style. Or your hand. hilmor Hand Crimpers come standard with contoured rubber grips that fit comfortably in your hands. Happy crimping!



### Rugged and Durable

High-carbon steel blades and a reinforced chrome silicon spring increase life and durability.



### Comfortable Grip

Over-molded handles reduce hand fatigue and won't slip or twist.



### Hand Crimper

For crimping round metal pipe.

## Product Specifications

Item Numbers	1891186	1891187
Product Descriptions	SMTCTTT	SMTBC5
Capacity		
CRS	18ga	18ga
SS	22ga	22ga

### Dimensions

Length	9-3/4"	9-3/4"
Width	3"	3"
Height	7/8"	7/8"
Weight	1.0 lbs.	1.2 lbs.



3-Blade Crimper,  
5-Blade Crimper  
1891186, 1891187

# HAND SEAMERS

They can bend sheet metal. Flatten it. And flat-out get the job done. 1/4" depth marks ensure an accurate bend, and a reinforced spring stands the test of time.



### Rugged and Durable

Stainless steel blades and a reinforced chrome silicon spring increase life and durability.



### Comfortable Grip

Over-molded handles reduce hand fatigue and won't slip or twist.



### Quick Identification

1/4" depth marks on the blades allow for quick bends.



### Seamer

For bending and flattening sheet metal.

## Product Specifications

Item Numbers	1891185	1891183	1891184
Product Descriptions	SMTHS3	SMTHS03	SMTHS6
Sizes	3"	3" Offset	6"
Capacity			
CRS	18ga	18ga	18ga
SS	22ga	22ga	22ga
<b>Dimensions</b>			
Length	9-3/4"	8-1/4"	10"
Width	3-1/8"	5"	6"
Height	7/8"	3-1/4"	3-1/2"
Weight	1.5 lbs.	1.4 lbs.	2.2 lbs.



1/4" depth marks on the blades allow for quick bends.



Locking latch.

3" Offset Hand Seamer  
1891183

6" Hand Seamer  
1891184

3" Hand Seamer  
1891185



# FOLDING TOOLS

This tool can fold without folding on the job. From end caps to folds for drive cleats, hilmor Folding Tools can handle it all. Strength meets precision with sight holes for depth alignment.



### Folding Tool

Built for both 3/8" (10mm) and 1" (25mm) folds.

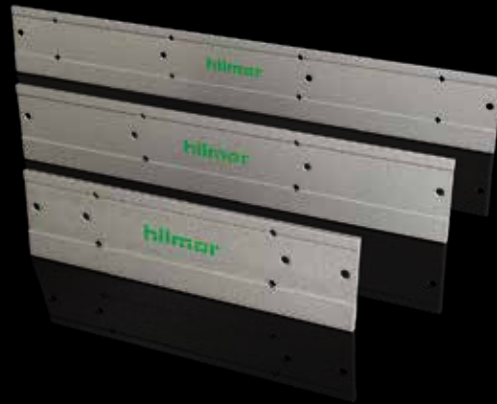


### Accurate Folding

Equipped with sight holes for proper depth alignment.

## Product Specifications

Item Numbers	1891146	1890985	1890986
Product Descriptions	SMTFT12	SMTDT18	SMTFT24
Capacity CRS	18ga	18ga	18ga
<b>Dimensions</b>			
Length	12"	18"	24"
Width	3-1/4"	3-1/4"	3-1/4"
Height	1/5"	1/5"	1/5"
Weight	1.4 lbs.	2.1 lbs.	2.8 lbs.



12", 18" & 24"  
Folding Tools  
1891146, 1890985,  
1890986

# DUCT STRETCHER

Two ducts. One hand. Bring it all together with the hilmor Duct Tool. Large gaps are no match. Its sleek aluminum body maintains a low profile to get into tight spaces.



### Rugged and Durable

An all-aluminum body increases life and durability.



### Small Space Capable

Features a low profile for use in tight spaces.



### Added Versatility

Additional spacing holes allow wheels to be adjusted for use on large gaps.



### Comfortable Grip

A cushion grip for reduced hand fatigue.

## Product Specifications

Item Number	1890987
Product Description	SMTDS
<b>Dimensions</b>	
Length	16"
Width	1/4"
Height	1-1/2"
Weight	11 oz.
<b>Replacement Wheels</b>	
Item Number	1890988
Product Description	SMTDSRW Rep Wheels 2PK



Duct Stretcher  
1890987

# HOLE CUTTERS

Power and precision. Cut holes in sheet metal like a knife through butter, and make them precise with metric and standard scales. Handles 2" to 20" holes.



### Rugged and Durable

Includes a lightweight aluminum frame, with a milled bit for life and durability.



### Added Versatility

Get two-in-one capabilities with both inch and metric scales.



### Perfect Fit

Fits into any corded or cordless drill with a 1/4" or larger chuck.

## Product Specifications

Item Numbers	1891191	1891192
Product Descriptions	SMTHC212	SMTHC220
Sizes	2" TO 12"	2" TO 20"

### Dimensions

Length	7"	11"
Width	3"	3"
Height	1"	1"
Weight	1.1 lbs.	1.5 lbs.

### Replacement Part

Item Number	1891193
Description	SMTHCRB Rep Bit 1 Pack



2" to 12" & 2" to 20"  
Hole Cutters  
1891191, 1891192

# DUCT SLITTING TOOL

Don't let its unassuming design fool you. The Duct Slitting Tool can pierce, slit or scribe with the best of them.



### Comfortable Grip

Over-molded handle reduces hand fatigue and won't slip or twist.



### Extra Versatility

Designed to scribe lines or pierce and enlarge holes in sheet metal.

## Product Specifications

Item Number	1890990
Product Description	SMTDR

### Dimensions

Length	9-3/8"
Width	1-1/4"
Height	1-1/4"
Weight	6 oz.



Duct Slitting Tool  
1890990



# DUCT KNIFE

It's time to cut ties with your old knife. The hilmor Duct Knife's hardened stainless steel blade can cut through duct board with silky, smooth precision.



### Rugged and Durable

A hardened stainless steel blade increases life and durability.



### Comfortable Grip

Over-molded handle reduces hand fatigue and won't slip or twist.



### Added Versatility

Serrated and standard cutting edges made to cut duct board and flexible duct.



### Simple Storage

A puncture-resistant nylon sheath with a belt loop allows for quick and easy storage.

## Product Specifications

Item Number	1891331
Product Description	SMTDK
<b>Dimensions</b>	
Length	11-5/8"
Width	5/8"
Height	1-3/8"
Weight	10 oz.



Duct Knife  
1891331

# CABLE TIE TENSIONING TOOL

The hilmor Cable Tie Tensioning Tool can relieve the stress of the job. It seamlessly tightens heavy and lightweight cable, and cuts excess material with its easy-to-use lever.



### Versatility

Works with both light and heavy-duty nylon cable ties.



### Clean Cut

Easy-to-use cutting lever allows for flush cutting of excess material.

## Product Specifications

Item Number	1891190
Product Description	SMTCTTT
<b>Dimensions</b>	
Length	7-5/8"
Width	3-7/8"
Height	5/8"
Weight	10 oz.



Cable Tie Tensioning Tool  
1891190

# TOOLS TO HELP YOU KICK IT OFF OR DRIVE IT HOME.



When it comes to tightening and loosening fasteners, you want tools that can get the job done fast without damaging the screw. Same for the next job and the job after that. That's why our line of Screwdrivers, Nut Drivers, Nutsetters and Hex Keys are built for the long haul.

# FAST CONNECT MAGNETIC NUT DRIVER SET

The nut driver has evolved. The set features a 3" and 6" hilmor Fast Connect Magnetic Nut Driver. The name alone says it all. They're lightning fast and allow for one-handed quick release for fast and easy bit changes.



## Simple Setup

A quick-change mechanism allows for easy change-out of standard bits with 1/4" hex shank.

x2

## Added Versatility

Set includes both stubby and 4" handles, ensuring you have the right size tool for the job.



## Secure Hold

A rare-earth magnet helps maintain a secure hold to keep fasteners firmly in place.



## Reduced Stripping

Designed to drive fasteners on the side instead of on the corners, reducing breakage and stripping.



## Quick Identification

A color-coded band makes size identification simple.



## Convenient Storage

Soft storage pouch with additional bit storage keeps everything organized.

## Product Specifications

Item Number	1937912
-------------	---------

Product Description	SBSFC
---------------------	-------

### Kit Contents

2-1/2" Fast Connect Bit Extension for 1/4"  
1-7/8" Magnetic Nutsetters for 1/4", 5/16", 3/8"  
#1 x 2" Phillips Impact Bit  
#2 x 2" Phillips Impact Bit  
#1 x 2" Square Impact Bit  
#2 x 2" Square Impact Bit  
4-5 x 2" Slotted Impact Bit  
6-8 x 2" Slotted Impact Bit

### Dimensions

Length	4"
Width	4"
Height	1-3/4"
Weight	11 oz.



Fast Connect Magnetic  
Nut Driver Set  
1937911

# FAST CONNECT SCREWDRIVER BIT SET

Fumbling around with bits is a waste of time. The hilmor Fast Connect Screwdriver Bit Set is definitely not. The set features the Fast Connect Bit Extension that's impact driver ready. Quickly swap out bit sizes in seconds flat.



## Impact Compatible

Extension and bits are specially manufactured for use with impact drivers.



## 1/4" Shank

The 1/4" quick-change shank is designed for use in impact drivers and rotary drills.



## Secure Fit

Precision tip geometry allows for a better fit and reduced stripping.



## Secure Hold

A rare-earth magnet helps maintain a secure hold to keep fasteners firmly in place.



## Reduced Stripping

Designed to drive fasteners on the side instead of on the corners, reducing breakage and stripping.



## Convenient Storage

Compact kit box included for quick and easy storage.

## Product Specifications

Item Number	1937912
Product Description	SBSFC

### Kit Contents

2-1/2" Fast Connect Bit Extension for 1/4"  
1-7/8" Magnetic Nutsetters for 1/4", 5/16", 3/8"  
#1 x 2" Phillips Impact Bit  
#2 x 2" Phillips Impact Bit  
#1 x 2" Square Impact Bit  
#2 x 2" Square Impact Bit  
4-5 x 2" Slotted Impact Bit  
6-8 x 2" Slotted Impact Bit

### Dimensions

Length	4"
Width	4"
Height	1-3/4"
Weight	11 oz.

Fast Connect Screwdriver Bit Set  
1937912



# MAGNETIC NUTSETTERS

Choose a size. Lock in your bit. And get right to it. The hilmor Magnetic Nutsetters can do work in seconds flat. They feature magnetic tips and a lobular design to grab any bit.

## Product Specifications

Item Numbers	Product Descriptions	Sizes	Length	Width	Height	Weight
1937872	MNS146	1/4"	6"	3/8"	3/8"	2 oz.
1937873	MNS5166	5/16"	6"	5/16"	5/16"	2 oz.
1937874	MNS386	3/8"	6"	1/2"	1/2"	3 oz.
1885435	MNS14178	1/4" - Set of 3	1-7/8"	3/8"	3/8"	2 oz.
1885436	MNS516178	5/16" - Set of 3	1-7/8"	5/16"	5/16"	3 oz.
1885437	MNS38178	3/8" - Set of 3	1-7/8"	1/2"	1/2"	3 oz.
1937871	MNS1783	1/4", 5/16", 3/8"	1-7/8"	NA	NA	3 oz.
1937875	MNS63PS	1/4", 5/16", 3/8"	6"	NA	NA	2 oz.



### Secure Hold

A rare-earth magnet helps maintain a secure hold to keep fasteners firmly in place.



### Impact Compatible

Bits are specially manufactured for use with impact drivers.



### Quick ID

A color-coded band makes size identification simple.



### Reduced Stopping

Designed to drive fasteners on the side instead of on the corners, reducing breakage and stripping.



### 1/4" Shank

The 1/4" quick-change shank is designed for use in impact drivers and rotary drills.



### Rugged and Durable

Bits are built to last, manufactured from cold-forged, high-grade steel and coated with black oxide to resist corrosion.



Designed for reduced stripping.



1/4", 5/16" and 3/8" Magnetic Nutsetters  
1937871, 1937875

# MAGNETIC NUT DRIVERS

All sizes to conquer jobs big and small. The hilmor Magnetic Nut Drivers give you a secure hold when and where you need it.



### Secure Hold

A magnetic tip keeps fasteners firmly in place.



### Quick Identification

A color-coded insert makes size identification simple.



### More Torque

A slip-resistant grip and wrench flats allow for maximum leverage. Wrench flat items 1839076 and 18839077 only.



### Big Bolt Capable

A hollowed shaft allows for use on long bolts.



### Rugged and Durable

Designed to last with a durable chrome-vanadium steel construction.

## Sizes

**1-1/2" Shaft Magnetic Nut Drivers:** Available in 1/4" and 5/16" sizes or as a 2-piece set.

**3" and 6" Shaft Magnetic Nut Drivers:** Sold individually, or choose our full 7-piece set or our handy 2-piece set.

**18" Shaft Magnetic Nut Drivers:** Available in 1/4" and 5/16" sizes.

## Product Specifications

### 1-1/2" Magnetic Nut Drivers

Item Numbers	1839055	1839056	1839057
Product Descriptions	SHSM14	SHSM516	SHSM2PC
Sizes	1/4"	5/16"	Set of 2 1/4" & 5/16"
Colors	Red	Yellow	Red & Yellow

### Dimensions

Length	3-1/2"	3-1/2"	3-1/2"
Width	1-1/4"	1-1/4"	1-1/4"
Height	1-1/4"	1-1/4"	1-1/4"
Weight	2 oz.	2 oz.	2 oz.

### 18" Magnetic Nut Drivers

Item Numbers	1839076	1839077
Product Descriptions	XLHSM14	XLHSM516
Sizes	1/4"	5/16"
Colors	Red	Yellow

### Dimensions

Length	22"	22"
Width	1-1/4"	1-1/4"
Weight	6 oz.	6 oz.



1-1/2" Magnetic Nut Drivers  
1839057

18" Magnetic Nut Drivers  
1839076, 1839077

# MAGNETIC NUT DRIVERS

## Product Specifications

3" Magnetic Nut Drivers					
Item Numbers	1839059	1839060	1839063	1839066	1839065
Product Descriptions	HSM14	HSM516	HSM716	HSM2PC	HSM7PC
Sizes	1/4"	5/16"	7/16"	Set of 2 1/4" & 5/16"	Set of 7
Colors	Red	Yellow	Brown	Red & Yellow	Multi
Dimensions					
Length	6-7/8"	6-7/8"	7-1/4"	6-7/8"	6-7/8" 7-1/4"
Width	1-1/4"	1-1/4"	1-3/8"	1-1/4"	1-1/4" 1-3/8"
Height	1-1/4"	1-1/4"	1-3/8"	1-1/4"	1-1/4" 1-3/8"
Weight	3 oz.	3 oz.	6 oz.	6 oz.	1.7 lbs.



A color-coded insert makes size identification quick and easy.



3" Magnetic Nut Driver Set  
1839065

# MAGNETIC NUT DRIVERS

## Product Specifications

6" Magnetic Nut Drivers				
Item Numbers	1839068	1839069	1839074	1839075
Product Descriptions	LHSM14	LHSM516	LHSM2PC	LHSM7PC
Sizes	1/4"	5/16"	Set of 2 1/4" & 5/16"	Set of 7
Colors	Red	Yellow Red & Yellow		Multi
Dimensions				
Length	9-7/8"	9-7/8"	9-7/8"	9-7/8" 10-1/4"
Width	1-1/4"	1-1/4"	1-1/4"	1-1/4" 1-3/8"
Height	1-1/4"	1-1/4"	1-1/4"	1-1/4" 1-3/8"
Weight	3 oz.	3 oz.	6 oz.	1.9 lbs.



A wrench flat lets you tighten with a wrench for ease and extra confidence.



6" Magnetic Nut Driver Set  
1839075





Quick-Change Magnetic Nut Driver 1/4" & 5/16"  
Shaft Length 3"  
1839054

# QUICK-CHANGE MAGNETIC NUT DRIVERS

It's as if 1/4" to 5/16" had an HVAC/R baby. The hilmor Quick-Change Magnetic Nut Driver is two tools in one, so you can switch from 1/4" to 5/16" with ease. A color-coded handle makes for quick identification. A magnetic tip keeps fasteners firmly in place.



## Secure Hold

A magnetic tip on both ends keeps fasteners firmly in place.



## Added Versatility

Quickly switch between 1/4" and 5/16", the two most common sizes.



## Quick Identification

A color-coded insert on the bands and bottom makes size identification simple.



## Big Bolt Capable

A hollowed shaft allows for use on long bolts.



## Rugged and Durable

Designed to last with a durable chrome-vanadium steel construction.

## Product Specifications

### 1/4" and 5/16" Quick-Change Magnetic Nut Drivers

Item Numbers	1937818	1839054	1891260
--------------	---------	---------	---------

Product Descriptions	QCNSD	QCND	QCND6
----------------------	-------	------	-------

Shaft Length	1-1/4"	3"	6"
--------------	--------	----	----

Sizes	1/4" & 5/16"	1/4" & 5/16"	1/4" & 5/16"
-------	--------------	--------------	--------------

### Dimensions

Length	3-1/4"	7-1/2"	10-3/8"
--------	--------	--------	---------

Width	1-1/4"	1-1/3"	1-1/3"
-------	--------	--------	--------

Height	1-1/4"	1-1/3"	1-1/3"
--------	--------	--------	--------

Weight	3 oz.	6 oz.	6 oz.
--------	-------	-------	-------



Quick-Change Magnetic Nut Drivers 1-1/4", 3" & 6"  
1937818, 1839054, 1891260

# RATCHETING 9 IN 1 MULTI-TOOL

A simple twist of the hand can drive a screw, nut or bolt in no time. Nine different bits are at your disposal. A ratcheting mechanism and an ergonomic rubber grip comes standard.



## Rugged and Durable

Designed with a high-torque ratcheting mechanism and thick shaft walls for long life and less stripping.



## More Torque

A slip-resistant grip allows for maximum leverage.



## Simple Setup

Easily change between forward, reverse and locked positions.

## Product Specifications

Item Number	1891259
Product Description	MTR91
Bit Sizes	#1 & #2 Phillips, 3/16" & 1/4" Slotted, #2 Square, 1/4", 5/16", and 3/8" Nut Drivers, and Valve Core Remover.
<b>Dimensions</b>	
Length	8-1/2"
Width	1-1/4"
Height	1-1/4"
Weight	12 oz.



Features 9 driving bits, including a Valve Core Remover.



# 9 IN 1 MULTI-TOOL

When you've got a lot of jobs but not a lot of time, the 9 in 1 Multi-Tool from hilmor can save the day. It features a slip-resistant grip for more torque and a thick-walled shaft for more durability.



### Rugged and Durable

Designed with thick shaft walls for long life and less stripping.



### More Torque

A slip-resistant grip allows for maximum leverage.

## Product Specifications

Item Numbers	1839053	1937819
Product Descriptions	9IN1SV	MT9IN16
Bit Sizes	#1 & #2 Phillips, 3/16" & 1/4" Slotted, #2 Square, 1/4", 5/16", and 3/8" Nut Drivers, and Valve Core Remover.	
<b>Dimensions</b>		
Length	7-1/4"	10-1/2"
Width	1-1/3"	1-1/8"
Height	1-1/3"	1-1/8"
Weight	7 oz.	10 oz.



9 In 1 Multi-Tool  
1839053

# 6 IN 1 STUBBY MULTI-TOOL

Small spaces come standard in HVAC/R. That's why you need the hilmor 6 in 1 Stubby Multi-Tool. Its compact design fits right in, giving you the necessary torque to tighten or loosen a screw or nut.



### Small Space Capable

A compact design allows for use in tight spaces.



### More Torque

A slip-resistant grip allows for maximum leverage.



### Simple Setup

Easily change between six different drivers - 3/16" and 1/4" Slotted, #1 and #2 Phillips, 1/4" and 5/16" Nut Drivers.

## Product Specifications

Item Number	1891351
Product Description	MTS
Bit Sizes	3/16" and 1/4" Slotted, #1 and #2 Phillips, 1/4" and 5/16" Nut Drivers.
<b>Dimensions</b>	
Length	4-7/8"
Width	1-1/4"
Height	1-1/4"
Weight	3 oz.



6 in 1 Stubby Multi-Tool  
1891351

# IMPACT FASTENER BITS

Small but mighty, hilmor Impact Fastener Bits are built to stand the test of time. They fit right in with the aggressive nature of impact drivers. Heavy-duty, high-grade steel will withstand extremely high torque output.



### Impact Compatible

Bits are specially manufactured for use with impact drivers.



### Rugged and Durable

Bits are built to last, manufactured from high-grade steel and coated with black oxide to resist corrosion.



### Secure Fit

Precision tip geometry allows for a better fit and reduced stripping.



### 1/4" Shank

The 1/4" quick-change shank is designed for use in impact drivers and rotary drills.

## Product Specifications

Item Numbers	Product Descriptions	Bit Size
1937913	PB12	#1 Phillips
1937914	PB22	#2 Phillips
1937915	SQB12	#1 Square Bit
1937916	SQB22	#2 Square Bit
1937917	SLB452	4-5 Slotted Bit
1937918	SLB682	6-8 Slotted Bit

## Dimensions

Length	7/8"
Height	1/4"
Width	1/4"
Weight	1 oz.

#1 Phillips  
1937913



#2 Phillips  
1937914



#1 Square Bit  
1937915



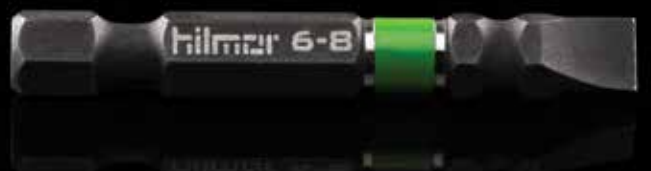
#2 Square Bit  
1937916



4-5 Slotted Bit  
1937917



6-8 Slotted Bit  
1937918



# FAST CONNECT BIT EXTENSION

Built for serious impact. And impact drivers. The hilmor Fast Connect Bit Extension gives you more versatility and maximum durability. All it takes is one hand to quickly release the bit and move on to the next job.



## Impact Compatible

Extension is specially manufactured for use with impact drivers.



## 1/4" Shank

Jaw design is compatible with all 1/4" hex shank accessories, including insert bits, while the 1/4" Fast Connect shank is designed for use in impact drivers and rotary drills.



## Protection

A black oxide coating resists corrosion.

## Product Specifications

Item Number	1937919
-------------	---------

Product Description	FCE25
---------------------	-------

### Dimensions

Length	2-1/4"
--------	--------

Width	3/4"
-------	------

Height	3/4"
--------	------

Weight	2 oz.
--------	-------



Fast Connect Bit Extension  
1937913



5-piece Screwdriver Set  
1891087



7-piece Screwdriver Set  
1891088

# KEYSTONE TIP DEMOLITION SCREWDRIVERS

It's a screwdriver on steroids. Pounding, prying, chiseling - no problem. A metal strike cap and through shaft can handle just about everything you put in front of it.



## Rugged and Durable

Designed to last with a heat-treated, chrome-plated through shaft and metal strike cap.



## More Torque

A slip-resistant grip allows for maximum leverage.



## Secure Fit

A machined tip allows for a better fit.

## Product Specifications

Item Numbers	1891395	1891396
Product Descriptions	SDSLKTDEM0144	SDSLKTDEM05167
Shaft Length	4"	7"
Tip Type/Size	1/4"	5/16"

## Dimensions

Length	8"	11-1/8"
Width	1"	1-1/8"
Height	1"	1-1/8"
Weight	6 oz.	6 oz.



Metal strike cap.

5/16" Keystone Tip Demolition Screwdriver 7"  
1891396



1/4" Keystone Tip Demolition Screwdriver 4"  
1891395



# KEYSTONE TIP & CABINET TIP SCREWDRIVERS

Driven to perform. Everything about these screwdrivers says get work done. They're designed to last with a heat-treated, chrome-plated shaft, yet they wouldn't dare strip out your screws.



### More Torque

A slip-resistant grip allows for maximum leverage.



### Quick Identification

Easy-to-read tip markings on the handle make identification quick and easy.



### Rugged and Durable

Designed to last with a heat-treated, chrome-plated shaft.



8" Keystone Tip Screwdriver 3/8"  
1891286



6" Cabinet Tip Screwdriver 1/4"  
1891289

## Product Specifications

KEYSTONE TIP SCREWDRIVERS					
Item Numbers	1891355	1891352	1891356	1891358	1891286
Product Descriptions	SDSLKTRS14112	SDSLKTSS144	SDSLKTRS144	SDSLKTRS5166	SDSLKTRS388
Shaft Length	1-1/2"	4"	4"	6"	8"
Tip Type/Size	1/4"	1/4"	1/4"	5/16"	3/8"
Dimensions					
Length	3-1/2"	8-1/8"	8"	10-1/2"	12-1/2"
Width	1-1/4"	1"	1-1/8"	1-1/4"	1-3/8"
Height	1-1/4"	1"	1-1/8"	1-1/4"	1-3/8"
Weight	2 oz.	4 oz.	4 oz.	6 oz.	8 oz.
CABINET TIP SCREWDRIVERS					
Item Numbers	1891287	1891288	1891289		
Product Descriptions	SDSLCTRS3163	SDSLCTRS3166	SDSLCTRS146		
Shaft Length	3"	6"	6"		
Tip Type/Size	3/16"	3/16"	1/4"		
Dimensions					
Length	6-1/2"	9-1/2"	10-1/4"		
Width	1"	1"	1"		
Height	1"	1"	1"		
Weight	3 oz.	3 oz.	4 oz.		

# TERMINAL BLOCK SCREWDRIVER

A unique screw calls for a unique screwdriver. The Terminal Block Screwdriver is one-of-a-kind with a heat-treated shaft and super-comfortable grip.



### More Torque

A slip-resistant grip allows for maximum leverage.



### Quick Identification

Easy-to-read tip markings on the handle make identification quick and easy.



### Rugged and Durable

Designed to last with a heat-treated, chrome-plated shaft.



### Secure Fit

A machined tip allows for a better fit.

## Product Specifications

Item Number	1891397
Product Description	SDTB4
Shaft Length	4"
Tip Type/Size	Terminal Block
<b>Dimensions</b>	
Length	7-1/8"
Width	7/8"
Height	1"
Weight	2 oz.



Terminal Block Screwdriver 4"  
1891397

# PHILLIPS TIP SCREWDRIVERS

Forget screws that won't strip. You need a screwdriver that won't strip them. Introducing the hilmer Phillips Tip Screwdriver featuring machined tips for a precise fit. A rugged shaft and comfortable handle round out this tool nicely.



### More Torque

A slip-resistant grip allows for maximum leverage.



### Quick Identification

Easy-to-read tip markings on the handle make identification quick and easy.



### Rugged and Durable

Designed to last with a heat-treated, chrome-plated shaft.



### Secure Fit

A machined tip allows for a better fit.

## Product Specifications

Item Numbers					
1891290	1891391	1891392	1891393	1891394	
Product Descriptions					
SDPHRS13	SDPHRS2	SDPHRS24	SDPHRS27	SDPHRS36	
Tip Type/Size					
#1PH	#2PH	#2PH	#2PH	#3PH	
Shaft Length					
3"	1-1/2"	4"	7"	6"	
<b>Dimensions</b>					
Length	6-1/2"	3-1/2"	8"	11"	10-1/2"
Width	1"	1-1/4"	1"	1"	1-1/4"
Height	1"	1-1/4"	1"	1"	1-1/4"
Weight	3 oz.	2 oz.	4 oz.	5 oz.	6 oz.



#1 Phillips Tip Screwdriver 3"  
1891290

# SCREWDRIVER SETS

Tip markings on the handle for quick ID. Heat-treated shafts for extra durability. There are thousands of screwdrivers to choose from, but only one set says hilmor. Available in 5-piece or 7-piece sets.



### More Torque

A slip-resistant grip allows for maximum leverage.



### Quick Identification

Easy-to-read tip markings on the handle make identification quick and easy.



### Rugged and Durable

Designed to last with a heat-treated, chrome-plated shaft.



### Secure Fit

A machined tip allows for a better fit.

## Product Specifications

Item Numbers	1891087	1891088
Product Descriptions	SD5PC	SD7PC
Includes	5-piece Set #2 Phillips Tip Round Shank 4" 3/16" Cabinet Tip Round Shank 6" 1/4" Cabinet Tip Round Shank 6" 1/4" Keystone Tip Square Shank 4" 5/16" Keystone Tip Round Shank 6"	
	7-piece Set #1 Phillips Tip Round Shank 3" #2 Phillips Tip Round Shank 4" 3/16" Cabinet Tip Round Shank 3" 3/16" Cabinet Tip Round Shank 6" 1/4" Cabinet Tip Round Shank 6" 1/4" Keystone Tip Square Shank 4" 5/16" Keystone Tip Round Shank 6"	

### Dimensions

Length	10-1/4"	10-1/2"
Width	1-1/4"	1-1/4"
Height	1-1/4"	1-1/4"
Weight	1.4 lbs.	1.7 lbs.

5-piece Screwdriver Set  
1891087



7-piece Screwdriver Set  
1891088



# PRECISION SCREWDRIVER SET

When the job calls for precision, reach for hilmor. The Precision Screwdriver Set features machined tips and rotating heads. Plus, a convenient storage pouch keeps you organized.



### Comfortable Grip

Over-molded handles reduce hand fatigue and won't slip or twist.



### Maximum Precision

A rotating head allows for precise adjustments while giving you greater control.



### Quick Identification

Easy-to-read tip markings on the handle make identification quick and easy.



### Storage

Pouch included for quick and easy storage.

## Product Specifications

Item Number 1891089

Product Description SDPS

### Includes

1/16" x 2" Slotted  
#0 x 3" Phillips  
3/32" x 3" Slotted  
1/8" x 4" Slotted  
1/8" x 6" Slotted

### Dimensions

Length 10-1/4"  
Width 5"  
Height 1/8"  
Weight 10 oz.



Includes storage pouch.



Tip markings for quick identification.



Precision Screwdriver Set  
1891089

# HEX KEY SETS

Hex head screws have nowhere to hide. hilmor Hex Key Sets have standard and metric sizes covered. They're slip-resistant so you never lose your grip and always keep your cool.

Ball End Hex Key Set Metric  
1937816

Ball End Hex Key Set Inch  
1839049



You don't fold on the job. Luckily, this set does for easy, convenient storage. Available in inch and metric.



Folding Hex Key Set Metric  
1891472

Folding Hex Key Set Inch  
1839048

## Product Specifications

Item Numbers	1839049	1937816
Product Descriptions	HKSS Ball End Hex Key Set Inch	HKSBEM Ball End Hex Key Set Metric
Sizes	.05", 1/16", 5/64", 3/32", 7/64", 1/8", 9/64", 5/32", 3/16", 7/32", 1/4", 5/16", 3/8"	1.5mm, 2mm, 2.5 mm, 3mm, 4mm, 5 mm, 6 mm, 8 mm, 10 mm

### Dimensions

Length	7-1/4"	7"
Width	2-3/4"	2-1/2"
Height	3/4"	3/4"
Weight	13 oz.	12 oz.

## Product Specifications

Item Numbers	1839048	1891472
Product Descriptions	HKFS Folding Hex Key Set Inch	HKFSM Folding Hex Key Set Metric
Sizes	5/64", 3/32", 7/64", 1/8", 9/64", 5/32", 3/16", 7/32", 1/4"	1.5mm, 2mm, 2.5mm, 3mm, 4mm, 5mm, 6mm, 8mm

### Dimensions

Length	4-1/4"	4-1/4"
Width	7/8"	7/8"
Height	1-5/8"	1-5/8"
Weight	5 oz.	5 oz.

# T-HANDLE HEX KEY SET

T for toughness. The hilmer T-Handle Hex Key Set features hardened, nickel chrome-plated shafts, yet ergonomic handles make sure this tool isn't too tough on your hands.



### Rugged and Durable

Hardened, nickel chrome-plated shafts increase life and durability.



### Comfortable Grip

Ergonomic molded handles reduce hand fatigue and won't slip or twist.



### Quick Identification

Easy-to-read size markings make identification simple.



### Added Versatility

A 6" shaft works well in tight spaces, while the 1/2" shaft gives you more leverage.

## Product Specifications

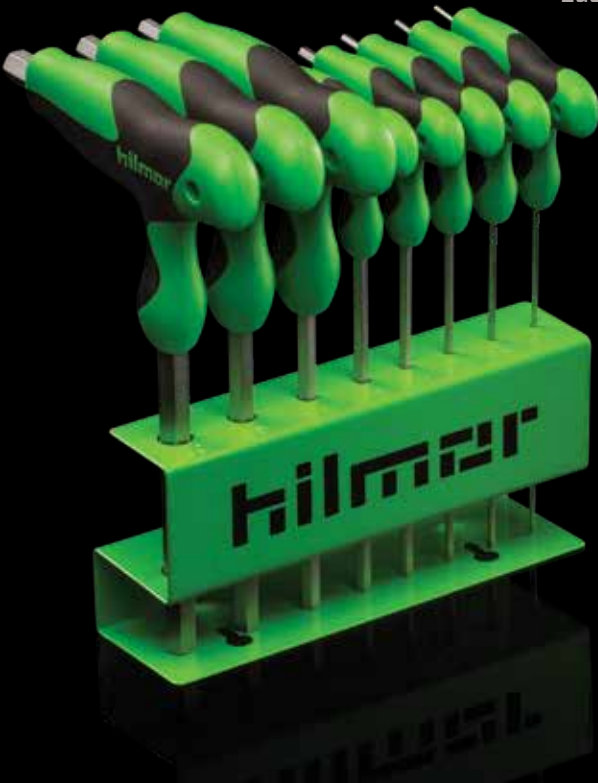
Item Numbers	1891471	1937817
Product Descriptions	HKTH-Handle Hex Key Set Inch	HKTH T-Handle Hex Key Set Metric
Sizes	3/32", 5/32", 7/64", 3/16", 1/8", 7/32", 9/64", 1/4", 5/16", 3/8"	2 mm, 2.5 mm, 3 mm, 4 mm, 5 mm, 6 mm, 8 mm, 10 mm

## Dimensions

Length	8-3/4"	8"
Width	7-3/4"	6-3/4"
Height	5-3/8"	5-1/4"
Weight	2.8 lbs.	2.2 lbs



Easy-to-read size markings.



T-Handle Hex Key Set Metric  
1937817



T-Handle Hex Key Set Inch  
1891471

# TOOLS THAT ARE AS DURABLE AS YOU.



Cutting, gripping, stripping and crimping. Our family of Pliers, Wrenches and Wire Strippers let you do all that and more, while each tool's comfortable grip is a treat for your hands.



Digital Adjustable Torque Wrench  
1963826



# DIGITAL ADJUSTABLE TORQUE WRENCH

Tightening to true torque when working on mini-splits is serious business. Under tightening could result in refrigerant leaks, while overtightening could mean burst tubing. That's why the hilmor Digital Adjustable Torque Wrench is critical to perfecting torque time and time again. The 9 factory memory settings make it quick to set common torque values, while the digital display shows the amount of force applied to the flare nut. And if that didn't make the job easy enough, lights and buzzers illuminate and sound when the desired torque is achieved.



## Lighten Your Load

Adjustable jaw eliminates the need to carry around extra heads.



## Easy To Use

Nine programmable memory settings allow for quick access to the most common torque levels.



## Precise Readings

Digital adjustments help ensure torque measurement accuracy.



## Extra Confidence

LED lights and buzzer indicate that desired torque has been reached.

## Product Specifications

Item Number	1963826
-------------	---------

Product Description	DAJTW
---------------------	-------

Jaw Capacity	1/4" to 1-1/16" to accommodate up to 5/8" flare nuts
--------------	--

Accuracy	+ / 3%
----------	--------

Batteries	AA (x2)
-----------	---------

## Dimensions

Length	17"
--------	-----

Width	2-3/8"
-------	--------

Weight	2 lbs.
--------	--------



# ADJUSTABLE WRENCHES

Take your pick of imperial or metric scales. They come standard on all of our Adjustable Wrenches. They're made to fit in your hand with ergonomic grips and made to last by hilmor.



## Comfortable Grip

Over-molded handles reduce hand fatigue and won't slip or twist.

x2

## Added Versatility

Get two-in-one capabilities with both inch and metric scales.

## Product Specifications

Item Number	1885369	1885370	1885421	1885422
Product Descriptions	AW6	AW8	AW10	AW12
Sizes	6"	8"	10"	12"
Jaw Capacity Up To	1"	1-1/8"	1-1/4"	1-1/2"
Dimensions				
Length	6-3/8"	8-1/4"	10"	12-1/8"
Width	1-3/4"	1"	2-5/8"	2-7/8"
Height	1/2"	5/8"	3/4"	3/4"
Weight	6 oz.	12 oz.	1.1 lbs.	1.7 lbs.



6", 8", 10" and 12" Adjustable Wrenches  
1885369, 1887370, 1885421, 1885422

# QUICK-ADJUSTING TONGUE & GROOVE PLIERS

We've made an adjustment to standard pliers. Our Quick-Adjusting Tongue and Groove Pliers feature a simple push button to give you a quick precision grip on pipes, fasteners and more.



### Simple Sizing

A push button allows for quick adjustments while multiple grooves guarantee precise positioning.



### Comfortable Grip

Over-molded handle reduces hand fatigue and won't slip or twist.



### Strong Hold

Machined jaws increase grip on the material every time.

## Product Specifications

Item Numbers	1890996	1890997	1890998
Product Descriptions	PBTGP8	PBTGP10	PBTGP12
Length	8"	10"	12"
Jaw Capacity	1-1/2"	1-3/4"	2-3/16"
<b>Dimensions</b>			
Length	8-1/4"	10-1/8"	12-1/4"
Width	5/8"	3/4"	3/4"
Height	1-3/4"	2-1/4"	2-1/2"
Weight	9 oz.	13 oz.	1.4 lbs.



8", 10" and 12" Quick-Adjusting Tongue & Groove Pliers  
 1890996, 1890997, 1890998

# TONGUE & GROOVE PLIERS

Like a snapping turtle, these pliers grab hold and won't let go. Machined jaws guarantee a lock-tight grip, and over-molded handles won't slip or twist. 12" model adjusts to a 2-1/16" jaw capacity.



## Comfortable Grip

Over-molded handles reduce hand fatigue and won't slip or twist.



## Strong Hold

Machined jaws increase grip on the material every time.

## Product Specifications

Item Numbers	1885366	1885367	1885368
Product Descriptions	GJP8	GJP10	GJP12
Sizes	8"	10"	12"
Jaw Capacity	1"	1-11/16"	2-1/16"
<b>Dimensions</b>			
Length	8"	10-1/4"	12"
Width	2-1/2"	3-1/4"	3-1/4"
Height	3/4"	3/4"	7/8"
Weight	10 oz.	1.1 lbs.	1.5 lbs.



8", 10" and 12" Tongue & Groove Pliers  
1885366, 1885367, 1885368

# LINEMAN'S PLIERS

Grab. Twist. Cut. Repeat. Over and over again. A laser-hardened cutting edge stays sharp longer, and cross-cut knurled jaws guarantee a strong grip time after time. hilmor Lineman's Pliers will last.



### Stays Sharp

A laser-hardened cutting edge will stay sharper for longer.



### Strong Hold

Cross-cut knurled jaws increase grip on the material every time.



### Comfortable Grip

Over-molded handles reduce hand fatigue and won't slip or twist.

# LONG NOSE PLIERS

It's tough to beat a good pair of pliers. A laser-hardened cutting edge, cross-cut knurled jaws and over-molded handles make hilmor Long Nose Pliers pretty darn tough to beat.



### Stays Sharp

A laser-hardened cutting edge will stay sharper for longer.



### Strong Hold

Cross-cut knurled jaws increase grip on the material every time.



### Comfortable Grip

Over-molded handles reduce hand fatigue and won't slip or twist.

## Product Specifications

Item Numbers	1885399	1885411
Product Descriptions	LP85	LP95
Sizes	8-1/2"	9-1/2"

### Dimensions

Length	8-3/4"	9-1/2"
Width	2"	2-1/4"
Height	7/8"	7/8"
Weight	13 oz.	1.0 lbs.



8-1/2" and 9-1/2"  
Lineman's Pliers  
1885399, 1885411

## Product Specifications

Item Numbers	1885397	1885398
Product Descriptions	LNP6	LNP8
Sizes	6"	8"

### Dimensions

Length	6-7/8"	8-5/8"
Width	2-1/8"	2-1/8"
Height	5/8"	3/4"
Weight	4 oz.	8 oz.



6" and 8" Long Nose Pliers  
1885397, 1885398

# DIAGONAL CUTTING PLIERS

What's our angle? To make a great pair of pliers. The Diagonal Cutting Pliers stay sharp as a samurai sword with a laser-hardened cutting edge.



### Stays Sharp

A laser-hardened cutting edge will stay sharper for longer.



### Comfortable Grip

Over-molded handles reduce hand fatigue and won't slip or twist.

## Product Specifications

Item Numbers	1885412	1885362	1885363
Product Descriptions	DCP6	DCP7	DCP8
Sizes	6"	7"	8"
<b>Dimensions</b>			
Length	6-3/4"	7-1/4"	8"
Width	2-1/8"	2-1/8"	2-1/8"
Height	3/4"	3/4"	3/4"
Weight	4 oz.	8 oz.	12 oz.



6", 7" and 8" Diagonal Cutting Pliers  
1885412, 1885362, 1885363

# CRIMPING TOOL

Crimp. Cut. We've got you covered. The hilmor Crimping Tool handles both insulated and non-insulated terminals. Over-molded handles and a hardened cutting edge come standard, too.



### Stays Sharp

A hardened cutting edge will stay sharper for longer.



### Comfortable Grip

Over-molded handles reduce hand fatigue and won't slip or twist.

## Product Specifications

Item Number	1885429
Product Description	FC10
Size	10"
Capacity Wire	10-22AWG
Insulated Terminals	10-22AWG
Non-Insulated Terminals	10-22AWG
<b>Dimensions</b>	
Length	9-7/8"
Width	2-1/4"
Height	3/4"
Weight	1.1 lbs.

10" Crimping Tool  
1885429



# WIRE STRIPPERS

The hilmor Wire Strippers feature easy-to-read size markings, which means you can strip wires with ease and without damage. Electrical work is no laughing matter, and these Wire Strippers are no joke.



**Comfortable Grip**  
Over-molded handles reduce hand fatigue and won't slip or twist.



**Quick ID**  
Easy-to-read size markings on the jaws make identification simple.



**Bolt Cutting**  
Cuts 4-40, 5-40, 6-32, 8-32, 10-24, 10-32 bolts and screws to desired size. \*1885424 Only.

## Product Specifications

Item Numbers	1885427	1885426	1885424
Product Descriptions	WS6	WS7	WS8
Sizes	6"	7"	8"
Capacity	10-20AWG	10-20AWG	10-22AWG
<b>Dimensions</b>			
Length	6-1/2"	7-1/4"	8"
Width	2-1/4"	2-1/8"	2-5/8"
Height	5/8"	5/8"	5/8"
Weight	5 oz.	6 oz.	8 oz.

8" Wire Stripper  
1885424



7" Wire Stripper  
1885426



6" Wire Stripper  
1885427



# SELF-ADJUSTING WIRE STRIPPER

All wire strippers are not created equal. These come with the ability to crimp insulated and non-insulated terminals 10-22AWG. Plus, clearly marked indicators mean you can strip without damage.

x2

## Added Versatility

Crimp insulated and non-insulated terminals 10-22 AWG.



## Comfortable Grip

Over-molded handles reduce hand fatigue and won't slip or twist.



## Maximum Control

An adjustable stop controls the length of wire being stripped.



## Precise Stripping

A micro-adjusting knob allows for stripping down to 30 AWG and up to 8 AWG.



## Self-adjusting

Automatically adjusts to strip and cut wire 10-24 AWG.

## Product Specifications

Item Number	1885423
Product Description	WSSA
Sizes	Self-adjusting
Capacity	
Wire	10-24AWG
Insulated Terminals	10-22AWG
Non-Insulated Terminals	10-22AWG
<b>Dimensions</b>	
Length	8-3/8"
Width	3-1/2"
Height	5/8"
Weight	13 oz.



Adjustable stop and micro-adjusting knob.

Self-Adjusting Wire Stripper  
1885423





# STAY SHARP ON THE JOB.



Sure, you have knives. But you don't have these knives. hilmer's new line of Utility Knives can definitely cut it. They're ruggedly durable and seriously sharp. Plus, they come with all the safety features you need to keep you in one piece. Like a bi-metal, shatter-resistant blade.



Folding Utility Knife  
1885433

# RETRACTABLE UTILITY KNIFE

This is a great knife to have by your side. Quick cuts come standard with a unique trigger grip. Plus, you've got a few spare blades in the handle when you need them.



## Rugged and Durable

An all-metal body and bi-metal blade increase life and durability.



## Secure Storage

Conveniently store up to five extra blades in the handle.



## Easy to Change

Change your blade quickly and easily without the use of a separate tool.



## Easy to Cut

Get easier cutting on the pull with a unique trigger grip.



## Bi-metal Blade

Three bi-metal blades are included.

## Product Specifications

Item Number	1885434
-------------	---------

Product Description	UKHR
---------------------	------

### Dimensions

Length	1-3/4"
Width	1"
Height	6-3/4"
Weight	6 oz.

### Bi-Metal Utility Knife Blades

Item Number	1885432
-------------	---------

Product Description	BMUKB Bi-Metal Utility Knife Blades 5PK
---------------------	--



A shatter-resistant bi-metal blade gives you strength and precision. Store up to five blades in the handle.



Retractable Utility Knife  
1885434

# FOLDING UTILITY KNIFE

hilmer's Folding Utility Knife stands up to the test with an all-metal body and bi-metal blade. It's your new knife.



### Rugged and Durable

An all-metal body and bi-metal blade increase life and durability.



### Securely Locks Blade

A blade-locking mechanism prevents the blade from coming out during use.



### One-handed Operation

A liner-lock for one-handed operation and extra safety.



### Superior Versatility

A built-in wire-stripping channel for up to 10-gauge wire is there when you need it.



### Belt Clip

A belt clip keeps knife close for easy access.



### Bi-metal blade

One bi-metal utility knife blade is included.

## Product Specifications

Item Number	1885433
-------------	---------

Product Description	UKHF
---------------------	------

### Dimensions

Length	1-1/2"
Width	3/4"
Height	4"
Weight	5 oz.

### Bi-Metal Utility Knife Blades

Item Number	1885432
-------------	---------

Product Description	BMUKB Bi-Metal Utility Knife Blades 5PK
---------------------	--



You won't fold on the job. With a liner lock, this knife won't either. Until you want it to.

Folding Utility Knife  
1885433



# THE REWARD IS IN THE DETAIL.



If you like to set the bar high, you need service tools that do the same. These will help you tend to every last detail, so you can get the job done right.

# INSPECTION MIRRORS

Leaks can't hide anymore with hilmor Inspection Mirrors. With handles that extend, the telescoping inspection mirrors truly do go above and beyond.

## Product Specifications

Item Number	M-1	M-2	M-3	M-5
Product Descriptions	1-1/4" Circular Telescoping Mirror	2-1/4" Circular Telescoping Mirror	2-1/8" x 3-1/2" Rectangular Telescoping Mirror	1" x 2" Oval Telescoping Mirror
Handle Extends	6-1/4" to 18-1/4"	10" to 14"	11-1/4" to 15-1/4"	8" to 21"
<b>Dimensions</b>				
Length	10"	12-1/2"	14-1/2"	9.75"
Width	1/4"	1/4"	1/2"	0.75"
Height	2-1/2"	3-1/4"	4.00"	2.25"
Weight	3.2 oz	2.2 oz.	3.8 oz.	3.2 oz.



# FIN STRAIGHTENING TOOLS

A condenser should work as efficiently as you. These tools make it easy to remove debris and straighten fins.

## Product Specifications

Item Number	T-100	T-101	T-300	T-400	T-412	T-417	T-418
Product Description	Fin Tool Kit	Fin Tool Kit	Fin Tool	Set of 6	Fin Comb	Fin Comb	Fin Comb
Sizes	8, 9, 10, 11, 12, 14 FPI	13, 15, 16, 17, 18, 20 FPI	8, 9, 10, 11, 12, 13, 14, 15, 16, 17, 18, 20 FPI	8 & 10, 9 & 15, 11 & 13, 12 & 14, 16 & 17, 18 & 20 FPI	12 & 14 FPI	16 & 17 FPI	18 & 20 FPI
<b>Dimensions</b>							
Length	5-3/4"	5-3/4"	12-1/4"	7-1/2"	8-3/4"	8-3/4"	8-1/2"
Width	2"	2"	4"	2-3/4"	2-1/4"	2-1/4"	2-1/4"
Height	1-1/2"	1-1/4"	1-1/2"	1-1/4"	1/2"	1/2"	1/2"



# NITROGEN PURGE TOOL

The hilmer Nitrogen Purge Tool is rugged and durable - a lot like you.



## Regulates Nitrogen Flow

Designed to regulate flow with 50 psi inlet pressure. Maximum pressure of 200 psi.



## Quick Change Dial

No flow indicator valve needed. Purge setting = 25-35 scfh @ 50 PSI, Braze setting = 3-6 scfh @ 50 PSI.

## Product Specifications

Item Number	HMNPT01
-------------	---------

Product Description	NPT
---------------------	-----

### Dimensions

Length	2"
--------	----

Width	3"
-------	----

Height	2"
--------	----

Weight	1 lb.
--------	-------



Nitrogen Purge Tool  
HMNPT01



# DEBURRING TOOLS

Whether they're inside or outside, copper or plastic, Hilmor Deburring Tools can smooth things over. With steel blades, the standard Deburrer works flawlessly on OD tubing from 1/4" to 1-5/8". And our Pocket Size Deburring Tool lets you put your silky-smooth signature on even the smallest pieces of tubing.



## Product Specifications

Item Numbers	1839052	1891258
Product Descriptions	DBUR	DBURPS
Sizes	1/4" to 1-5/8"	1/4" and up
<b>Dimensions</b>		
Length	2-3/8"	5-1/2"
Width	2-1/8"	3/8"
Height	2-1/8"	3/8"
Weight	2 oz.	7 oz.

Deburring Tools  
1839052, 1891258

# TUBE PREP BRUSHES

You do the job right or you don't do it at all. This tool lets you easily remove loose copper and other debris from joints so you can solder and braze with the best of them.



### Rugged and Durable

High-carbon steel bristles and a plastic handle increase life and durability.



### Quick Identification

Easy-to-read size markings make identification simple.

## Product Specifications

Item Numbers	1891474	1891475	1891462
Product Descriptions	TPB12	TPB34	TPB1
Sizes	1/2"	3/4"	1"
<b>Dimensions</b>			
Length	6-3/8"	6-3/8"	6-3/8"
Width	1-1/4"	1-1/4"	1-1/4"
Height	3/4"	1/2"	1"
Weight	1 oz.	1 oz.	1 oz.



1/2", 3/4" and 1"  
Tube Prep Brushes  
1891474, 1891475, 1891462

# LOCKING PLIERS PINCH-OFF TOOL

The hilmer Locking Pliers Pinch-Off Tool is rugged and durable – a lot like you. Made from high-grade, heat-treated alloy steel, this tool is built to handle whatever you throw at it. The pinch-off mechanism locks on to tubing so your hands are free to get the real job done.



## Rugged and Durable

Pliers are built to last, manufactured from high-grade, heat-treated alloy steel for durability.



## Added Versatility

Designed to pinch off and lock on to 1/8" to 5/8" diameter tubing, leaving both hands free to do other work.



## Securely Locks In Place

A classic trigger release is designed to provide maximum locking force.



## Precision Adjustments

Adjusting screw in the handle allows for quick and precise pressure changes between different tubing diameters.

## Product Specifications

Item Number	1937673
-------------	---------

Product Description	LPPOT
---------------------	-------

Sizes	1/8" to 5/8"
-------	--------------

### Dimensions

Length	7-1/4"
--------	--------

Width	2-1/4"
-------	--------

Height	1"
--------	----

Weight	12 oz.
--------	--------



Locking Pliers Pinch-Off Tool  
1937673

# SERVICE WRENCHES

Smart features that save your knuckles and your time. Our Straight Service Wrench makes changing sizes quick and easy. Our Offset Service Wrench makes maneuvering around cramped spaces second nature. The reversible Ratchet Wrench has square openings of 1/4" and 3/16" on one end and 3/8" and 5/16" on the other end. And, when it comes to accessing liquid- and suction-based valves, reach for our Hex Key Adapter. It works on 3/16" and 5/16" hex valves.



Hex Key Adapter  
1839046

## Product Specifications

### Hex Key Adapter

Item Number	1839046
Product Description	SWHKA
Hex Valve Sizes	3/16" and 5/16"

### Dimensions

Length	1/2"
Width	2/5"
Height	2/5"
Weight	1 oz.

## Product Specifications

Item Numbers			
	1839042	1839043	1839045
Product Descriptions			
	SWS Service 1/4" x 3/16" SQ 3/8" x 5/16" SQ	SWOS Offset 1/4" x 3/16" SQ 3/8" x 5/16" SQ	SWLR Service LR 1/2" x 9/16" Hex 3/16" x 1/4" SQ
Square Sizes			
	1/4", 3/16" 3/8", 5/16"	1/4", 3/16" 3/8", 5/16"	1/4", 3/16"
Hex Sizes			
	N/A	N/A	1/2", 9/16"
Accessories			
1839046 SWHKA Service Hex Key Adapter works on 3/16" and 5/16" Hex Valves			
Dimensions			
Length	5-1/2"	5-1/4"	6-1/4"
Width	1/2"	3/4"	1/2"
Height	7/8"	7/8"	1"
Weight	3 oz.	3 oz.	5 oz.



Straight Service Wrench  
1839042

Offset Service Wrench  
1839043

# STAY BRIGHT ON THE JOB.



# WORK LIGHT



**Two Power Modes: 1200 Lumens (3 Hrs), 600 Lumens (5 Hrs)**



**Lithium Ion Rechargeable Battery**



**Magnetic Stand for Secure Positioning**



**Adjustable Joints**

## Product Specifications

Item Number	HMWL1200
-------------	----------

Product Description	WL1200
---------------------	--------

### Dimensions

Length	7"
Width	7"
Height	8-1/2"
Weight	3.9 lbs.



# MINI WORK LIGHT



**Two Power Modes: 600 Lumens (1.5 Hrs), 300 Lumens (3 Hrs)**



**Magnetic Base**



**Adjustable Joint For Different Angles**



**Rechargeable Li-Ion Battery**

## Product Specifications

Item Number	HMMWL600
-------------	----------

Product Description	MWL600
---------------------	--------

### Dimensions

Diameter	3"
Height	2"
Weight	0.3 lbs.



# PORTABLE WORK LIGHT



**Two Power Modes: 1200 Lumens (4 Hrs), 600 Lumens (8 Hrs)**



**Wide Circular Beam**



**Secure Hold**



**Rechargeable Battery**

## Product Specifications

Item Number	HMPWL1200
-------------	-----------

Product Description	PWL1200
---------------------	---------

### Dimensions

Length	10-1/4"
Width	2"
Height	1-1/2"
Weight	1.35 lbs.



# PIVOTING WORK LIGHT



**240 Lumen Array**



**Pivoting Work Light**



**Magnetic Attachment Points on Back and Base**



**3 AA Batteries Included**

## Product Specifications

Item Number	HMPWL240
-------------	----------

Product Description	PWL240
---------------------	--------

### Dimensions

Length	8-1/5"
Width	2-1/4"
Height	2"
Weight	9.6 oz.



# COMPACT WORK LIGHT



150 Lumens Array



3 AAA Batteries Included



Rotating Hook for Hands-Free Use



Magnetic Base for Precise Positioning

## Product Specifications

Item Number HMCWL150

Product Description CWL150

### Dimensions

Length 5-1/5"  
Width 1-1/2"  
Height 2-1/2"  
Weight 1.0 oz.



# POCKET WORK LIGHT



180 Lumens



180° Swivel Magnetic Clip



3 AAA Batteries Included

## Product Specifications

Item Number HMPWL180

Product Description PWL180

### Dimensions

Length 6-1/4"  
Width 1"  
Height 3/4"  
Weight 2.4 oz.



# IN THE DARK, DIRTY AND DOWNRIGHT CRAMPED, YOU GOTTA KEEP IT TOGETHER.



We're not just revolutionizing your HVAC/R equipment, we're also retooling the way you store it. We offer a wide array of smart storage and transport solutions for all your valuable tools. It's another way we help you conquer from one job to the next. And keep your cool no matter the climate.



# HVAC/R TOTE

The hilmer HVAC/R Tote is your go-to tool storage and transport solution. It includes 27 exterior and interior pockets, 18 bands and clips for your keys so you can store your tools safely and find them quickly.



## Keep Organized

27 pockets and 18 bands.  
14 exterior pockets and  
13 interior pockets.



## Rugged and Durable

Designed to last with  
water-resistant bottom and  
reinforced rivets.



## Secure Storage

Stow your meter away safely  
in the padded pocket in the  
interior of the tote. Use the tape  
measure clip, key clip and tape  
holder loop to secure the rest of  
the items you need.



## Helps with the Heavy Lifting

This tote has room for multiple  
tools and is tested up to  
50 lbs. The padded shoulder  
strap makes carrying more  
comfortable.

## Product Specifications

Item Number	1839078
Product Description	HT
Number of Pockets	
Interior	13
Exterior	14
Extra Features	Key Clip; Tape Loop; Shoulder Strap
<b>Dimensions</b>	
Length	7-1/2"
Width	7-1/2"
Height	13"
Weight	3.3 lbs.



HVAC/R Tote  
1839078

# BACKPACK TOOL BAG

The hilmer Backpack Tool Bag is your jobsite sidekick with 19 exterior and interior pockets. Its sturdy rubber, water-resistant bottom means rain or shine, the contents inside won't be damaged. And while it's spacious enough to hold up to 50 lbs., padded shoulder straps and a back air vent make hauling it a little more comfortable and leave your hands free to safely climb a ladder.



### Secure Storage

Stow your meter away safely in either of the two padded zipper pockets on the exterior sides of the tote.



### Superior Versatility

Hang your manifold from the bag's metal loop for easy transport to the jobsite.



### Helps with the Heavy Lifting

This bag has room for multiple tools and is tested up to 50 lbs. The padded shoulder straps and air vent back make carrying more comfortable.



19 exterior and interior pockets allow you to store tools safely and find them quickly.

## Product Specifications

Item Number 1839080

Product Description BKB

Number of Pockets

Interior 11

Exterior 8

### Extra Features

Clear Vinyl ID Window Pocket; Shoulder Strap; Double-grip Handles; Steel "U" Ring; Airflow Ventilator Pads

### Dimensions

Length 6"

Width 14"

Height 16"

Weight 4.5 lbs.



Backpack Tool Bag  
1839080



A metal loop gives you an easy way to transport your manifold.



Two padded, zippered side pockets provide safe storage for your meter.

# TOOL CENTER BAG

The hilmer Tool Center Bag is your total tool storage solution. It includes 24 exterior and interior pockets and three zippered pouches so you can store your tools safely and find them quickly.



## Keep Organized

24 pockets and three zippered pouches.



## Secure Storage

Stow your meter away safely in either of the two padded pockets on the exterior sides of the tote.



## Helps with the Heavy Lifting

This bag has room for multiple tools and is tested up to 50 lbs. The padded shoulder strap makes carrying more comfortable.



## Rugged and Durable

Designed to last with a hard plastic, water-resistant bottom and a padded aluminum carrying handle.

## Product Specifications

Item Number 1839079

Product Description TCB

Number of Pockets

Interior 13; 18 Tool Loops

Exterior 11

## Extra Features

Clear Vinyl ID Window Pocket; Shoulder Strap; Cover Flap

## Dimensions

Length 13-1/2"

Width 8-1/2"

Height 9"

Weight 4.5 lbs.



Three zippered pouches and two padded side pockets provide safe storage for your meter.



Tool Center Bag  
1839079

# HVAC/R REFRIGERANT TANK & UTILITY BACKPACK

Give yourself a hand with the Utility Backpack. Comfortably carry refrigerant or recovery tanks, or up to 50 lbs. of whatever the job calls for.



## Superior Versatility

Can carry up to 30-lb. refrigerant or recovery cylinders and serves as a knapsack to transport other materials to and from the jobsite.



## Secure Transport

A drawstring with a cord lock and flap with latch securely hold your materials in place during transport.



## Stay Organized

8-carabiner loops, a see-through pocket to display OSHA refrigerant labels and a pocket keep you together.



## Helps with the Heavy Lifting

Padded shoulder straps and back pads allow you to comfortably carry up to 50 lbs.



## Rugged and Durable

Designed to last with heavy-duty nylon thread, and puncture and abrasion-resistant nylon fabric.

## Product Specifications

Item Number 1891628

Product Description HVACBP

## Extra Features

External Pocket; See-Through Pocket; 8 Carabiner Loops

## Dimensions

Length 20"  
Width 12"  
Height 12"  
Weight 2.4 lbs.



Designed to carry 30-lb. refrigerant and recovery cylinders.



Serves as a knapsack to transport other materials.



# HVAC/R CARRYING STRAP

Let this Strap do some of your lifting. Clip on and carry refrigerant or recovery tanks comfortably and easily.



## Rugged and Durable

Heavy-duty nylon fabric and slip-resistant padding helps prevent the strap from sliding.



## Less Wasted Time

Steel carabiners easily clip to carry refrigerant or recovery cylinders and other essential materials to save trips and give you an extra arm.



## Helps with the Heavy Lifting

Shoulder strap is designed and tested to hold up to 50 lbs.

## Product Specifications

Item Number	1891625
Product Description	HVACSCS
<b>Dimensions</b>	
Length	50-1/2"
Width	3-3/4"
Height	1/2"
Weight	14 oz.



Easily hooks to refrigerant and recovery cylinders.



Attach the HVAC/R Carrying Strap to the two durable hoist points on all hilmer Vacuum Pumps.



# ZIPPER POUCH

The hilmor Zipper Pouch is your best bet for keeping track of all the small stuff on the jobsite - from small tools and accessories to receipts and other paperwork.



## Keep Organized

The hilmor Zipper Pouch can conveniently fit many hilmor tools, including the Punch Swage Set or Dual Readout Thermometer with two Thermocouple Clamps.



## Rugged and Durable

Designed with an inner liner to protect from water damage and a rivet on the outside so it can be clipped where it's needed.

## Product Specifications

Item Number	1839081
Product Description	ZP
Number of Pockets Interior	1
<b>Dimensions</b>	
Length	10-1/2"
Width	1/8"
Height	7"
Weight	3 oz.



Zipper Pouch  
1839081

# HVAC/R GENERAL PURPOSE GLOVES

No matter what the task, get a grip and protect your hands with these ruggedly reinforced gloves made to take on any job.



### Rugged and Durable

Stands up to HVAC/R applications with a breathable-fabric design, featuring a reinforced thumb, palm and fingertips to increase life and durability.



### Extra Comfort

A wrist strap easily adjusts for comfort while a form-fitting design provides fit and flexibility.

## Product Specifications

Item Numbers	1891606	1891607	1891624
Product Descriptions	GLOVEHVACM	GLOVEHVACL	GLOVEHVACXL
Sizes	MED	LG	XL
<b>Dimensions</b>			
Length	9-3/4"	9-7/8"	10"
Width	4-3/8"	4-7/16"	4-5/8"
Height	1/2"	1/2"	1/2"
Weight	5 oz.	5 oz.	5 oz.



HVAC/R General Purpose Gloves  
1891624

# HVAC/R SHEET METAL GLOVES

We don't need to tell you sheet metal can be sharp. Shield your hands from cuts with these gloves that are as tough as they are comfortable.



### Rugged and Durable

Stands up to sheet metal with cut-resistant fabric featuring a reinforced thumb, palm and fingertips to increase life and durability.



### Extra Comfort

A wrist strap easily adjusts for comfort while a form-fitting design provides fit and flexibility.

## Product Specifications

Item Numbers	1891463	1891469	1891592
Product Descriptions	GLOVESMM	GLOVESML	GLOVESMXL
Sizes	MED	LG	XL
<b>Dimensions</b>			
Length	9-3/4"	9-7/8"	10"
Width	4-3/8"	4-7/16"	4-5/8"
Height	1/2"	1/2"	1/2"
Weight	5 oz.	5 oz.	5 oz.



HVAC/R Sheet Metal Gloves  
1891592

# THESE TOOLS ARE BUILT FOR HVAC/R. JUST LIKE YOU.



hilmor's HVAC/R Starter Kit includes some of the most revolutionary new tools on the market. Tools to help you handle superheat and subcool with no sweat. Tools to help you flare and swage tubes without needing a third arm. All with the goal of helping you get in, get out and get on to the next job. Not to mention, get your foot in the door.



# HVAC/R STARTER KIT

Get started on the right foot with a few of hilmor's most forward-thinking tools.

## Dual Readout Thermometer 1839106

hilmor's Dual Readout Thermometer is the industry's first to offer two digital readouts to help simplify the calculation of superheat and subcool.

## 2-Valve Aluminum Manifold 1839134

This ruggedly durable Aluminum Manifold features a forged aluminum body and high-impact gauge boots.

## 60" Hose Set of 3 1839153

Our hoses are bulked up with an extra abrasion-resistant layer and designed to work with the newest high-pressure refrigerants.

## Quick-Engage Flare and Swage 1838947

Finally, a flaring tool that doesn't require a third arm. Two hands are all it takes to flare or swage in seconds.

## Tri-Tube Bender 1839027

From start to final bend, the hilmor Tri-Tube Bender has you covered. Color-coded sizing makes it simple to bend 1/4", 3/8" and 1/2" tubes.

## Service Wrenches 1839042, 1839046

Smart features that save your knuckles and your time. Plus, a Hex Key Adapter for liquid- and suction-based valves.

## Product Specifications

Item Number	1890995
Product Description	KITHVACR
<b>Dimensions</b>	
Length	20"
Width	15-1/4"
Height	16-1/2"
Weight	21.7 lbs.

## Deburrer 1839052

Whether it's inside or outside, copper or plastic, the hilmor Deburrer can smooth things over, including OD tubing from 1/4" to 1-5/8".

## Folding Hex Key Set 1839048

Get full socket contact with our slip-resistant Folding Hex Key Set. Sizes include 5/64" to 1/4".

## Inspection Mirror 1839051

Leaks can't hide anymore. With a handle that extends from 7-3/4" to 21-1/2", this telescoping mirror goes above and beyond.

## 3" Quick-Change Magnetic Nut Driver 1839054

Don't get driven nuts. Just drive them. This Nut Driver lets you quickly switch between 1/4" and 5/16", the two most common sizes.

## 9 in 1 Multi-Tool 1839053

Tackle any on-the-job challenge with square, hex and Phillips bits. Not to mention a handy valve core remover.

## Backpack Tool Bag 1839080

The hilmor Backpack Tool Bag includes 19 exterior and interior pockets. Plus, its sturdy, water-resistant bottom holds up in any climate.



HVAC/R Starter Kit  
1890995

# LIMITED WARRANTY

At hilmor, we have put the highest priority on thoughtful product design and manufacturing quality. That is why we guarantee our products to be free of material and workmanship defects for a period of time from purchase (see chart below). We get the tough conditions in which you work and have designed products to stand up to those challenges. Unfortunately, this warranty does not apply to product that has been damaged as a result of improper maintenance, accident or other misuse, or which fails to operate due to normal wear and tear.

Product Line	Time Period from Purchase
Electronics	Limited Three Years
Manifold Bar	Limited Lifetime
Analog Gauges	Limited One Year
Wireless Vacuum Gauge	Limited Two Years
Recovery Machine	Limited One Year
Hoses	Limited One Year
Bending Tools	Limited Lifetime
Flaring Tools	Limited Lifetime
Swaging Tools	Limited Lifetime
Tubing Cutters	Limited Lifetime
Sheet Metal and Duct Tools	Limited Lifetime
Driving Tools	Limited Lifetime
Vacuum Pumps	Limited Two Years
Digital Adjustable Torque Wrench	Limited Two Years
Valve Core Removal Tools	Limited One Year
Pliers, Wrenches and Wire Strippers	Limited Lifetime
Utility Knives	Limited Lifetime
Service Tools	Limited Lifetime
Fin Tools	Limited Lifetime
Inspection Mirrors	Limited Lifetime
Tool Storage Bags	Limited Lifetime
Power Tool Accessories, Deburring Tools, Gloves, Drill Bits	
Tube Brushes, Cutting Wheels and Blades	Limited 90 Days

All products, that are subject to warranty claims should be returned to the place of purchase along with proof of purchase showing the date of purchase. The distributor from whom the product was purchased will contact hilmor for next steps, which could include field scrap or return to the factory for analysis, and work with you on a repair, replacement or credit. Please contact hilmor Technical Services for general technical questions related to products or this warranty policy: **1-800-995-2222**.

**HILMOR MAKES NO OTHER WARRANTIES, EXPRESS OR IMPLIED, CONCERNING THE PRODUCT OR THE MERCHANTABILITY OR FITNESS THEREOF FOR ANY PURPOSE. IN NO EVENT SHALL HILMOR AND ITS AFFILIATES, SUCCESSORS AND ASSIGNS) BE LIABLE FOR INCIDENTAL, CONSEQUENTIAL OR PUNITIVE DAMAGES (OR LOST PROFITS), REGARDLESS OF THE NATURE OF THE CLAIM.**

# PRESSURE – TEMPERATURE CHART

ALL PRESSURES SHOWN ARE IN PSIG; RED PRINT = VACUUM (INCHES OF MERCURY)

F	R-12	R-22	R-134A	R-404A		R-407C		R-410A	R-502	C
				Vapor	Liquid	Vapor	Liquid			
-40	11	1	15	5	4	3	4	12	4	-40
-35	8	3	13	8	7	5	1	15	7	-37
-30	6	5	10	11	10	8	2	19	9	-34
-25	2	7	7	14	13	11	4	23	12	-32
-20	1	10	4	17	16	14	7	27	15	-29
-15	2	13	1	21	19	18	9	32	19	-26
-10	5	17	2	25	23	21	13	37	23	-23
-5	7	20	4	29	28	25	16	43	27	-21
0	9	24	7	34	32	30	20	49	31	-18
5	12	28	9	39	37	35	24	55	36	-15
10	15	33	12	45	42	40	28	62	41	-12
15	18	38	15	51	48	46	33	70	47	-9
20	21	43	18	57	55	52	38	78	52	-7
25	25	49	22	64	61	58	44	87	59	-4
30	29	55	26	71	68	65	50	97	66	-1
35	33	62	30	79	76	73	56	107	73	2
40	37	69	35	97	84	81	63	118	81	4
45	42	76	40	106	93	89	71	130	89	7
50	47	84	46	116	103	98	79	142	97	10
55	52	93	51	127	113	108	87	155	107	13
60	58	102	58	138	123	118	97	170	116	16
65	64	111	64	150	135	129	106	185	127	18
70	70	121	71	163	147	141	117	201	138	21
75	77	132	79	176	159	153	128	217	149	24
80	84	144	87	190	173	166	140	235	161	27
85	92	156	95	205	187	180	153	254	174	29
90	100	168	104	221	202	195	166	274	187	32
95	108	182	114	237	218	210	180	295	201	35
100	117	196	124	255	234	226	195	317	216	38
105	127	211	135	273	252	243	210	340	232	41
110	136	226	147	292	270	261	226	365	248	43
115	147	243	159	313	289	280	243	391	265	46
120	158	260	171	318	310	300	261	418	283	49
125	169	278	185	339	331	321	280	446	301	52
130	181	297	199	362	353	342	300	476	321	54
135	194	317	214	385	377	365	321	507	341	57
140	207	337	229	410	401	389	342	539	363	60
145	220	359	246	436	426	412	365	573	391	63
150	234	382	263	463	453	438	389	608	415	66

# hilmor<sup>®</sup>

**RETOOL + CONQUER<sup>™</sup>**



6650 Sugarloaf Parkway, #100  
Duluth, GA 30097  
1-800-995-2222  
[hilmor.com](http://hilmor.com)

© 2019 hilmor

H1026C F140061