



Echelon™ Series Modulating Gas Furnaces

Every Moment Deserves Coleman® Comfort

80% & Up to 98% AFUE Models



Comfort for all the times of your life



At last, home heating reaches a level you'll love

A cozy family gathering, a relaxing evening, a quiet winter's morning—your comfort needs change throughout the day. That's why Coleman® invented the Echelon™ modulating gas furnace to match your comfort level more closely by varying the heating rate continuously and precisely.

Infinite comfort levels



Don't adjust your lifestyle to different temperature levels. Instead, enjoy a comfortable temperature that matches your level of living. That's the idea behind the Coleman® Echelon™ modulating gas furnace. Traditional furnaces run at one or two heating stages. But the firing rate of the Echelon™ furnaces continuously modulate in .50 or .65% increments to save fuel by matching your comfort levels more exactly. See the adjacent page for further details on modulating furnace technology.

Greater care for your indoor air



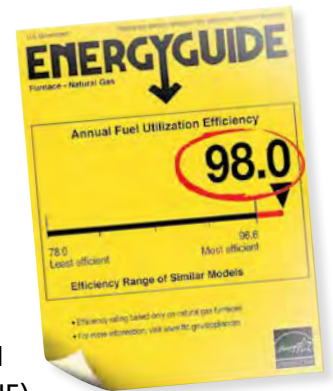
Variable-speed models feature an ECM fan motor option which circulates air for longer periods at a fraction of the cost. Longer run

times mean fewer hot and cold spots and longer periods of air filtering, resulting in cleaner and more comfortable air. Plus, fewer starts and stops make variable-speed models 24 times less noisy than conventional furnaces.



Comfort with a conscience

These days, energy costs and environmental issues concern everyone. As the ultimate Coleman® gas furnace design, Echelon™ modulating units can reduce energy costs nearly 40% compared to furnaces that are 20 years old. And, with up to a 98% Annual Fuel Utilization Efficiency (AFUE) rating on our high-efficiency models, they have earned one of the highest ratings in the industry.



You will also enjoy peace of mind knowing that your furnace is ENERGY STAR® qualified as one of the most energy-efficient furnaces you can buy!

EcoTrak™ customizes your comfort level

Now you can enjoy custom comfort regardless of whether you live in a dry, temperate or humid climate. That's because we use EcoTrak™ technology that allows your installer to set an operating cycle

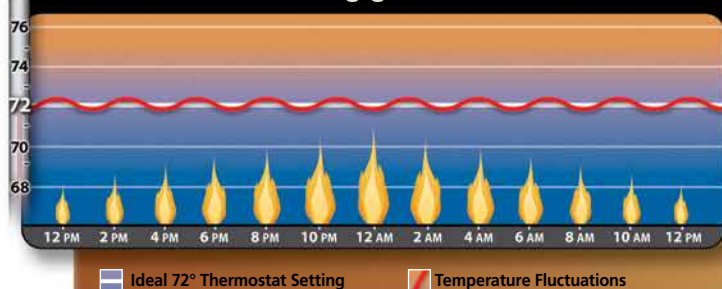
EcoTrak™ that works best in a particular climate.

Modulating technology to help you stay in your comfort zone...



The colder it is outside, the more heat your home loses, creating additional demand on your heating system. Depending on the time of day, and the type of furnace you have, your home can experience drastic temperature fluctuations. Understanding the differences between furnace types will help you make the right choice to stay in your comfort zone.

Modulating gas furnaces



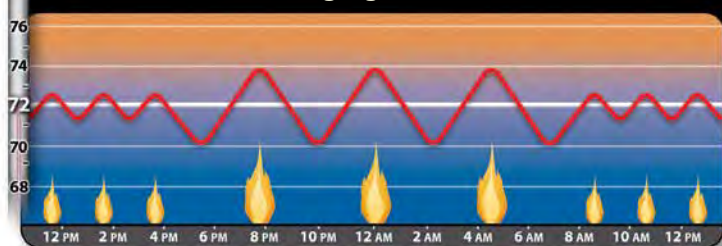
■ Ideal 72° Thermostat Setting ■ Temperature Fluctuations

The Coleman® Echelon™ modulating gas furnace has been designed to maintain your ideal temperature by modulating heating level in .50 or .65% increments to match the degree of comfort you need precisely. Comfort is dramatically increased as the furnace adjusts its level of operation up or down to offset the rate at which heat leaves your home.

Packed with great features:

- Precision temperature control
- Better energy efficiency
- Quieter operation

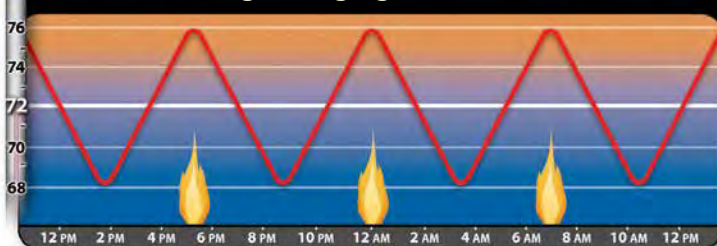
Two-stage gas furnaces



■ Ideal 72° Thermostat Setting ■ Temperature Fluctuations

Two-stage gas furnaces offer an intermediate level of performance. Operation varies between first and second stage based on demand. However, indoor temperature levels still fluctuate, relative to your thermostat setting.

Single-stage gas furnaces



■ Ideal 72° Thermostat Setting ■ Temperature Fluctuations

Traditional single-stage gas furnaces operate much like a light bulb—either on or off. This can create wide and uncomfortable temperature fluctuations in your home.

Warrantied for years of comfort

Every Coleman® system is backed with the best limited warranties available:

Standard Warranty

10 years on parts, lifetime on heat exchanger.

Must be registered online within 90 days of installation—otherwise the lifetime heat exchanger warranty reverts to a 20-year limited warranty and the 10-year parts warranty reverts to a 5-year limited warranty.



Premium System Warranty

(with purchase of approved matching air conditioner or heat pump)

10 years on parts, lifetime on heat exchanger* and compressor.

*For lifetime heat exchanger warranty, system must be registered online within 90 days of installation. If not registered within 90 days, the heat exchanger warranty reverts to a 20-year limited warranty.



How comfortable is your wallet?

By matching your Coleman® HVAC system with Coleman® HVAC variable-speed air handlers and furnaces, you will maximize energy efficiency and likely qualify for various rebates.

Ask your Coleman® HVAC Contractor about rebates offered in your area. And ask about Coleman® HVAC fans, filters, IAQ equipment and advanced controls to complete your system. Talking to your contractor will keep you informed, save you money and time, and protect your family's health—all part of Coleman® HVAC Comfort.



Financing plans that feel right

Ask your Coleman® HVAC Contractor about special financing options. Applying is easy, and upon approval, you'll enjoy low monthly payments and financing offers.



Visit our website

Learn how Coleman® HVAC products can improve your home comfort at www.colemanac.com. Our website is the perfect place to get acquainted with our wide range of products.

Have your Coleman® Contractor specify the system that performs best for your home

Echelon™ 80% AFUE Furnaces*

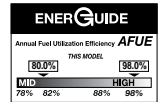
Nominal CFM (x 100)	MBH Input (x 100)	Width (inches)**	Model	AFUE
12	60	14-1/2	CPLC060A12MP12C	80%
12	80	17-1/2	CPLC080B12MP12C	80%
16	80	21	CPLC080C16MP12C	80%
16	100	21	CPLC100C16MP12C	80%
20	100	21	CPLC100C20MP12C	80%
20	120	21	CPLC120C20MP12C	80%

Echelon™ Up to 98% AFUE Furnaces

Nominal CFM (x 100)	MBH Input (x 100)	Width (inches)**	Model	AFUE
12	60	17-1/2	CP9C060B12MP12C	97.5%
12	80	17-1/2	CP9C080B12MP12C	97.5%
16	80	21	CP9C080C16MP12C	97.7%
16	100	21	CP9C100C16MP12C	97.7%
20	100	21	CP9C100C20MP12C	97.7%
20	120	24-1/2	CP9C120D20MP12C	98.0%

* Models available with LoNox.

** All units measure 33" high x 29-1/2" deep.



The Echelon™ 9.C models meet ENERGY STAR® requirements for energy efficiency.



The CP9C model is recognized as the Most Efficient of ENERGY STAR® 2013 when used with the Echelon™ Residential Communicating Control.



HEATING & AIR CONDITIONING

Coleman® and Coleman® are registered trademarks of The Coleman Company, Inc., used under license. Manufactured by Johnson Controls, Inc., 5005 York Drive, Norman, OK 73069, www.colemanac.com. ©2013 Johnson Controls, Inc. All rights reserved. Subject to change without notice. Form PUBL-6173-E-0713. Supersedes: PUBL-6173-D-0213. Printed in USA.