

Braeburn[®]



**Thermostats
Zoning Systems**

Thermostats



Thermostats

Builder Series

500 / 505 meGaswitch ® Mechanical.....	3
1020NC / 1025NC / 1220NC Non-Programmable.....	3
2020NC / 2220NC Programmable	3

NEW! Economy Series

1030 / 1230 Non-Programmable.....	4
2030 / 2230 Programmable	4

NEW! Premier Series

4030 / 4235	5
4020 Heat Only Hydronic	5

Deluxe Series Touchscreen

6425	6
------------	---

BlueLink® Wi-Fi

7205	7
BlueLink Smart Connect® App.....	8

BlueLink® Wireless

7500	9
------------	---

Thermostat Accessories	10
------------------------------	----

Thermostat Feature Comparison	20
-------------------------------------	----

FREE Contractor Branding	22
--------------------------------	----

Zoning Systems



Zone Control Panels

Economy Series

140202 2-Zone Control Panel	11
140303 3-Zone Control Panel	11

Premier Series

140221 2-Zone Control Panel	13
140332 3-Zone Control Panel	13
140404 4-Zone Expandable Control Panel	15
140424 2-Zone Expander Control Panel	15

Zone Control Dampers

Round Zone Dampers.....	17
Rectangular Zone Dampers.....	18
Zoning Systems Accessories	19
Zoning System Feature Comparison	21

2
Sq. In.
Display



Non-Programmable Thermostats

1020NC - 1 Heat / 1 Cool

1025NC - Heat Only

1220NC - 2 Heat / 1 Cool

2
Sq. In.
Display



Programmable Thermostats

2020NC - 1 Heat / 1 Cool

2220NC - 2 Heat / 1 Cool

BUILDER SERIES

Compatibility

- Single Stage Conventional or Heat Pump Systems
- Multistage Heat Pump Systems (1220NC, 2220NC)
- Multistage Conventional Systems (1220NC, 2220NC)
- 2-Wire Hydronic Zone Systems (1025NC: 2 or 3-Wire)
- Millivolt Systems

Features

- Large Display with Bright Blue Backlight
- Adjustable Temperature Limits for Multi-Family Housing
- Hardwire or Battery Powered
- Permanent Memory Retains Settings
- Low Battery Indicator
- Front Access Reset Button
- Compressor Short Cycle Protection
- Fahrenheit or Celsius Display Mode
- Adjustable Temperature Differential
- ESD Guard™ Electronic Circuitry
- Trilingual Packaging and Instructions

Additional Features (2020NC/2220NC)

- 7 Day, 5-2 Day or Non-Programmable
- Temporary Program Override
- Programmable Extended Hold Mode
- Filter Check Monitor
- Adaptive Recovery Mode (ARM™)

*Complete Thermostat Feature Comparison on Page 20.



FREE Color Contractor Branding on Quick Reference Instruction Card. See page 22.

Mechanical Thermostats



500
1 Heat / 1 Cool

505
Heat Only

1 YEAR
LIMITED
WARRANTY

RoHS
COMPLIANT

5 YEAR
LIMITED
WARRANTY

4.4
Sq. In.
Display



Non-Programmable Thermostats

1030 - 1 Heat / 1 Cool
1230 - 2 Heat / 1 Cool

4.4
Sq. In.
Display



Universal Programmable Thermostats

2030 - 1 Heat / 1 Cool
2230 - 2 Heat / 1 Cool

RVHS
COMPLIANT

5 YEAR
LIMITED
WARRANTY

ECONOMY SERIES

NEW!
Ultra-Slim
Design

Compatibility

- Single Stage Conventional or Heat Pump Systems
- Multistage Heat Pump Systems (1230, 2230)
- Multistage Conventional Systems (1230, 2230)
- 2-Wire Hydronic Zone Systems
- Millivolt Systems

Features

- Large Display with Bright Blue Backlight
- SmartLimit® Temperature Limits
- Hardwire or Battery Powered
- Permanent Memory Retains Settings
- Low Battery Indicator
- Adjustable Short Cycle Protection
- Fahrenheit or Celsius Display Mode
- Adjustable Temperature Differential
- ESD Guard™ Electronic Circuitry
- Installer Lock Mode
- Filter Check Monitor
- Trilingual Packaging and Instructions

Additional Features (2030/2230)

- 7 Day, 5-2 Day or Non-Programmable
- Temporary Program Override
- Programmable Extended Hold Mode
- Adaptive Recovery Mode (ARM™)

*Complete Thermostat Feature Comparison on Page 20.



4.4
Sq. In.
Display



NEW!
Ultra-Slim
Design

PREMIER SERIES

Compatibility

- Single Stage Conventional or Heat Pump Systems¹
- Multistage Heat Pump Systems¹
- Multistage Conventional Systems¹ (4235)
- 2 or 3-Wire Hydronic Zone Systems
- Millivolt Systems

Features

- 7 Day, 5-2 Day or Non-Programmable
- Large Display with Adjustable Backlight
- SmartLimit® Temperature Limits
- Auto or Manual Changeover¹
- Residential or Commercial Modes
- Hardwire or Battery Powered
- Permanent Memory Retains Settings
- Circulating Fan Mode¹
- Programmable Extended Hold Mode
- Programmable Fan Mode¹
- Adaptive Recovery Mode (ARM™)
- Installer Lock Mode
- Pre-Occupancy Purge Option¹
- User Selectable Service Monitors¹
- Indoor or Outdoor Remote Sensing¹
- Multi-Level Keypad Lockout
- Heat Pump Balance Points¹
- Auxiliary Heat Fossil Fuel Option¹
- Trilingual Packaging and Instructions
- Multi-Function Dry Contact Input for Occupancy Control, Condensate Monitoring or Door Switch Activation¹
- Dehumidification Control with Overcooling (4235)
- Humidification Control (4235)

Universal Programmable Thermostats

4030 - 2 Heat / 1 Cool

4235 - 3 Heat / 2 Cool
with Humidity Control

4020 - Heat Only Hydronic
(summer 2023)

Additional 4020 Features

- Minimum Boiler on Time
- Freeze Protection
- High/Low Floor Limits
- Indoor Remote Sensing
- Optional Remote Slab Sensing (see page 10)

*Complete Thermostat Feature Comparison on Page 20.



RVHS
COMPLIANT

5 YEAR
LIMITED
WARRANTY

¹Not available on 4020

12
Sq. In.
Display



Universal Touchscreen Thermostat

6425 - 4 Heat / 2 Cool
with Humidity Control 

SpeedBar® Multi-Function Button
Simplifies programming and set-up

Large 12 Sq. In. Touchscreen
with Oversized Characters
Easier to view and change settings

SpeedSet® Programming Mode
Quickly program all 7 days

Quick Reference Instruction Card
User instructions with FREE Color
Contractor Branding

DELUXE SERIES

Compatibility

- Single Stage Conventional or Heat Pump Systems
- Multistage Heat Pump Systems
- Multistage Conventional Systems
- 2-Wire Hydronic Zone Systems
- Millivolt Systems

Features

- 7 Day, 5-2 Day or Non-Programmable
- Auto or Manual Changeover
- Residential and Commercial Modes
- Hardwire or Battery Powered
- Permanent Memory Retains Settings
- Circulating and Programmable Fan Modes
- Separate User and Installer Reset Buttons
- User Selectable Service Monitors
- Indoor or Outdoor Remote Sensing
- Multi-Level Keypad Lockout
- Temporary Program Override
- Programmable Extended Hold Mode
- Adaptive Recovery Mode (ARM™)
- Trilingual Packaging and Instructions
- Heat Pump Balance Points
- Auxiliary Fresh Air Terminal
- Auxiliary Heat Fossil Fuel Option
- Dehumidification Control with Overcooling
- Humidification Control

*Complete Thermostat Feature Comparison on Page 20.

Contractors! Buy a Deluxe Series thermostat and get a FREE Braeburn thermostat guard or remote sensor.
See Accessories - page 10.



RVHS
COMPLIANT

5 YEAR
LIMITED
WARRANTY



FREE Color Contractor Branding on Quick Reference Instruction Card. See page 22.

BlueLink Smart Wi-Fi Thermostats

Wi-Fi Remote Access from Smartphone, Tablet or PC



Smart Wi-Fi Universal Thermostat

7205

**3 Heat / 2 Cool Heat Pump
2 Heat / 2 Cool Conventional**

Thermostat Features

- 7 Day, 5-2 Day or Non-Programmable
- Large 3 sq. in. Backlit Display
- Auto or Manual Changeover
- User and Installer Lock Modes
- SmartLimit® Temperature Limits
- Circulating Fan Mode
- Auxiliary Heat Fossil Fuel Option
- ★ Wi-Fi works without common (C) wire on most systems. Requires common (C) wire on all Heat Pump, Heat Only or Cool Only Systems

No Common (C) Wire Required for Wi-Fi on most systems*

Application Features

- Compatible with Virtually All Smartphones, Tablets or PC's
- Multi-Color Program Groups Simplify Scheduling
- Flexible Vacation and Holiday Scheduling
- Text and E-Mail Service and Temperature Alerts
- BlueLink QuickCopy® Allows User to Duplicate Program and Configuration to Other Thermostats
- QuickEdit Makes Schedule Changes Easy
- BlueLink SmartData® Energy Report Capability
- Monitor and Control Multiple Thermostats
- Easy Access Dealer Information
- Optional Geofencing for Increased Energy Savings

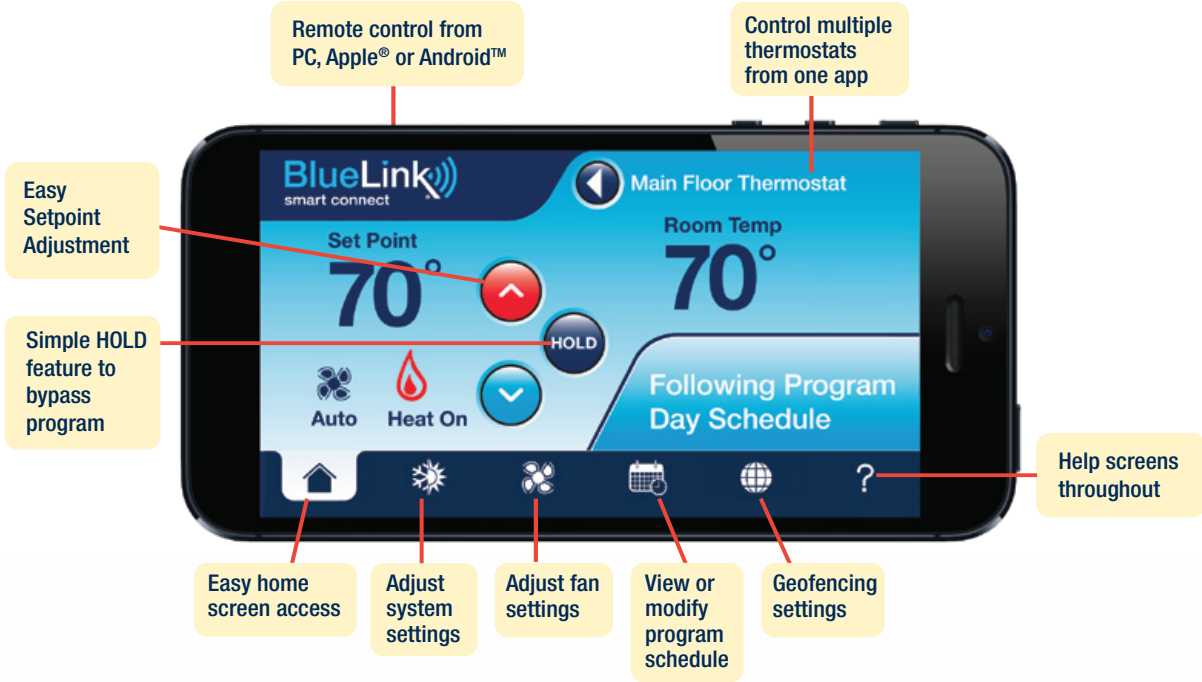
*Complete Thermostat Feature Comparison on Page 20.



Phone not included.



FREE Color Contractor Branding on Quick Reference Instruction Card. See page 22.

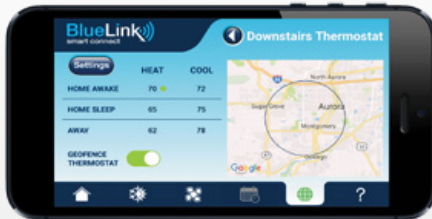


Multi-Color Program Groups with QuickEdit®

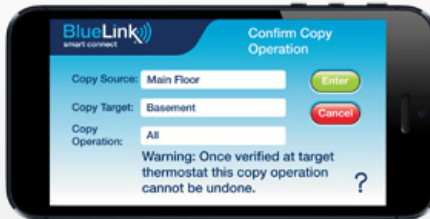
Simplifies program scheduling by allowing the user to group days.



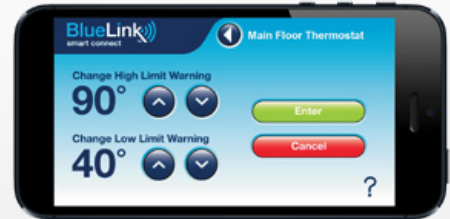
Geofencing



BlueLink QuickCopy® Feature



Service & Temp Alerts



BlueLink SmartData® Reports

Generate usage reports for your thermostat. Compatible with virtually all smartphones, tablets or PC's!



BlueLink Application Help Available:
www.bluelinksmartconnect.com
 Requires iOS or Android™ to connect



Compatible with Amazon Alexa
 Amazon Alexa is a trademark of Amazon.com, Inc.



Universal Wireless Thermostat Kit

7500 - 3 Heat / 2 Cool

*Complete Thermostat Feature Comparison on Page 20.

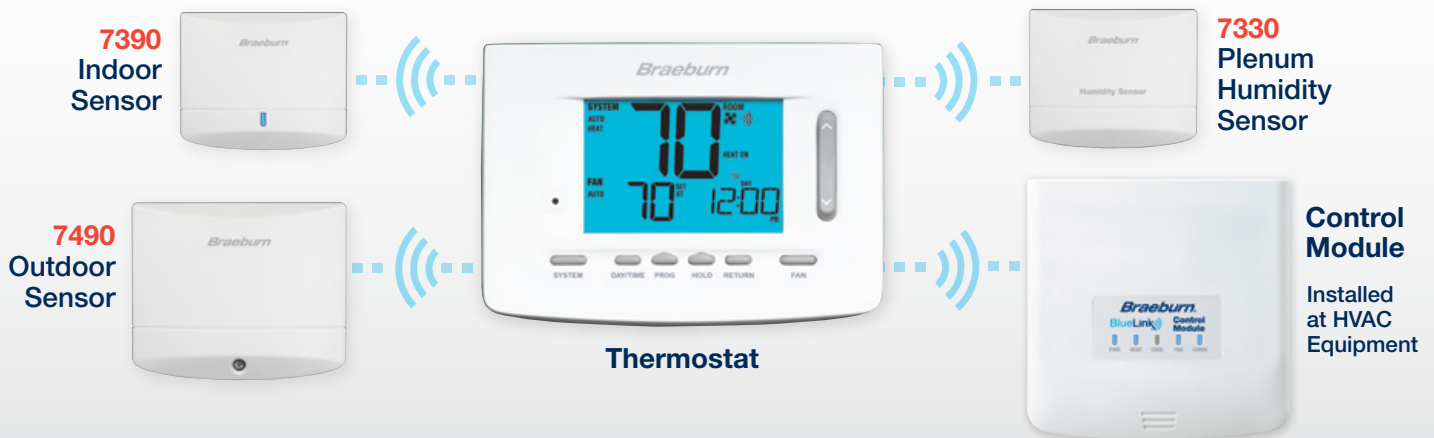
Thermostat Features

- 7 Day, 5-2 Day or Non-Programmable
- Large Display with Bright Blue Backlight
- Auto or Manual Changeover
- Residential or Commercial Modes
- Battery Operated for Total Installation Flexibility
- Compatible with 2 or 3-Wire Hydronic Systems
- Heat Pump Balance Points
- Auxiliary Heat Fossil Fuel Option
- Programmable Fan Mode
- R and C Terminals for Optional 24 Volt Operation
- Adjustable Temperature Limits
- Multi-Level Keypad Lockout

Wireless Features

- Superior Wireless Range
- Battery Life Exceeds Virtually All Competitive Models
- Includes Return Air Sensor for Default Temperature Control Even if Batteries are Drained
- Connect up to 4 Optional Wireless Indoor Sensors for Remote Temperature Sensing
- Optional Wireless Outdoor Sensing for Outdoor Temperature Display or Balance Point Control
- Optional Wireless Humidity Plenum Sensor for Whole-House Humidification Control
- Affordable Solution for Most Thermostat Applications

Total Installation Flexibility



RVHS
COMPLIANT

5 YEAR
LIMITED
WARRANTY



FREE Color Contractor Branding on Quick Reference Instruction Card. See page 22.

Thermostat Accessories

Contractors! Buy a model 6425 Touchscreen thermostat and get a FREE thermostat guard or wired remote sensor!



5390 Wired Remote Indoor Sensor

- Contemporary style for any decor
- For use with compatible Braeburn thermostats
- Sense range of 40° to 99°F

5490 Wired Remote Outdoor Sensor

- Mounts outdoors up to 200 feet away
- Enables outdoor control functions on compatible Braeburn thermostats
- Sense range of -40° to 120°F

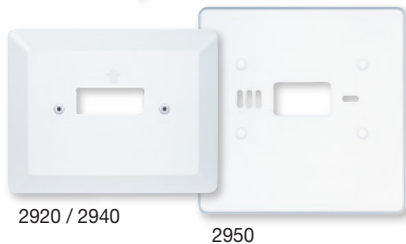


5970 Thermostat Guard

- Universal—fits virtually all thermostats
- Replaces over 100 competitive models
- Tamper resistant design
- Two keys Included
- Fits thermostats up to 7.3"W x 5.25"H x 1.8"D

165 Construction Thermostat

- Install in place of standard 24 Volt AC thermostat during construction
- Maintains fixed temperature set point of 65° heat
- Sturdy enclosure protects switch from drywall dust, paint and mudding



2920/2940* Vertical Wall Plate

- Adapts vertical J box to horizontal mount
- Sturdy two piece construction
- 6.5"W x 5.13"H (2920)
- 6.5"W x 5.5"H (2940)

2950 Universal Wall Plate

- Covers mounting marks from old thermostats
- Use with all Braeburn digital thermostats
- 6.5"W x 6.5"H

*2940 fits new Economy / Premier Series models.

ASTM30M Slab Sensor²

- 3 Meter Cable

ASTM40M Slab Sensor²

- 4 Meter Cable

BlueLink[®] Wi-Fi and Wireless Accessories



7390 Wireless Remote Indoor Sensor¹

- Sense temperature at remote location or average with thermostat
- Up to 4 wireless remote indoor sensors can be connected
- Front LED light shows sensor status
- Requires 2 "AA" Alkaline batteries (included)



7490 Wireless Remote Outdoor Sensor¹

- Display outdoor temperature
- Use for heat pump balance point control
- 1 wireless remote outdoor sensor can be connected
- Requires 2 "AA" Lithium batteries (included)



7330 Wireless Remote Humidity Sensor¹

- Controls humidifier or dehumidifier
- Mounts directly to return air plenum
- 1 wireless remote humidity sensor can be connected
- 24 VAC Powered



7340 Share-a-Wire[®] Module

- For use with BlueLink[®] Wi-Fi Thermostats
- Provides a common "C wire" connection on a 4-wire system
- Install near system control board

¹For use with model 7500 - a maximum of 4 wireless remote sensors can be connected. ²For model 4020 only.



2-Zone Control Panel
140202
2 Heat / 1 Cool



3-Zone Control Panel
140303
3 Heat / 2 Cool

ECONOMY SERIES

Compatibility

- Single Stage Conventional or Heat Pump Systems
- Multistage Conventional or Heat Pump Systems
- Single Stage Conventional Thermostats - For Lower Cost
- Power Open, Power Close or Spring Return Dampers

Features

- Sleek, Low Profile Design
- Quick Connect Terminals Speed Installation
- On-Board Emergency Heat Switch
- Ability to Connect External Emergency Heat Switch
- Selectable Zone Priority
- Fan Purge Into Last Calling Zone
- Easy-Set Dip Switches
- Heavy Duty 10-Amp Relays
- Short Cycle Protection Jumper
- Zone Calling Status LED's

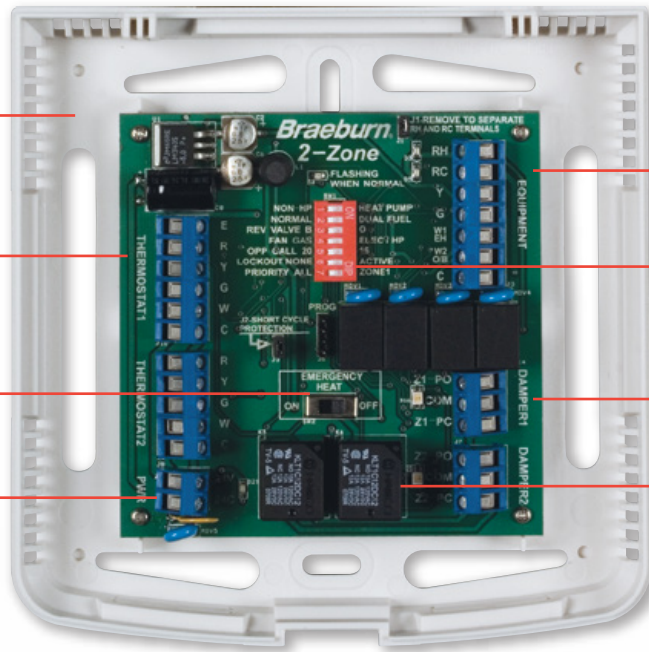
Additional Features (140303)

- On-Board LED Display
- Supply Air Sensor Included
- Adjustable Purge Control
- Thermostat Status LED's
- Equipment Status LED's
- 2-Stage Fan Control
- Advanced Staging

***Complete Zoning Feature Comparison on Page 21.**



140202



Flexible System Options

Controls conventional, heat pump, electric, and dual fuel systems

Thermostat Terminals

Use with conventional 4 or 5 wire thermostats

Emergency Heat Switch

With remote terminals

Power Terminals

Accepts standard 24 VAC power from transformer. Built in self-resetting fuse helps protect panel

Equipment Terminals

Simple equipment connections

Easy-Set Dip Switches

Select system preferences

Damper Terminals

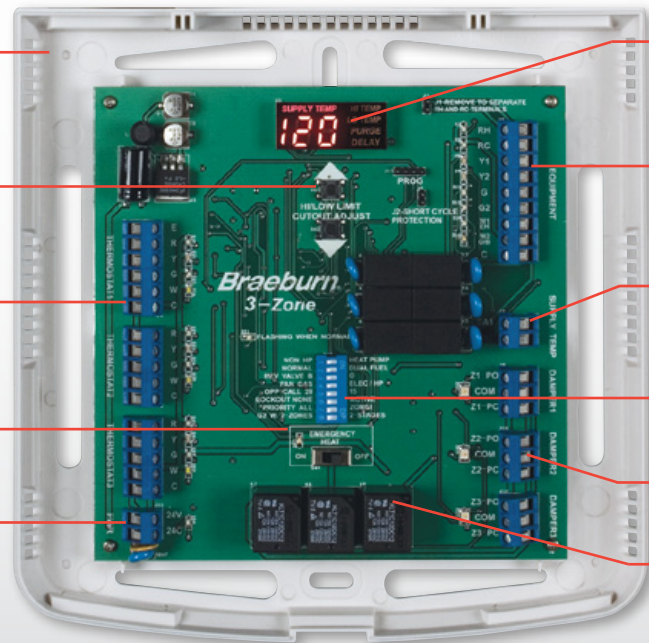
With LED indicators

Heavy Duty Relays

10-Amp capacity for extra durability

Compact 6" x 6" Housing

140303



Flexible System Options

Controls conventional, heat pump, electric, and dual fuel systems

Adjustable Purge Control

Maximizes economy and occupant comfort

Thermostat Terminals

Use with conventional 4 or 5 wire thermostats

Emergency Heat Switch

With remote terminals

Power Terminals

Accepts standard 24 VAC power from transformer. Built in self-resetting fuse helps protect panel

LED Display

Easy to read LED display shows system temperature and purge status

Equipment Terminals

Simple equipment connections with LED status indicators

Supply Air Sensor

Monitors plenum temperature and provides adaptive staging

Easy-Set Dip Switches

Select system preferences

Damper Terminals

With LED indicators

Heavy Duty Relays

10-Amp capacity for extra durability

Compact 8" x 8" Housing



2-Zone Control Panel

140221 - 2 Heat / 1 Cool



3-Zone Control Panel

140332 - 3 Heat / 2 Cool

PREMIER SERIES

Compatibility

- Single Stage Conventional or Heat Pump Systems
- Multistage Conventional or Heat Pump Systems
- Single Stage or Multistage Thermostats
- Power Open, Power Close or Spring Return Dampers

Features

- Large Display with Bright Blue Backlight
- Push-In Terminals For Easy Wiring
- On-Board Emergency Heat Switch
- Ability to Select Emergency Heat From Thermostat
- Selectable Zone Priority
- Adjustable Purge Control
- Built-In Test Mode
- Easy Setup and Configuration
- Heavy Duty 10-Amp Relays
- Flexible Staging Controlled by Panel or Thermostats
- Balance Point Control with Optional Outdoor Sensor
- Auxiliary Heat Fossil Fuel Option
- System Reset Button
- Thermostat Status LED's
- Equipment Status LED's
- Zone Calling Status LED's

Additional Features (140332)

- Includes Optional Supply Air Sensor For Limit Protection
- 2-Stage Fan Control

*Complete Zoning Feature Comparison on Page 21.



140221

Flexible System Options

Controls conventional, heat pump, electric, and dual fuel systems

Flexible Thermostat Options

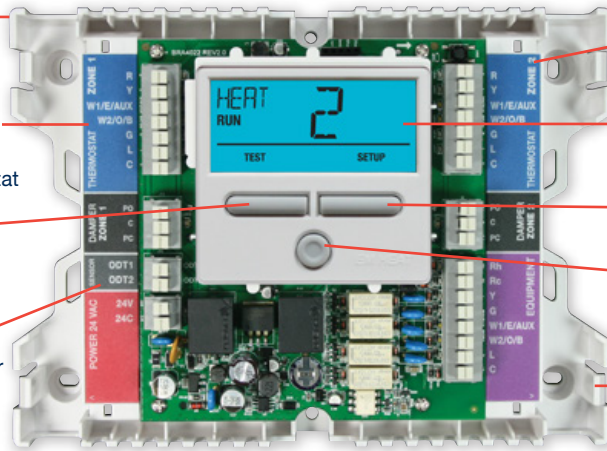
Works with virtually any low voltage heat pump or conventional thermostat

Built In Test Mode

Test all dampers and equipment from panel

Outdoor Sensor Terminals

Connect to Braeburn outdoor sensor for heat pump balance point control



Thermostat Terminals

Push-in wiring terminals with LED status indicators

Large Display

3 sq. in. backlit display

Easy 2 Button Setup

Set up and test from main display

Emergency Heat Button

Panel mounted button and selectable thermostat emergency heat control

Professional Appearance

Wire along side and underneath with multiple wire tie points

Compact 8" x 6" Housing

140332

Flexible System Options

Controls conventional, heat pump, electric, and dual fuel systems

Built In Test Mode

Test all dampers and equipment from panel

Damper Terminals

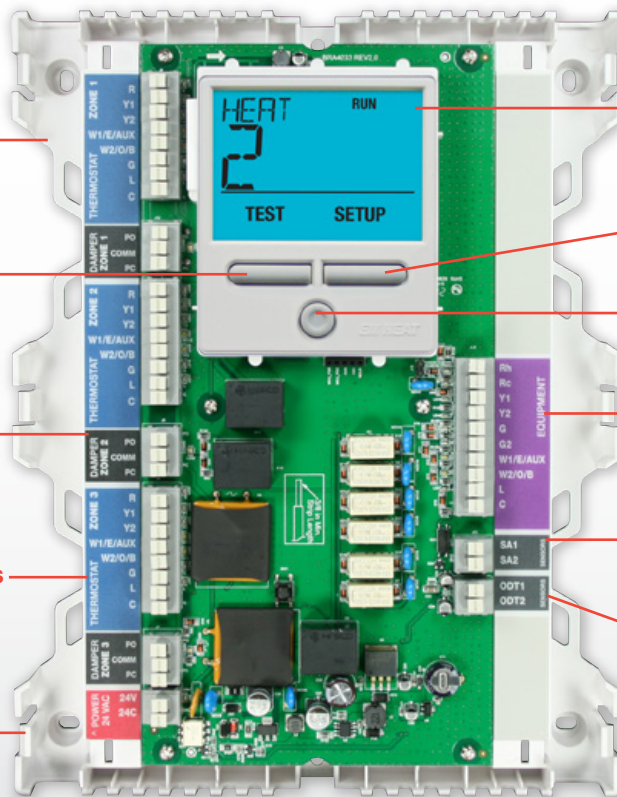
Push-in wiring terminals with LED status indicators

Flexible Thermostat Options

Works with virtually any low voltage heat pump or conventional thermostat

Professional Appearance

Wire along side and underneath with multiple wire tie points



Large Display

5.5 sq. in. backlit display

Easy 2 Button Setup

Set up and test from main display

Emergency Heat Button

Panel mounted button and selectable thermostat emergency heat control

Equipment Terminals

Simple push-in wiring terminals with LED status indicators

Supply Air Sensor (optional)

Stainless steel sensor controls high and low temperature cutout

Outdoor Sensor Terminals

Connect to Braeburn outdoor sensor for heat pump balance point control

Compact 8" x 10" Housing



4-Zone Expandable Control Panel

140404 - 4 Heat / 2 Cool

Use with 140404 Zone Panel



2-Zone Expander Panel

140424 - 4 Heat / 2 Cool

PREMIER SERIES

Compatibility

- Single Stage Conventional or Heat Pump Systems
- Multistage Conventional or Heat Pump Systems
- Single Stage or Multistage Thermostats
- Power Open, Power Close or Spring Return Dampers

Features

- Expandable up to 32 Zones
- Large Display with Bright Blue Backlight
- Includes Supply Air Sensor for Staging and Limit Protection
- Push-In Terminals For Easy Wiring
- On-Board Emergency Heat Switch
- Ability to Select Emergency Heat From Thermostat
- Selectable Zone Priority
- Adjustable Purge Control
- Built-In Test Mode
- Easy Setup and Configuration
- Heavy Duty 10-Amp Relays
- Flexible Staging Controlled by Panel or Thermostats
- Balance Point Control with Optional Outdoor Sensor
- Auxiliary Heat Fossil Fuel Option
- System Reset Button
- Fire Alarm Terminals
- 2-Stage Fan Control
- Thermostat Status LED's
- Equipment Status LED's
- Zone Calling Status LED's

Additional Features (140424)

- Add Zones in Affordable 2-Zone Increments
- Installs Up to 500 Ft. from Main Panel
- Stacks Neatly with Main Panel

*Complete Zoning Feature Comparison on Page 21.



140404

Flexible System Options

Controls conventional, heat pump, electric, and dual fuel systems

Built In Test Mode

Test all dampers and equipment from main panel

Flexible Thermostat Options

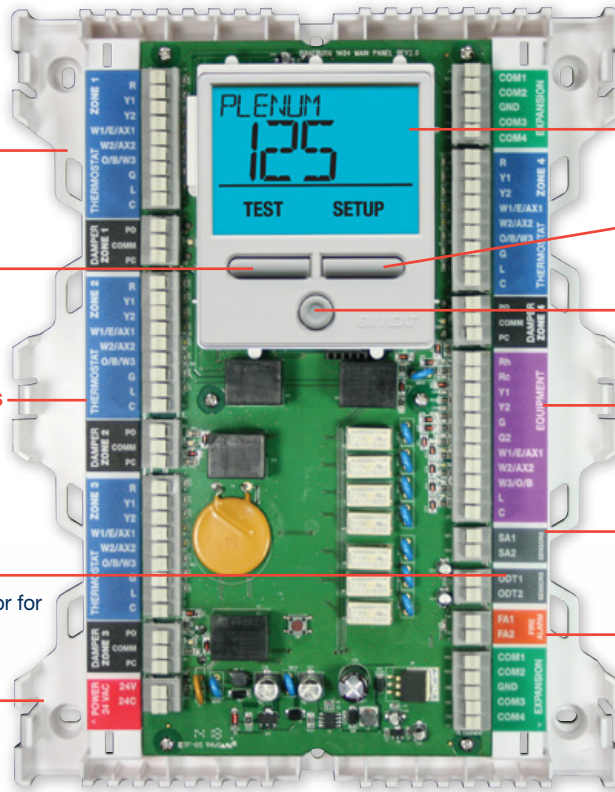
Works with virtually any low voltage heat pump or conventional thermostat

Outdoor Sensor Terminals

Connect to Braeburn outdoor sensor for heat pump balance point control

Professional Appearance

Wire along side and underneath with multiple wire tie points



Large Display

5.5 sq. in. backlit display

Easy 2 Button Setup

Set up and test from main display

Emergency Heat Button

Panel mounted button and selectable thermostat emergency heat control

Equipment Terminals

Simple push-in wiring terminals with LED status indicators

Supply Air Sensor Included

Stainless steel sensor helps control staging and high / low temperature cutout

Fire Alarm Terminals

Selectable for normally open or closed

Compact 8" x 10" Housing

140424

Flexible System Options

Install up to 500 feet from main panel

Flexible Thermostat Options

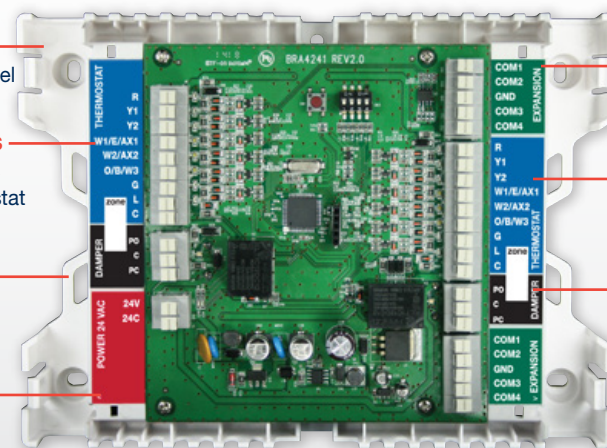
Works with virtually any low voltage heat pump or conventional thermostat

Professional Appearance

Wire along side and underneath with multiple wire tie points

Power Terminals

Accepts standard 24 VAC power from transformer. Built in self-resetting fuse helps protect panel



Easy to Wire

Use standard 5-wire thermostat wire from panel to panel

Thermostat Terminals

Push-in wiring terminals with LED status indicators

Damper Terminals

Push-in wiring terminals with LED status indicators

Easy Setup

Set zone number on main panel

Compact 8" x 6" Housing

Round Zone Dampers

Power Open / Power Close

- For use as zone or bypass damper • 24 VAC 4 VA 3-wire universal operation



Power Open / Power Close

Power Open Power Close	Diameter (Inches)	Length (Inches)	Power Open Power Close	Diameter (Inches)	Length (Inches)
109005	5	11.25	109012	12	11.75
109006	6	11.25	109014	14	13.75
109007	7	11.25	109016	16	15.75
109008	8	11.25	109018	18	17.75
109009	9	11.25	109020	20	19.75
109010	10	11.25	—	—	—



Spring Return

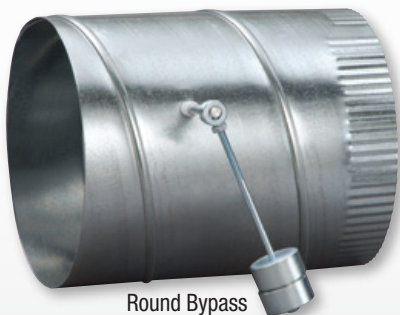
Spring Return

- 24 VAC 8 VA 2-wire universal operation
- Available in Power Close / Spring Return and Power Open / Spring Return

Static Bypass

- Vertical or horizontal mounting
- Reversible control for flexible mounting

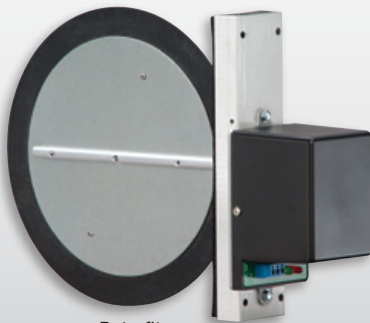
Power Close Spring Return	Power Open Spring Return	Static Bypass	Diameter (Inches)	Length (Inches)
119004	129004	-	4	9.75
119005	129005	-	5	9.75
119006	129006	119106	6	9.75
119007	129007	119107	7	9.75
119008	129008	119108	8	9.75
119009	129009	119109	9	9.75
119010	129010	119110	10	9.75
119012	129012	119112	12	11.75
119014	129014	119114	14	13.75
119016	129016	119116	16	15.75
119018	129018	119118	18	17.75
119020	129020	119120	20	19.75



Round Bypass

Retrofit (PO/PC)

24 VAC 4 VA 3-wire universal operation



Retrofit

Round Retrofit (PO / PC)	Diameter (Inches)	Round Retrofit (PO / PC)	Diameter (Inches)
128004	4	128007	7
128005	5	128008	8
128006	6	128010	10



Rectangular Zone Dampers

Power Open / Power Close

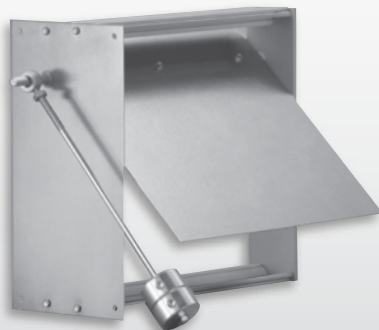
- For use as zone or bypass damper
- 24 VAC 4 VA universal operation



Power Open /
Power Close



Power Close /
Spring Return



Rectangular
Bypass

Height in Inches*

	8	10	12	14	16
8	100808	—	—	—	—
10	101008	101010	101012	101014	—
12	101208	101210	101212	101214	—
14	101408	101410	101412	101414	—
16	101608	101610	101612	101614	101616
18	101808	101810	101812	101814	101816
20	102008	102010	102012	102014	102016
22	102208	102210	102212	102214	102216
24	102408	102410	102412	102414	102416
26	102608	102610	102612	102614	102616
28	—	—	—	102814	102816
30	—	—	—	103014	103016

Width in Inches

All motors are mounted on the Height Dimension

* Larger heights available. Contact factory for availability.

Power Close / Spring Return

- 2 wire installation
- 24 VAC 8 VA universal operation

Height in Inches*

	8	10	12	14	16
8	110808	—	—	—	—
10	111008	111010	111012	111014	—
12	111208	111210	111212	111214	—
14	111408	111410	111412	111414	—
16	111608	111610	111612	111614	111616
18	111808	111810	111812	111814	111816
20	112008	112010	112012	112014	112016
22	112208	112210	112212	112214	112216
24	112408	112410	112412	112414	112416
26	112608	112610	112612	112614	112616
28	—	—	—	112814	112816
30	—	—	—	113014	113016

Width in Inches

All motors are mounted on the Height Dimension

* Larger heights available. Contact factory for availability.

Rectangular Static Bypass

Height in Inches

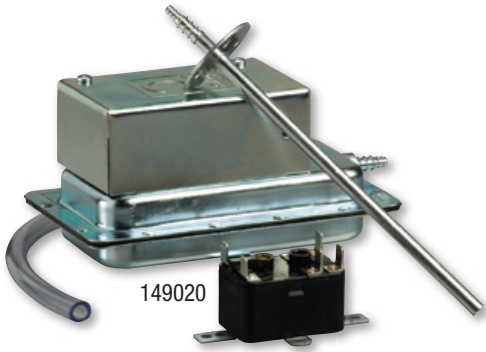
	8	10	12
12	131208	131210	131212
20	132008	132010	—

Width in Inches



Zoning Systems Accessories

Braeburn Zoning Accessories are designed to give years of performance in demanding zoning applications. Complete the HVAC installation with the full line of Braeburn thermostats and guards.



149020 Static Pressure Control

The Braeburn static pressure control is designed to mount on vertical surfaces. Powered from the zone panel transformer, this unit automatically controls the plenum bypass damper by monitoring system pressure as zones close and open.

Features

- Used to control plenum bypass air volume
- Reduces bypass problems in mismatched zones
- Includes relay and measuring pitot tube

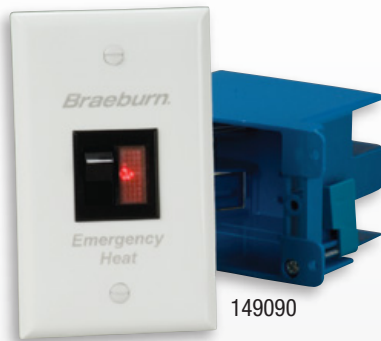


149040 Zoning System Transformer

Braeburn zoning transformers have 120 VAC input and 24 VAC output. UL listed and convenient mounting features for easy installation.

Features

- 40 VA, 120 VAC
- Includes mounting plate



Emergency Heat Switch Kit

These kits are the finishing touch to any zoning system installation. More convenient than the remote switch on the zone panel, both kits include a laser engraved wall plate and handy box.

Features

- 149090 features a commercial quality lighted rocker switch
- 149091 features a standard switch



Replacement Parts

- 149125** Replacement Motor for PO/PC Dampers (Manufactured 2012 to June 2019)
- 149126** Replacement Motor for Round PO/PC Dampers (Manufactured after June 2019)
- 149127** Replacement Motor for Rectangular PO/PC Dampers (Manufactured after June 2019)
- 149145** Replacement Motor for Spring Return (SR) Dampers (Manufactured after 2012)
- 149156** Replacement Supply Air Sensor



	MODEL		STAGING		PROGRAM			APPLICATION							BRAEBURN THERMOSTAT FUNCTIONS AND FEATURES															COMPETITIVE CROSS REFERENCE								
	Braeburn Model No.	Conventional	Heat Pump	Non-Prog.	5-2 Day	7 Day	Gas, Oil, Electric	Heat Pump	Millivolt	Hydronic Systems 2 or 3 Wire	Battery / Hardwire	Wi-Fi	Wireless	Display Size (sq. in.)	Blue Backlight	Adjustable Differential(s)	Quick Reference Instruction Card	Removable Face Plate	Permanent Memory	Adaptive Recovery Mode	Circulating Fan	Service Monitor(s)	Auto Changeover	Keypad Lockout	Temperature Limits	Indoor / Outdoor Remote Sensing	Wireless Remote Sensing	Dual Fuel Capable	Programmable Fan	Balance Points	Economizer	Humidity Control	Residential and Commercial Modes	Dry Contact	Warranty (Years)	Honeywell®	Emerson®	
MECHANICAL	500	1/1	1/1	•	-	-	•	•	•	2	H	-	-	-	-	-	-	-	-	-	-	-	-	-	-	-	-	-	-	-	-	-	-	-	-	1	T8034N, T834N T87N	1E56N
	505	1/0	-	•	-	-	•	-	•	2	H	-	-	-	-	-	-	-	-	-	-	-	-	-	-	-	-	-	-	-	-	-	-	-	-	1	T822K, T827K	1E30, 1E50, 1C20
NON-PROGRAMMABLE	1020NC	1/1	1/1	•	-	-	•	•	•	2	•	-	-	2	•	•	•	-	•	-	-	-	-	•	-	-	-	-	-	-	-	-	-	-	-	5	TH1110, TH3110	1F78-144, 1E78-144
	1025NC	1/0	-	•	-	-	•	-	•	2/3	•	-	-	2	•	•	•	-	•	-	-	-	-	•	-	-	-	-	-	-	-	-	-	-	-	5	TH1100	1E78-140
	1030	1/1	1/1	•	-	-	•	•	•	2	•	-	-	4.4	•	•	-	•	•	-	-	•	-	•	-	-	-	-	-	-	-	-	-	-	5	TH3110, TH5110	1F83C-11NP, 1F86-0244	
	1220NC	2/1	2/1	•	-	-	•	•	•	2	•	-	-	2	•	•	•	-	•	-	-	-	-	•	-	-	-	-	-	-	-	-	-	-	-	5	TH1210, TH3210	1F79-111
	1230	2/1	2/1	•	-	-	•	•	•	2	•	-	-	4.4	•	•	-	•	•	-	-	•	-	•	-	-	-	-	-	-	-	-	-	-	-	5	TH3210, TH5220	1F83H-21NP, 1F89-0211
PROGRAMMABLE	2020NC	1/1	1/1	•	•	•	•	•	•	2	•	-	-	2	•	•	•	-	•	•	-	•	-	•	-	-	-	-	-	-	-	-	-	-	-	5	TH2110, TH4110	1F78-151, 1E78-151
	2030	1/1	1/1	•	•	•	•	•	•	2	•	-	-	4.4	•	•	-	•	•	-	•	-	•	-	•	-	-	-	-	-	-	-	-	-	-	5	TH4110	1F83C-11PR, 1F80-0261 1F80-0224
	2220NC	2/1	2/1	•	•	•	•	•	•	2	•	-	-	2	•	•	•	-	•	•	-	•	-	•	-	-	-	-	-	-	-	-	-	-	-	5	TH2210, TH4210	1F82-261, 1F72-151
	2230	2/1	2/1	•	•	•	•	•	•	2	•	-	-	4.4	•	•	-	•	•	-	•	-	•	-	•	-	-	-	-	-	-	-	-	-	-	5	TH4210	1F83H-21PR, 1F82-0261
	4020 ⁴	1/0	-	•	•	•	•	-	-	2/3	•	-	-	4.4	•	•	-	•	•	-	-	-	•	•	• ⁵	-	-	-	-	-	-	-	-	•	-	5	TH6100AF	-
	4030	1/1	2/1	•	•	•	•	•	•	2/3	•	-	-	4.4	•	•	-	•	•	•	•	•	•	•	•	•	-	•	•	•	-	-	•	•	5	TH6110, TH6210	1F85U-22PR, 1F80-0471	
	4235	2/2	3/2	•	•	•	•	•	•	2/3	•	-	-	4.4	•	•	-	•	•	•	•	•	•	•	•	•	-	•	•	•	-	•	•	•	5	TH6220, TH6320	1F85U-42PR, 1F85-0471 1F85-0477, 1F85-0422	
TOUCHSCREEN	6425	3/2	4/2	•	•	•	•	•	•	2	•	-	-	12	•	•	•	-	•	•	•	•	•	•	•	-	•	•	•	•	•	•	•	-	5	TH8321	1F95-1291	
BLUELINK®	7205	2/2	3/2	•	•	•	•	•	•	2	•	•	-	3	•	•	•	-	•	•	•	•	•	•	-	-	•	-	-	-	-	-	-	-	5	TH6320WF, TH6220WF	1F86U-42WF	
	7500	2/2	3/2	•	•	•	•	•	•	2/3	• ²	-	•	5	•	•	•	•	•	•	-	•	•	•	•	•	•	•	•	-	• ³	•	-	-	5	YTH5320R, YTH6320R	1F98EZ-1621	

¹24 VAC required for Wi-Fi ²Control module requires 24 VAC ³Requires 7330 remote sensor ⁴Summer 2023 ⁵Indoor Only Verify specific application requirements. All trademarks are the property of their respective owners. Product specifications may change without notice. ©2023 Braeburn Systems LLC • All Rights Reserved.

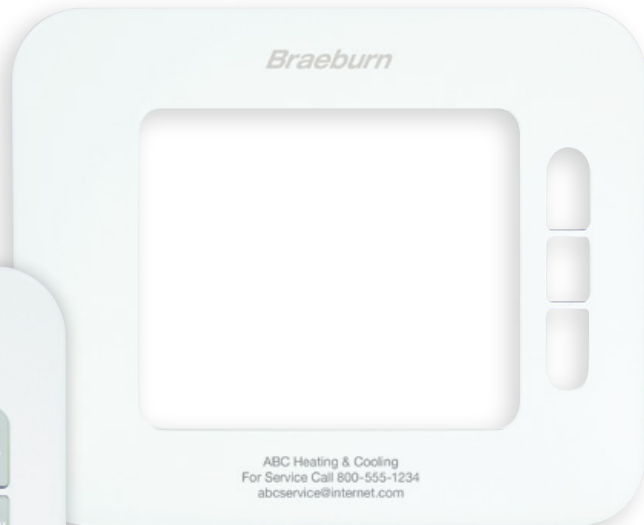
MODEL	ZONES	STAGING		THERMOSTATS				DAMPERS			POWER	BRAEBURN ZONING FUNCTIONS AND FEATURES																COMPETITIVE CROSS REFERENCE									
		Conventional	Heat Pump	Single Stage Conventional	Multi-Stage Conventional	Single Stage Heat Pump	Multi-Stage Heat Pump	Power Open / Power Close	Power Open / Spring Return	Power Close / Spring Return		LCD Display Size (Sq. In.)	Expandable up to 32 Zones*	Heavy-Duty 10 Amp Relays	Supply Air Sensor Capable	Supply Air Sensor Included	Emergency Heat from Thermostat	On-Board Emergency Heat Switch	Selectable Zone Priority	Adjustable Fan Purge	Thermostat Status LED's	Equipment Status LED's	Zone Calling Status LED's	2-Stage Fan Control (G2)	Push-In Wiring Terminals	Staging by Panel	Staging by Thermostats	Outdoor Sensor Capable	Fire Alarm Terminals	Built-In Test Mode	System Reset Button	Warranty (Years)	Honeywell®	EWC®	ZoneFirst®	AprilAire®	
140202	2-Zone	2/1	2/1	•	-	-	-	•	•	•	24 VAC	-	-	•	-	-	-	-	-	-	•	-	-	•	-	-	-	-	-	-	-	-	5	-	-	MMP2	6202
140303	3-Zone	2/2	2/2	•	-	-	-	•	•	•	24 VAC	-	-	•	•	•	-	•	•	•	•	•	•	-	•	-	-	-	-	-	-	5	-	NCM300	MMP3, MMZ3	6203, 6303	
140221	2-Zone	2/1	2/1	•	•	•	•	•	•	•	24 VAC	3	-	•	-	-	•	•	•	•	•	•	-	•	•	•	•	-	•	•	5	HZ211	-	-	6302		
140332	3-Zone	2/2	3/2	•	•	•	•	•	•	•	24 VAC	5.5	-	•	•	•	•	•	•	•	•	•	•	•	•	•	-	•	•	5	HZ311, HZ332	BMPlus3000	H32, H32P	6303, 6403			
140404	4-Zone Expandable	3/2	4/2	•	•	•	•	•	•	•	24 VAC	5.5	•	•	•	•	•	•	•	•	•	•	•	•	•	•	•	•	•	5	HZ432	UZO, BMPlus	MZP4, MZS4, MDP3	6404			

*Requires 140424 2-Zone Expansion Panel.

Verify specific application requirements. All trademarks are the property of their respective owners. Product specifications may change without notice. ©2023 Braeburn Systems LLC • All Rights Reserved.

FREE Contractor Branding

FREE Custom Faceplates Fits All Braeburn Economy and Premier Series thermostats!



- Visit www.braeburnonline.com/contractor-branding
- Provide 3 lines of text (no logos) - 30 characters per line
- Contractors will receive 48 custom branded thermostat faceplates for FREE, with no set-up fees or branding charges.
- Please allow 2-3 weeks for delivery

With Braeburn, there are no minimum purchase requirements for the contractor to advertise 24 hours a day in customers' homes. Your contact information will be readily available when it is time for maintenance or equipment repair.

FREE Quick Reference Cards with Color Logo

Available for Builder Series, Deluxe Series and BlueLink® thermostats.

- Visit www.braeburnonline.com/contractor-branding
- Upload your high resolution logo in TIF, JPG or EPS format
- Contractors will receive 50 full color Contractor Branded Quick Reference Cards for FREE, with no set-up fees or branding charges.
- Please allow 2-3 weeks for delivery



Braeburn® Products



Welcome! Braeburn is the value alternative for a wide variety of indoor and smart home control products. Founded in 2001, our corporate headquarters is located in Montgomery, Illinois – just west of Chicago. We are committed to providing you with the precision products you would expect from a world class company. Our manufacturing facility is ISO 9001 and QS9000 rated for the highest assurance of quality. Braeburn provides solutions to lower energy costs and increase comfort in any home or business environment.



BlueLink® Service Connect App



BlueLink Service Connect® is a free app that lets contractors send invitations to their existing BlueLink customers, requesting temporary or permanent access to their account. Once access is granted, contractors can view, modify and manage the approved thermostats remotely, without the need for a costly service call.



**We support the
Energy Aware
Program**

www.getenergyaware.com

**Toll-Free 866.268.5599 (U.S.) +1.630.844.1968 (Outside the U.S.)
Fax 866.268.8897 • www.braeburnonline.com**