

# AprilAire<sup>®</sup>

## Ventilation

### SUBMITTAL SHEET

## Model 8144NC

Fresh Air Ventilator for  
Multi-Family Applications

Project: \_\_\_\_\_

Dealer: \_\_\_\_\_

Architect: \_\_\_\_\_

Engineer: \_\_\_\_\_

Contractor: \_\_\_\_\_

Location: \_\_\_\_\_

Suppliers: \_\_\_\_\_

Date: \_\_\_\_\_

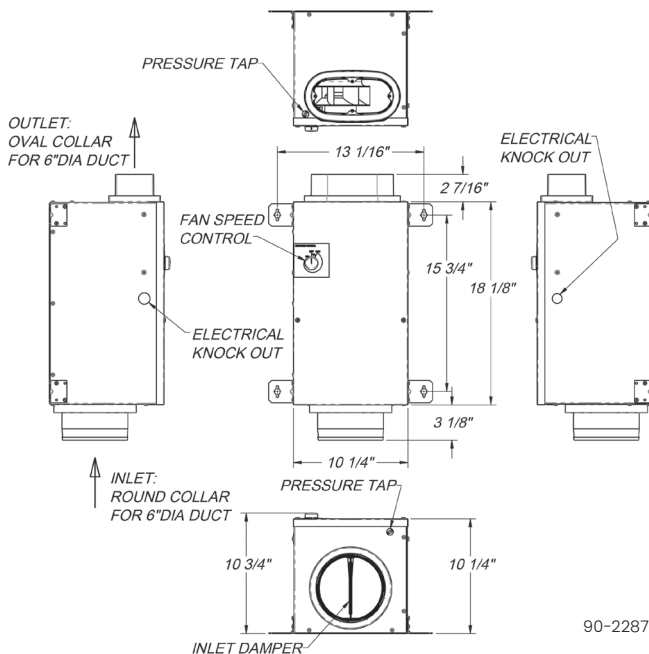


### GENERAL DESCRIPTION

- Model 8144NC improves indoor air quality by bringing the precise amount of outdoor air into the dwelling and complies with ASHRAE Standard 62.2.
- Motor 49 watts; 0.5 amps (FLA) @ 115v/LPH/60Hz
- Integrated powered damper
- Unit is hardwired
- 24-volt wiring to HVAC system. Furnace or air handler does not require an ECM motor to meet efficacy requirement
- Removable, washable filter
- For indoor use only; Installation temperature up to 160°F
- Duct collars accept 6" duct
- Housing 22 gauge G60 sheet metal
- ETL listed
- Can be controlled with AprilAire Model 8120X or 8120A Ventilation Control, AprilAire Wi-Fi thermostats, 8620 and 8910 (all sold separately)
- Designed and assembled in the USA utilizing US and global components

### When properly installed and set, it will meet the following mechanical ventilation requirements:

- International Residential Code (IRC)
- International Energy Conservation Code (IECC)
- International Mechanical Code (IMC)
- California Energy Commission Title 24



### MAXIMUM AIR FLOW

External Static Pressure** ("w.c.)	Airflow (CFM)	Efficacy (CFM/watt)
0.0	145 CFM	5.60
0.1	130 CFM	5.30
0.2	110 CFM	4.70
0.3	100 CFM	4.10

\*\* Measured across ventilator.

The submittal is intended to show general, overall product dimensions and provide guidance for installation clearance. Drawings are not to scale. Ensure submittals are current. AprilAire reserves the right to make product changes without notification or obligation.